

Your Futaba R7208SB/R7308SB programming can be updated easily online. When functions are improved, the update file can be downloaded from our website.

For more information, check out web site for FAQ regarding updating this product.

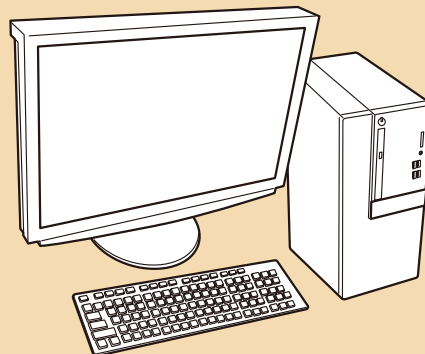
*The display screen is an example. The screen depends on the PC.

When using CIU-3 : Required for update

CIU-3
*CIU-2 cannot be used.



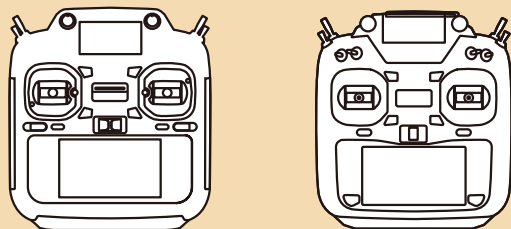
A red and black extension cable with a Futaba connector on one end and a standard connector on the other.
**CGY750/GY701/GY520
Extensions**



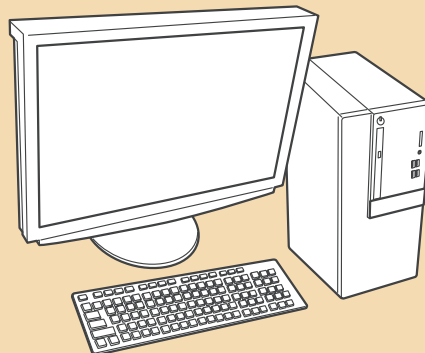
PC
(Access is possible by the web)

When using T26SZ or T16IZS(V4.0~) , T16IZ(V6.0~): Required for update

A small, dark-colored microSD card.
microSD



**T26SZ or
T16IZS(V4.0~), T16IZ(V6.0~)**



PC
(Access is possible by the web)

A red and black extension cable with a Futaba connector on one end and a standard connector on the other.
**CGY750/GY701/GY520
Extensions**

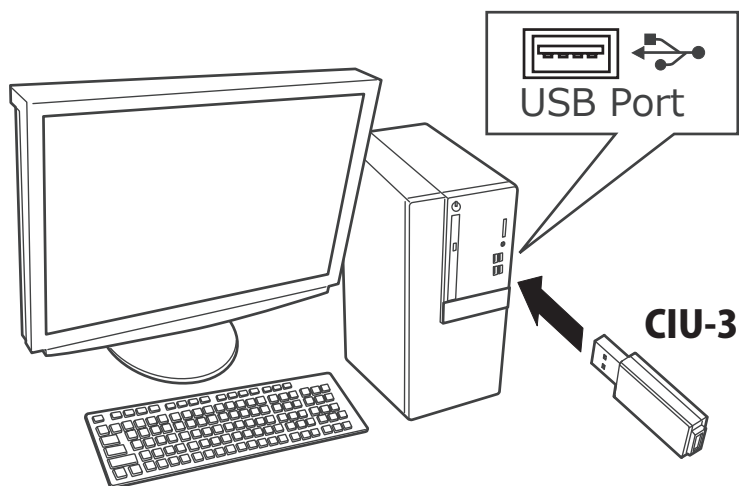
Battery for receiver



When using CIU-3 : Update Procedure

Preparations

1. Install the driver for the CIU-3 onto your PC.



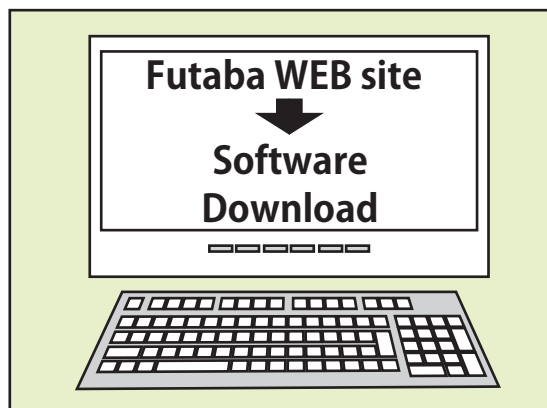
- ◆ When the **CIU-3** is first connected to the PC, once the CIU-3 is connected to the PC, download the recommended driver software Using Windows Vista, the "Found New Hardware Wizard" window appears on the screen. Click "Locate and install driver software".
- ◆ Refer to the manual of the CIU-3 for further information.

Updating procedure

1. Download the zip file of the update data from our website or your local distributor's website.

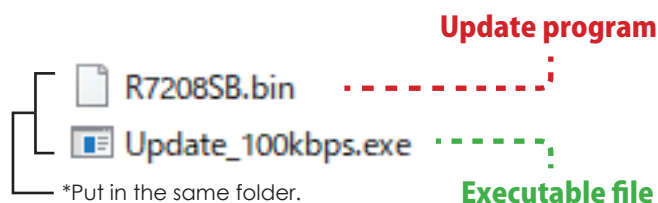
<https://www.rc.futaba.co.jp/>

<https://futabausa.com>

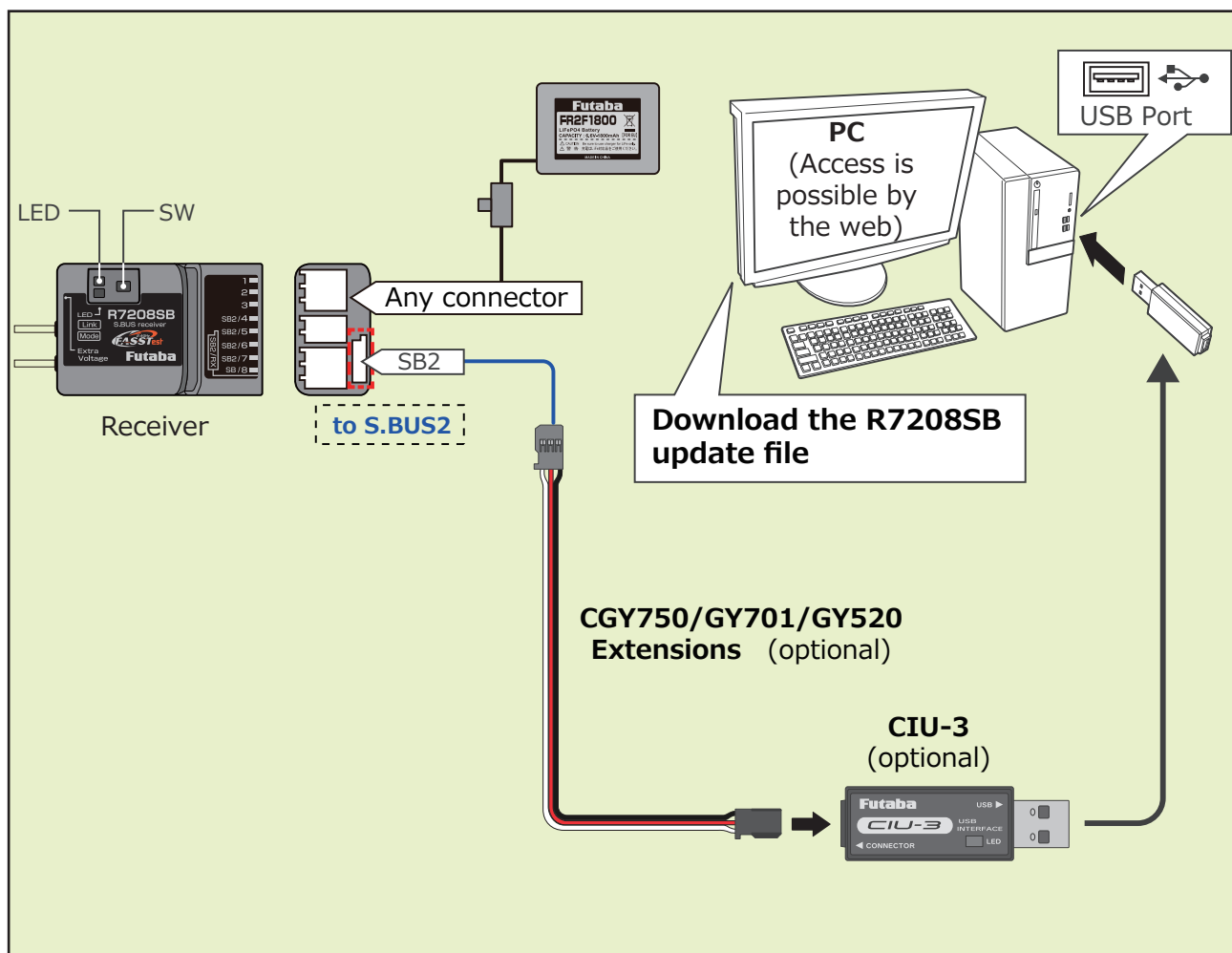


2. Extract the zip file on your computer.

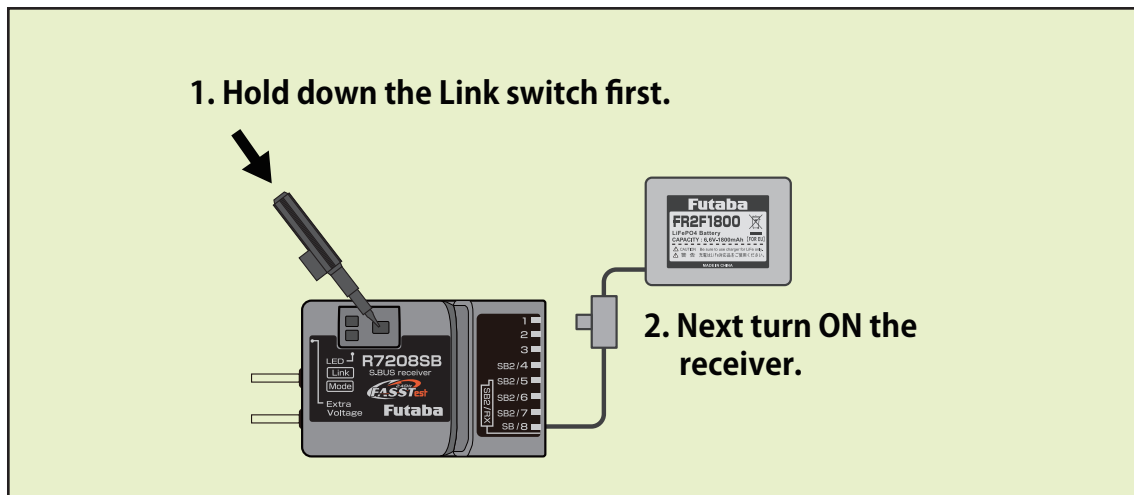
*The software of R7208SB and R7308SB is common.



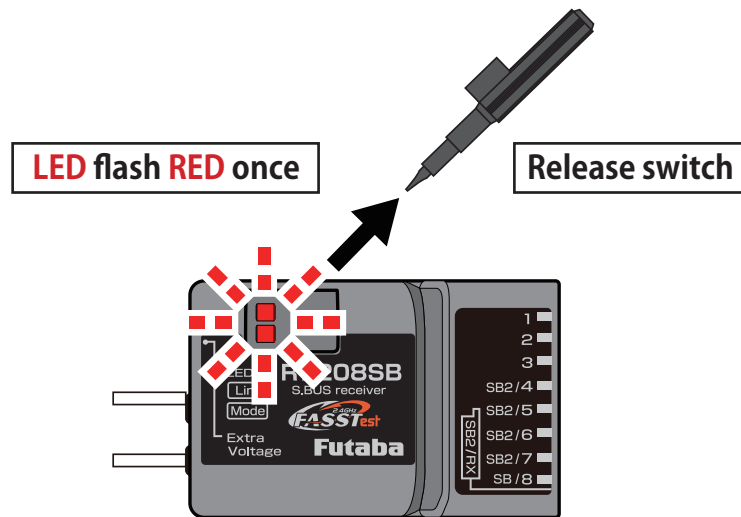
3. Connect as shown in the figure.



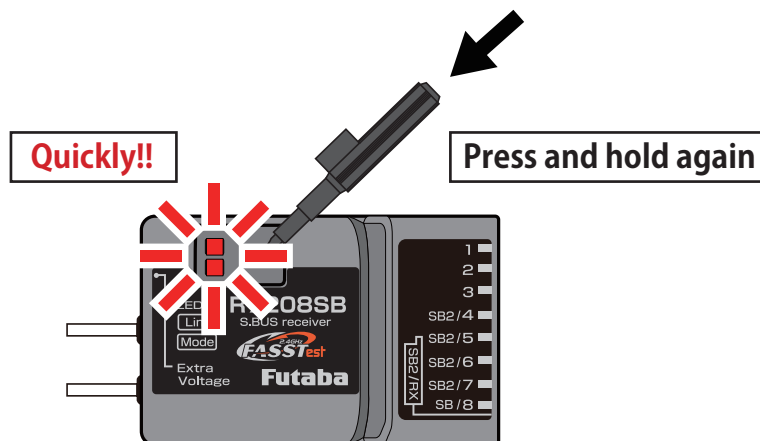
4. Turn on the receiver power while pressing down the switch.



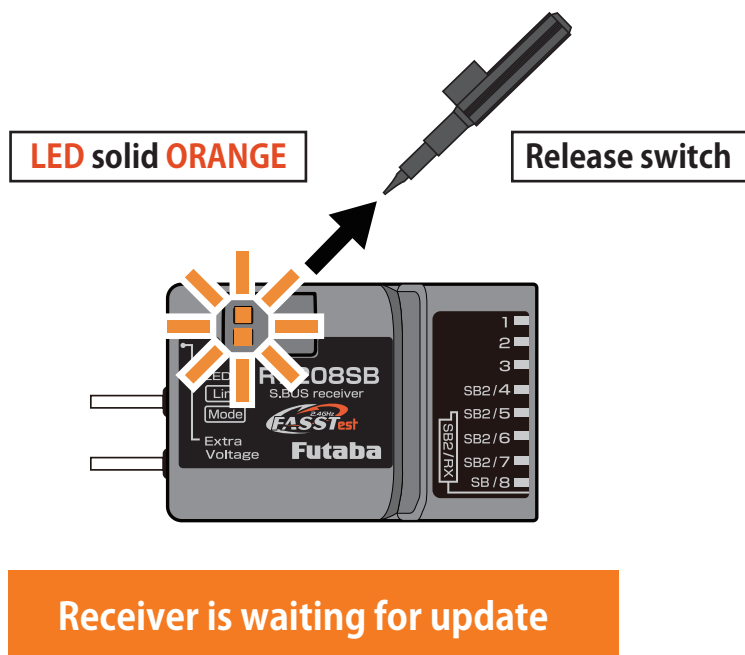
5. LED flash red once, release the switch.



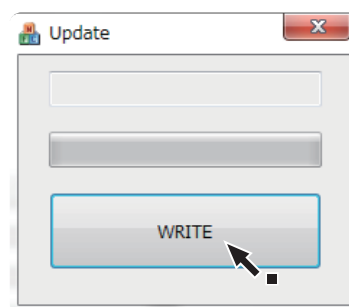
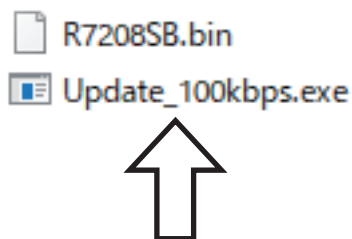
6. Press the switch again.



7. Release the switch when the solid orange.

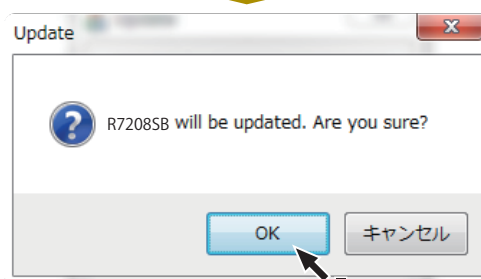


8. Execute the update file copied to the PC.



Write

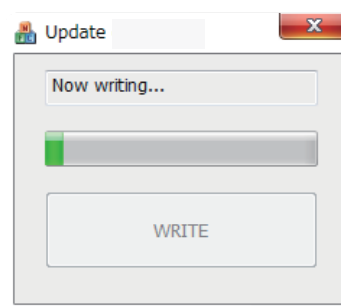
9. Operate the PC update. (The receiver should keep orange on.)



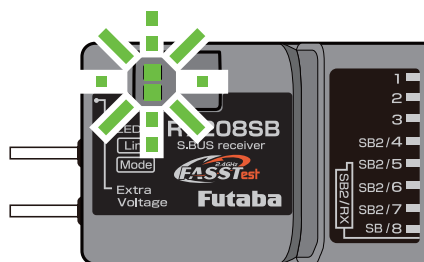
OK

Wait

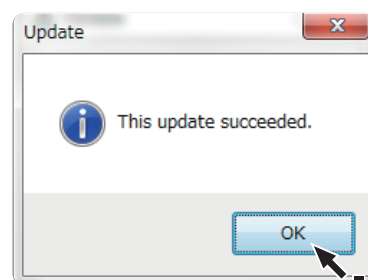
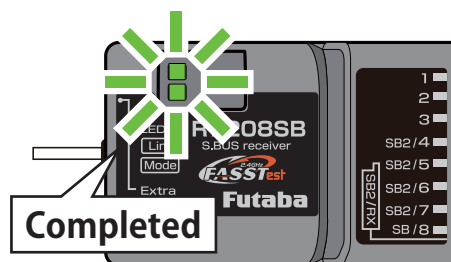
Don't turn off the power !



Flickers **GREEN** during update



LED solid **GREEN**



10. The **GREEN LED** on the R7208SB/R7308SB lights up when the update is complete. A completion message box will appear on your PC. Click OK.

11. Turn off the power switch of your R7208SB/R7308SB and remove the CIU-3.

12. Be sure to check the each function before use.

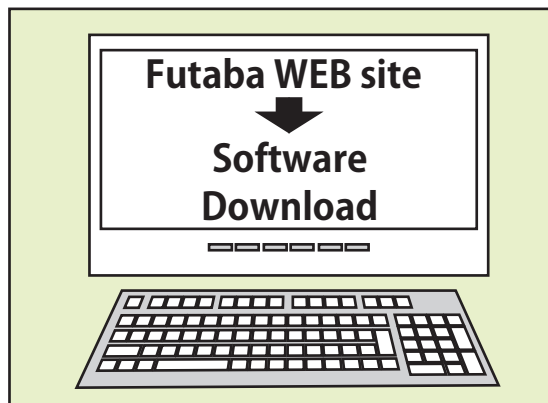
When using T26SZ or T16IZS(V4.0~) , T16IZ(V6.0~) : Update Procedure

Preparations

1. Download the zip file of the R7208SB update data from our website or your local distributor's website.

<https://www.rc.futaba.co.jp/>

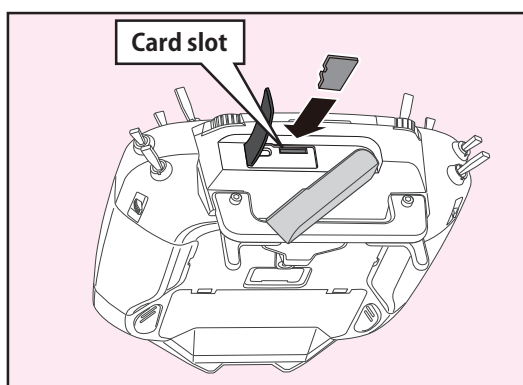
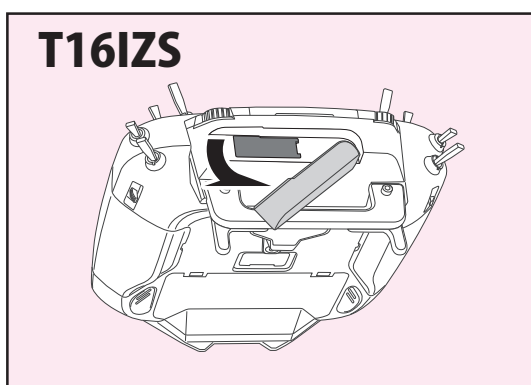
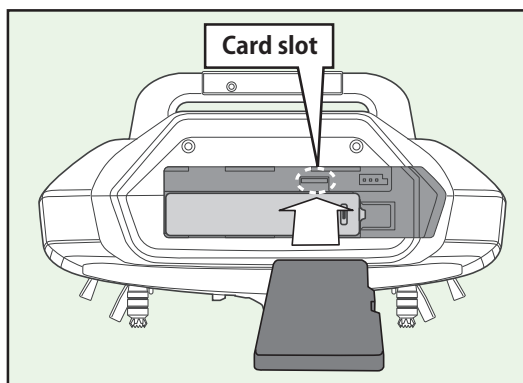
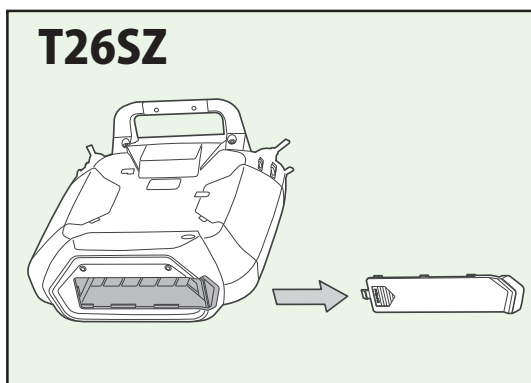
<https://futabausa.com>



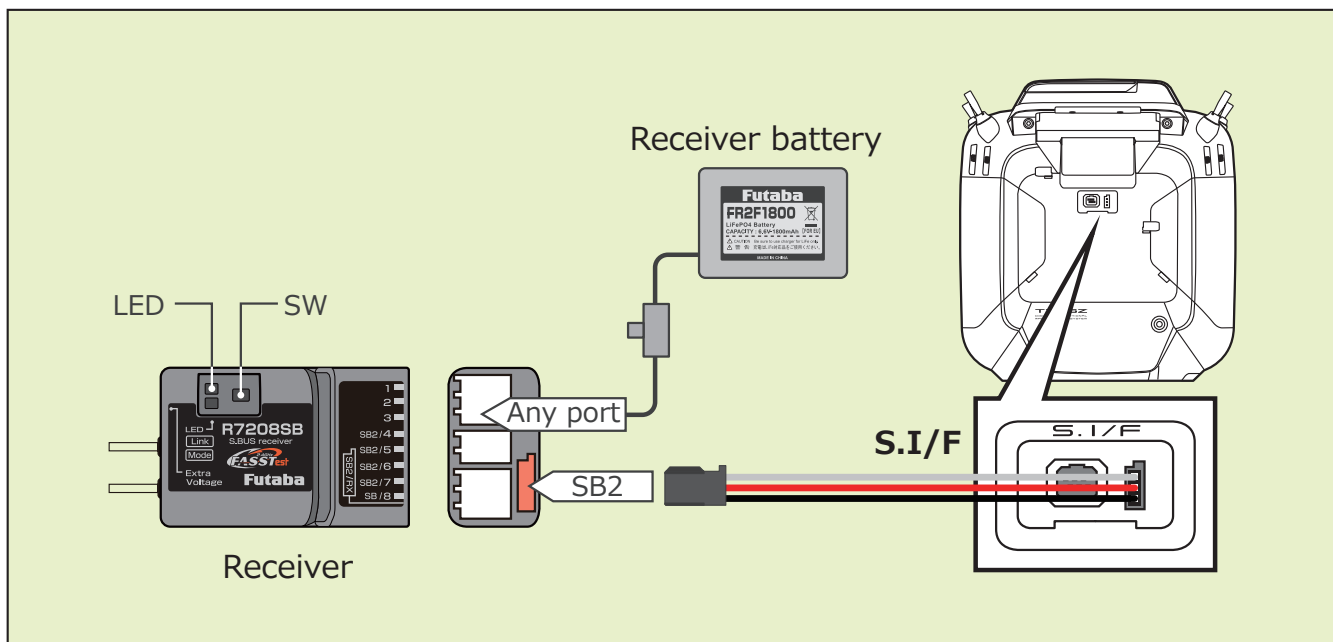
2. Extract the zip file on your computer.

3. Copy the "FUTABA" folder into your microSD card.

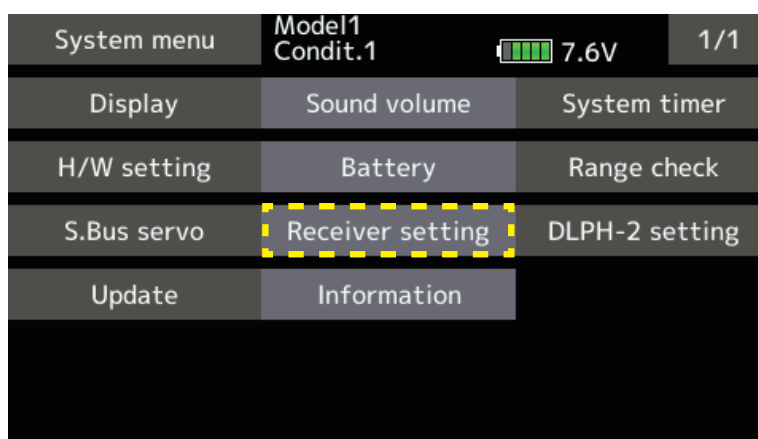
4. Insert the microSD card with "FUTABA" folder that contained the update software into the SD card slot on your transmitter.



5. Connect the receiver to be updated to the S.I/F connector of the transmitter.

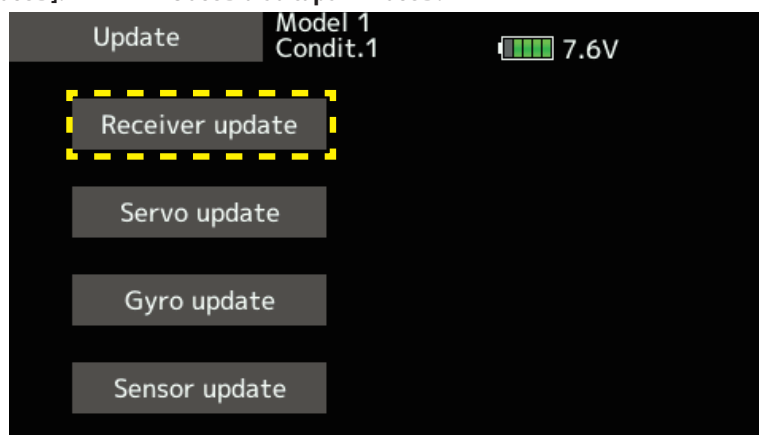


6. Turn on the transmitter and call "System Menu" ⇒ "Update".

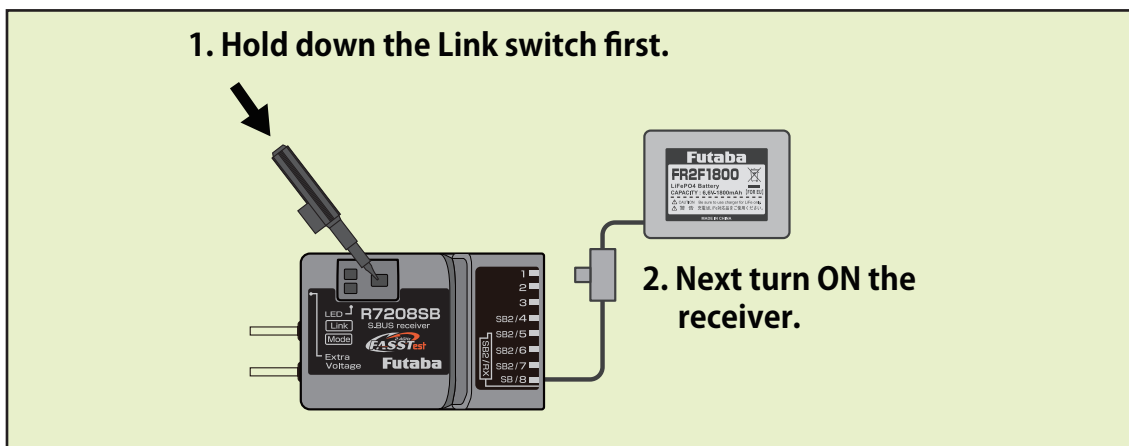


*The display screen will vary depending on the transmitter.

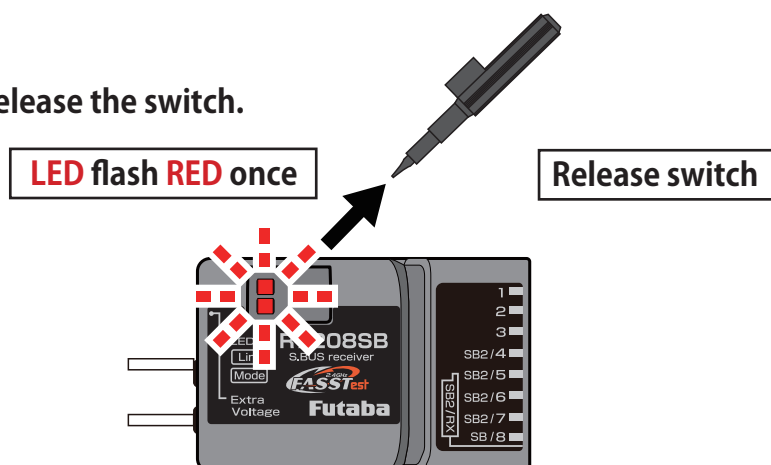
7. Tap [Receiver Update] → [R7208SB]. *R7308SB also taps R7208SB.



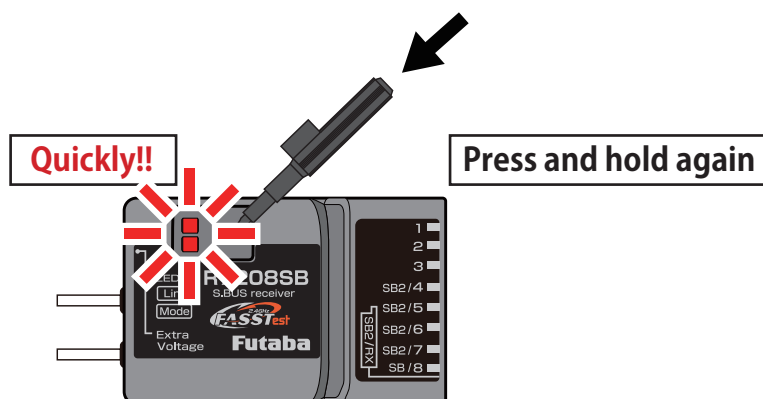
8. Turn on the receiver power while pressing down the switch.



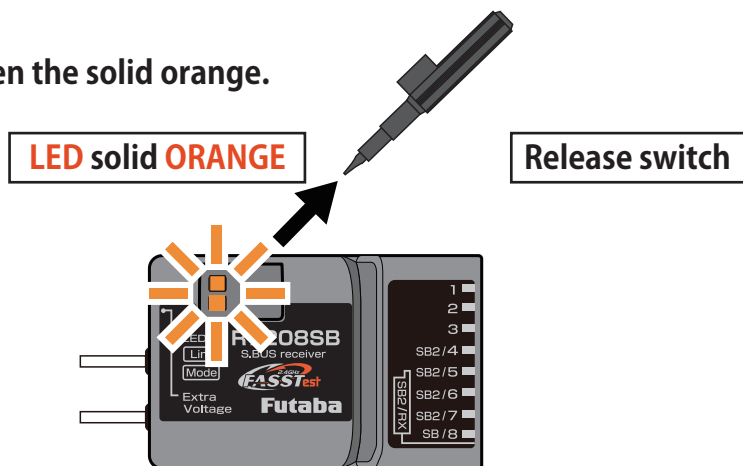
9. LED flash red once, release the switch.



10. Press the switch again.



11. Release the switch when the solid orange.

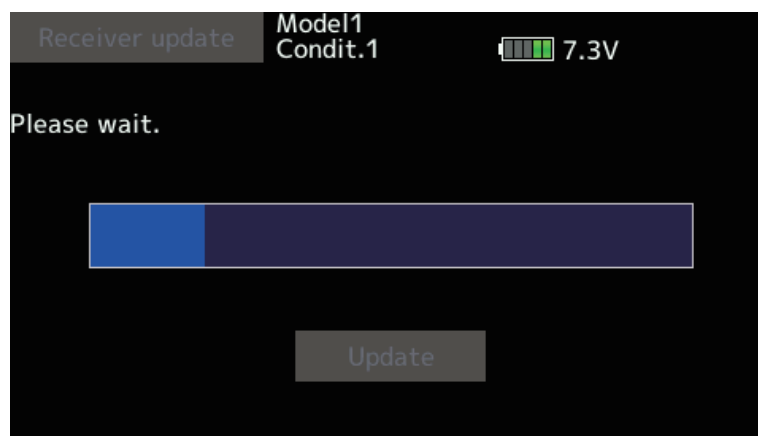


Receiver is waiting for update

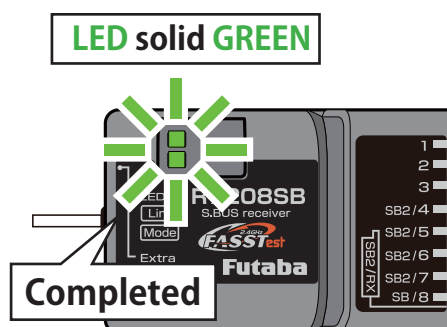
12. Tap [Update].



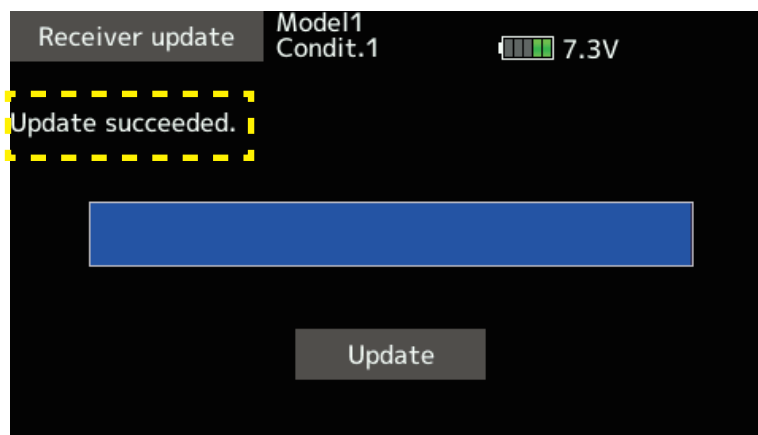
13. Update start.



14. The GREEN LED on the R7208SB/R7308SB lights up when the update is complete.



15. When finished, the following will appear.



16. Check the version by tapping [System Menu] → [R7208SB] → [Load].

17. Disconnect the DLPH-2 from the transmitter's S.I/F connector.

V2.2 UPDATE

- The software processing from receiver startup to servo signal output has been revised.
Fixed the rare phenomenon that some S.BUS devices (including those not manufactured by Futaba) would fail to start up after being turned on.

V2.1 UPDATE

- Link processing has been improved.
- Processing has been improved when connecting the sub RX/DLPH-1/DLPH-2/FDLS-1 in dual RX link mode.

V2.0 UPDATE

- Compatible with FASSTest26CH.
- Expanded CH mode (MODE H, I, J).

R7208SB/R7308SB CH Mode table

Output connector	Channel									
	Mode A	Mode B	Mode C	Mode D	Mode E	Mode F	Mode G	Mode H	Mode I	Mode J
1	1	1	1	1	9	9	9	17	17	17
2	2	2	2	2	10	10	10	18	18	18
3	3	3	3	3	11	11	11	19	19	19
SB2 / 4	4	4	4	S.BUS2	12	12	12	20	20	20
SB2 / 5	5	5	5	S.BUS2	13	13	13	21	21	21
SB2 / 6	6	6	6	S.BUS2	14	14	14	22	22	22
SB2 / 7	7	7	S.BUS2	S.BUS2	15	15	S.BUS2	23	23	S.BUS2
SB / 8	8	S.BUS	S.BUS	S.BUS	16	S.BUS	S.BUS	24	S.BUS	S.BUS
LED blink	RED 1	RED 2	RED 3	RED 4	RED 5	GREEN 1	GREEN 2	GREEN 3	GREEN 4	GREEN 5

- Fixed a problem when connecting with DLPH-1/DLPH-2/FDLS-1 in dual RX link mode.
- Supports receiver settings from transmitter.

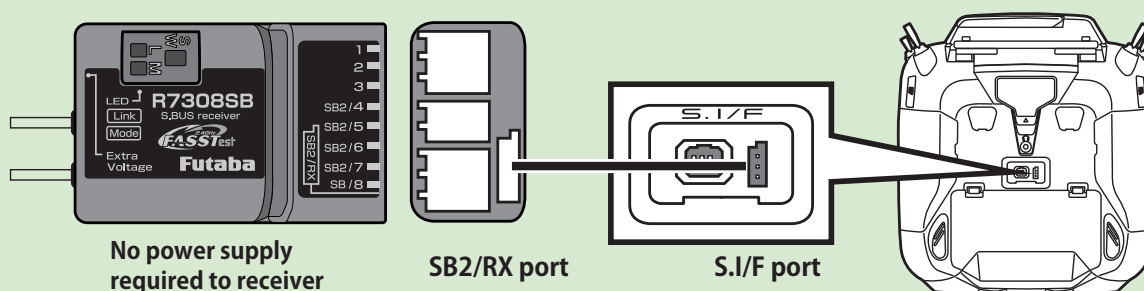
*When using FASSTest26CH, be sure to update the receiver to V2.0.

*T16IZ, T16IZS cannot operate after 17ch.

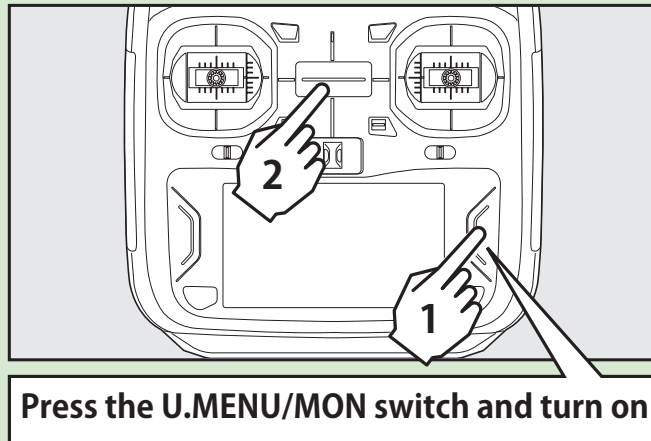
Can check the version by connecting the receiver to T26SZ, T16IZ(V6.0~), T16IZS(V4.0~), T32MZ-WC, T32MZ(V3.9~)
If the receiver version is ~V1.3, the version cannot be confirmed. In that case, upgrade to V2.0.

How to check the Rx version using T16IZ(V6.0~), T16IZS(V4.0~)

① Connect the **S.BUS2 port** of the receiver and the **S.I/F port** of the transmitter with a cable.

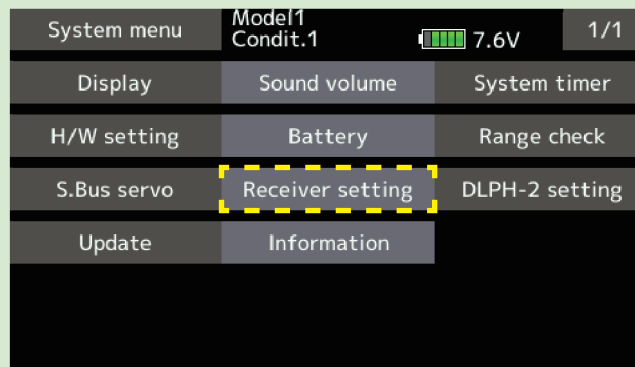


- ② Turn on the power switch while pressing the **U.MENU/MON** button on the transmitter.

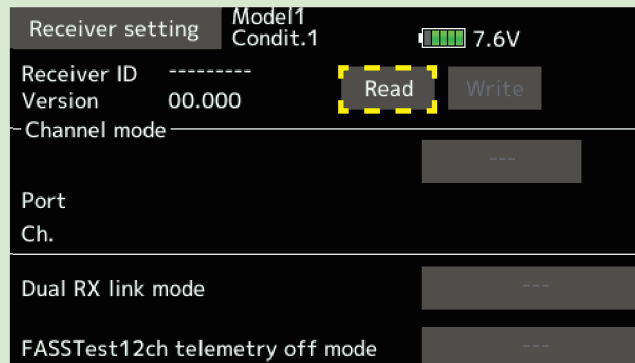


*For safety reasons, receiver settings cannot be made while radio waves are being transmitted.

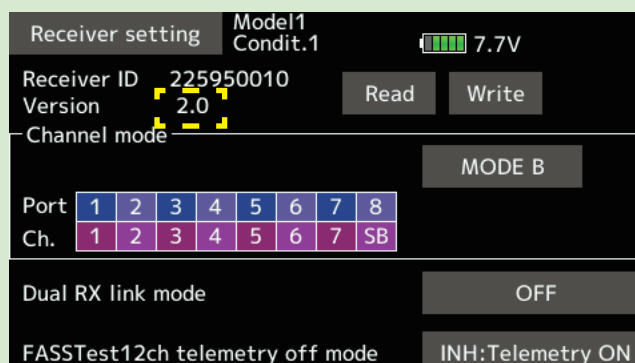
- ③ Tap **[Receiver setting]** on the **System menu**.



- ④ Tap **[Read]**.



- ⑤ The version of the connected receiver will be displayed.

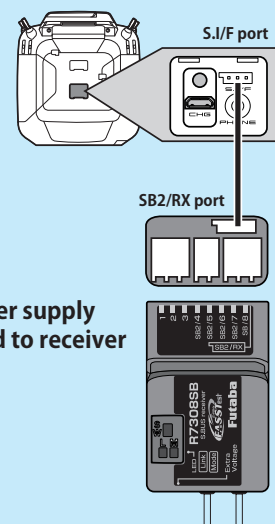


How to check the Rx version using T32MZ-WC, T32MZ(V3.9~)

1. Turn on the power switch while pressing the **U.MENU/MON** button on the transmitter.
2. "No" tap.

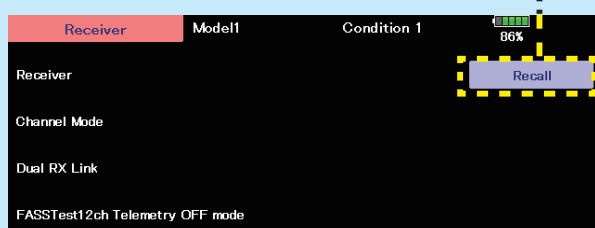


*For safety reasons, receiver settings cannot be made while radio waves are being transmitted.



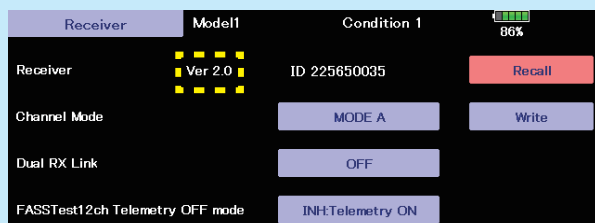
3. Connect receiver to the transmitter as shown in the diagram on the right.

4. Tap **Recall**



Tap Recall within 10 seconds after connecting the receiver.
If 10 seconds pass, an error will occur, so please try again.

5. The version of the connected receiver will be displayed.



V1.3 UPDATE

- Fixed the bug that F/S does not work when receiving error when FASSTest12ch telemetry OFF mode is used.
- Fixed a bug that the RPM display of the telemetry RPM sensor (SBS-01RM/RO/RB) did not become 0.
- Fixed the malfunction of the battery fail-safe setting CH when the battery fail-safe state occurred when using R9001SB and dual RX link mode.
- Fixed the operation response when using dual RX link mode with R9001SB in FASSTest12ch mode.

V1.1 UPDATE

- Fixed an issue where some transmitters could not be linked.

Back of receiver



Receivers whose serial number is 2351 or earlier are eligible. Receivers from 2352 onwards do not need to be updated.