

The instruction of GY701/CGY750V2.0 Data copy tool

1. The feature of GY701/CGY750V2.0 data copy tool

- Setting data of the GY701 or CGY750V2.0 can be stored to PC.
- Setting data that are stored to the PC can be transferred to GY701 or CGY750V2.0.

Caution: Data copy tool can work with later firmware version of the GY701 and CGY750V2.0 as listed below. Please update the GY701 and CGY750V2.0 prior to use this tool.

GY701 Ver: 1.10 or later

CGY750 Ver.2.00 or later

(Please use the previous version for Ver.1.20 - 1.40.

For instead of At CGY750 Ver.2.0 and later, the previous version can not work correctly.)

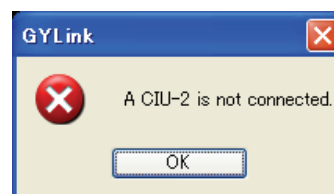
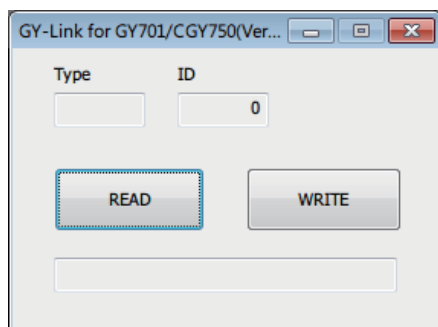
2. Connection

- 1). Connect the CIU-2 to USB connector of the PC and other end to S.BUS input terminal of GY701/CGY750V2.0.
- 2). Supply the power to GY701/CGY750V2.0.

- * PC drivers of the CIU-2 must be installed to the PC prior to the operation.
- * Decompress the download file of the GYLink software.

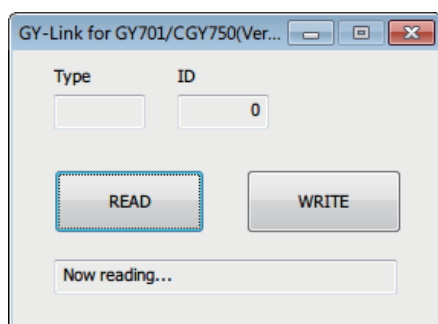
3. Direction of storing the setting data of the GY701/CGY750V2.0 to PC.

- 1). Run the GYLink.exe of downloaded software.
- 2). Dialogue box will appear when the GYLink start properly as below. The error message will appear when the PC can not recognize the CIU-2 as right below. In this case, check the CIU-2 is connected properly or the PC driver software are installed properly.

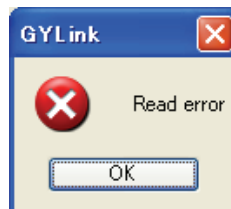
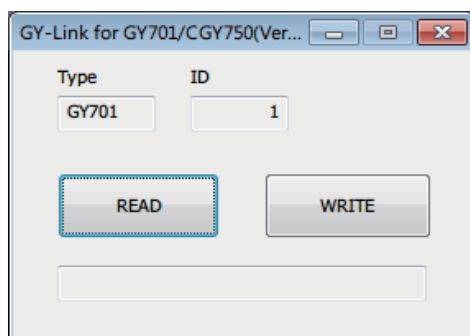


- 3). Push the [READ] button on the box. PC will ask you the destination folder and file name it is to be stored.

- 4). Put the file name to the desire folder of your PC and push the [Save] button. The box shows [Now reading...].

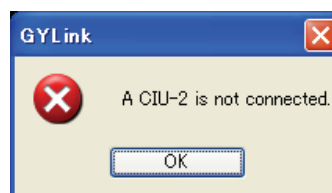
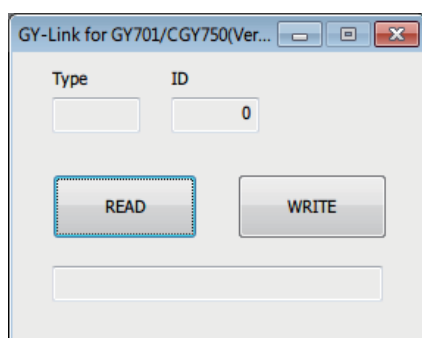


5). Once the reading process is complete, the box shows model type and ID number. When you have Read error message or box does not show the ID number, make sure the wire connection and power supply and retry the reading process again.



4. Direction of transferred the setting data on the PC to GY701/CGY750V2.0.

- 1). Run the GYLink.exe of downloaded software.
- 2). Dialogue box will appear when the GYLink start properly as shown below. The error message will appear when the PC can not recognize the CIU-2 as right below. In this case, check the CIU-2 is connected properly or the PC driver software are installed properly.



3). Push the [WRITE] button on the box. PC will ask you the destination folder and file name it is to be transferred.

4). Select the file name and push [Open] button on the box. The box shows [Now writing]. When the transferred is completed, [The writing succeeded] is showed. In case of writing error message is appeared, try the writing process again.

