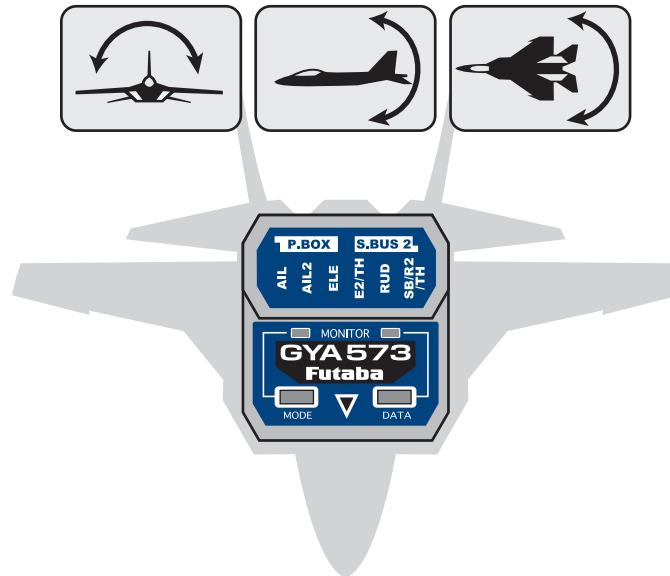


# **GYA573**

## **6-Axis Flight Control**



## **Software Update Functions**

## When using CIU-2/3 : Required for update

### ***GYRO UPDATE (Update mode of GYA573)***

This menu is used to adjust the update mode of the GYA573. The mode selected will be determined by the model of the CIU selected and personal preference. For example, when using the CIU-3, the user may select either the high speed or the slow speed modes. If using the CIU-2, only the slow speed mode is available.

\* The following optional products are required for the update.

- CIU-2 or CIU-3
- DSC cable for update
- Receiver battery

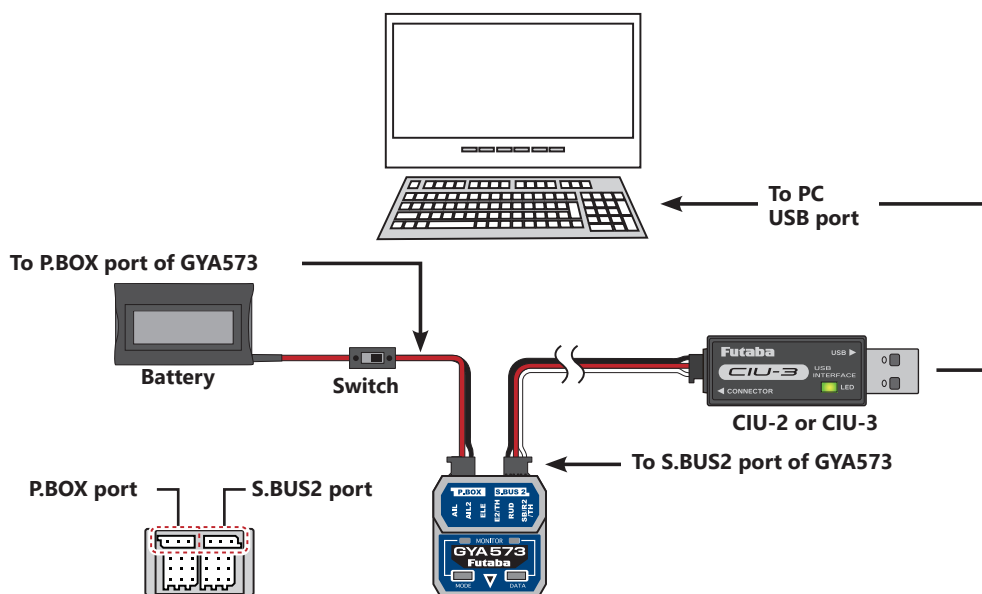
#### ***(1) Download GYA573 update file***

Download the GYA573 update file from our website or your local distributor's website.

### **Connection diagram**

**To the open/available slot of GYA573**

**A PC that can connect to the Internet and has CIU-2 or CIU-3 driver software installed.**




#### ***(2) Preparation for update -1***


Connect the GYA573, GPB-1, CIU-2 or CIU-3 to the PC with reference to the above connection diagram.

## PC side

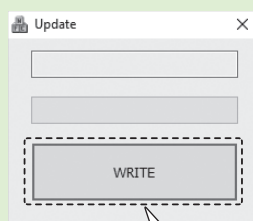
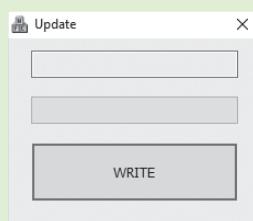
### PC

Start an executable file by a PC.

Use CIU-2  Updater(Lowspeed).exe

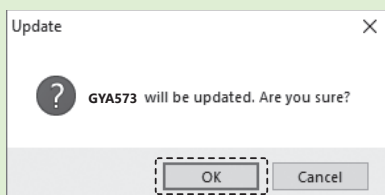
Use CIU-3  Updater(Highspeed).exe

Double-click



Click [WRITE]

WRITE

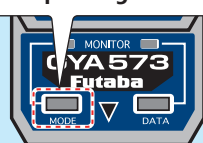


Click [OK]

OK

## GYA573 side

Turn on the power of GYA573 while pressing MODE SW



Mode LED lights Red

Press and hold MODE SW for about 4 seconds.

Mode LED lights Violet  
Data LED lights Red



When using CIU-2, release MODE SW. To use CIU-3, press and hold MODE SW.

Mode LED lights Violet  
Data LED lights Green



Release the MODE SW.

### (3) Selection of CIU (Speed)

Before turning on the power of **GYA573**, select the writing speed suitable for **CIU-2** or **CIU-3** to be used for updating.

#### [Selection method]

#### CIU-2

Turn on the power while pressing the **MODE SW** of **GYA573**. The **Mode LED** lights **Red** at first, then about 4 seconds later, Lights **Violet**, and when the **Data LED** turns **Red**, release the **MODE SW**.

#### CIU-3

Turn on the power while pressing the **MODE SW** of **GYA573**. The **Mode LED** lights **Red** at first, then Lights **Violet** after about 4 seconds; press and hold **MODE SW** for another 4 seconds when the **Data LED** turns **Red**, and release **MODE SW** when the **Data LED** turns **Green**.

#### [LED display after setting]

CIU	Mode LED	Data LED
<b>CIU-2</b> Low speed	Lights <b>Violet</b>	Lights <b>Red</b>
<b>CIU-3</b> High speed		Lights <b>Green</b>

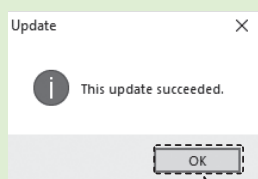
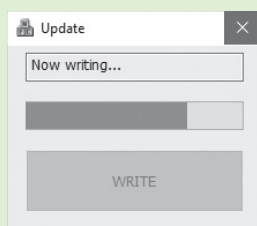
### (4) Perform update

Click on the update file downloaded to the PC to update the GYA573.

#### ⚠ CAUTION

⊘ Do not turn off the power or remove the battery while updating. GYA573 may be damaged.

## PC side



Click [OK]

## GYA573 side

Update complete (CIU-2)

Mode LED lights **Blue**  
Data LED lights **Red**



Update complete (CIU-3)

Mode LED lights **Blue**  
Data LED lights **Green**



### (5) Update complete

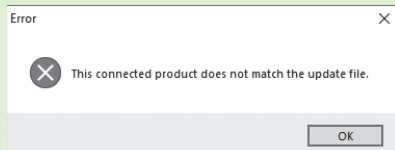
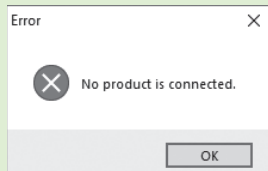
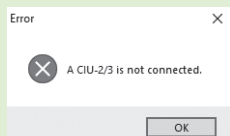
When the update is completed successfully, Mode LED will turn blue.

### [LED display when update is completed]

CIU	Mode LED	Data LED
CIU-2 Low speed	Lights <b>Blue</b>	Lights <b>Red</b>
CIU-3 High speed		Lights <b>Green</b>

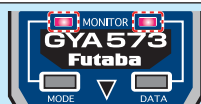
### Error

If this happens, it will be up from the beginning.  
Please try the update again. A place to fail again  
If so, re-download the update file please.



Update failed (CIU-2)

Mode LED lights **Red**  
Data LED lights **Red**



Update failed (CIU-3)

Mode LED lights **Red**  
Data LED lights **Green**



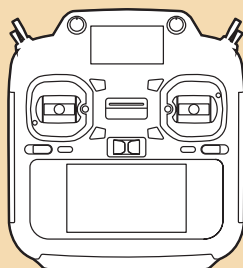
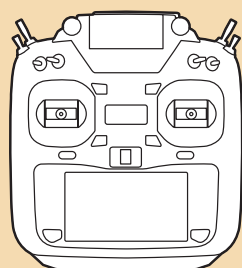
### [LED display when update fails]

CIU	Mode LED	Data LED
CIU-2 Low speed	Lights <b>Red</b>	Lights <b>Red</b>
CIU-3 High speed		Lights <b>Green</b>

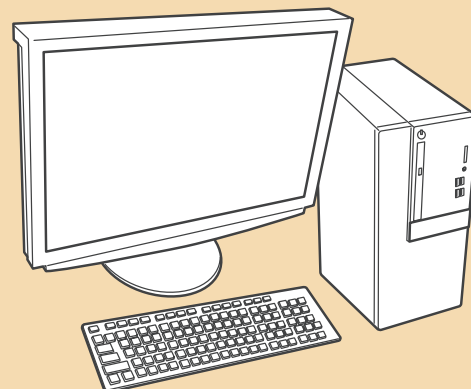
If the cable disconnects or a contact failure occurs during the update, the update stops halfway. In that case, please try updating again from the beginning.

## When using T26SZ / T16IZS / T16IZ: Required for update

### Required for update (Purchase separately)



T16IZ V4.0~      or      T26SZ V3.0~  
T16IZ SUPER V2.0~



**PC**  
(Access is possible by the web)



**CGY750/GY701/GY520  
Extensions**



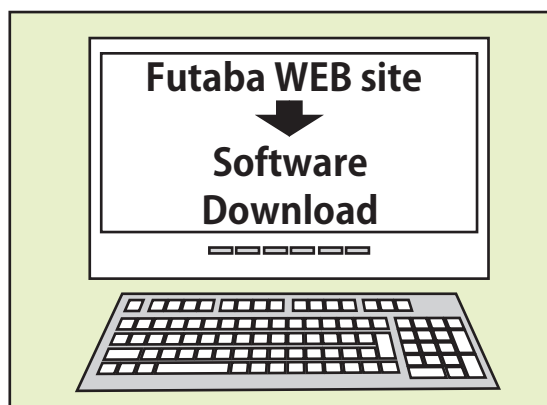
**microSD card**

### Updating procedure

1. Download the zip file of the update data from our website or your local distributor's website.

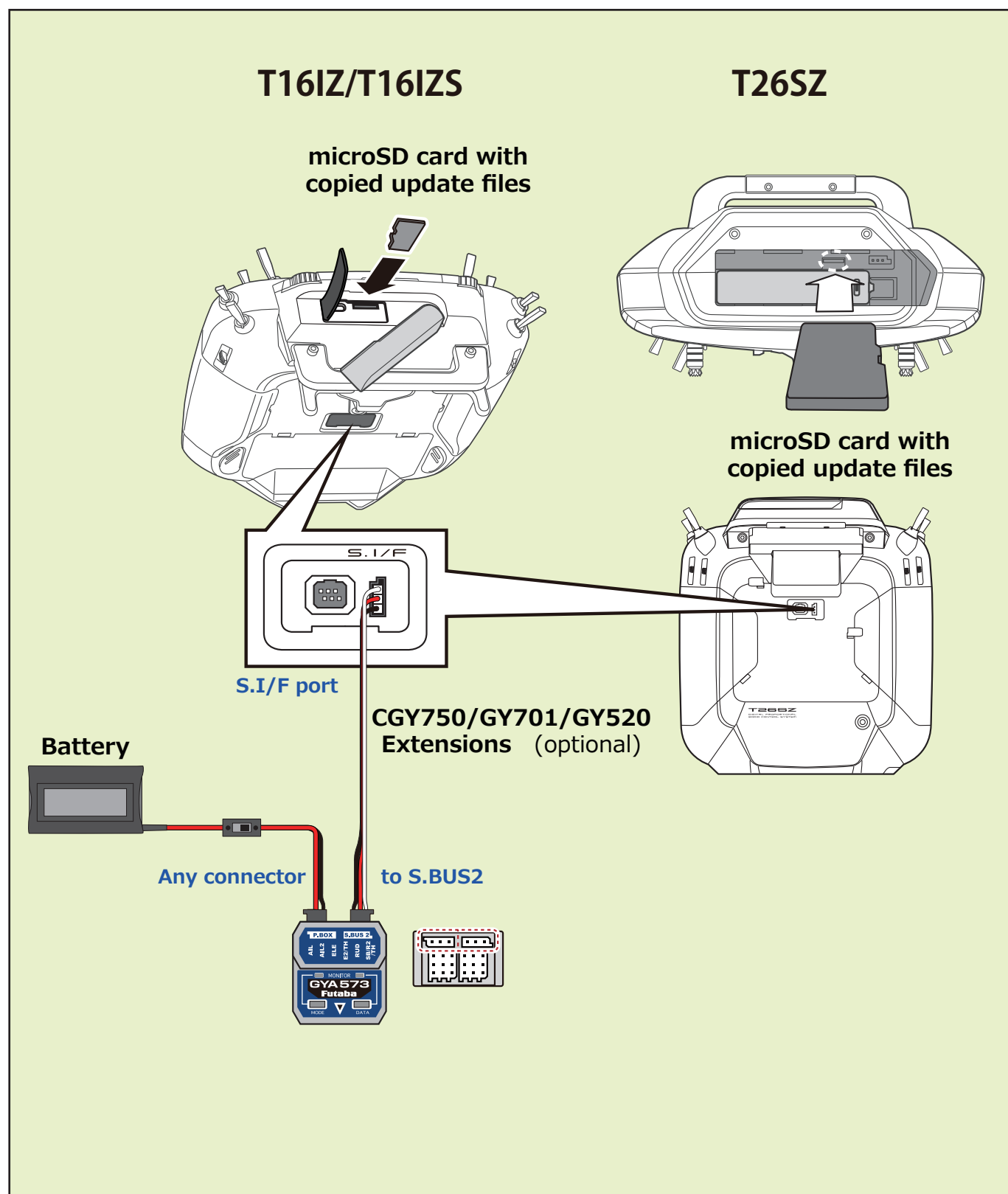
<http://www.rc.futaba.co.jp>

<https://futabausa.com>



2. Extract the zip file on your computer.
3. "FUTABA" folder will be created.
4. Copy the "FUTABA" folder to micro SD card.
5. Insert the microSD card with the update file copied into the transmitter.

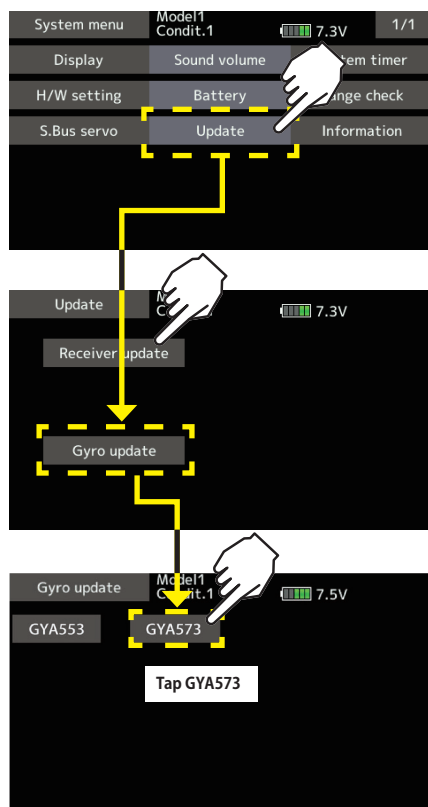
6. Connect as shown in the figure.



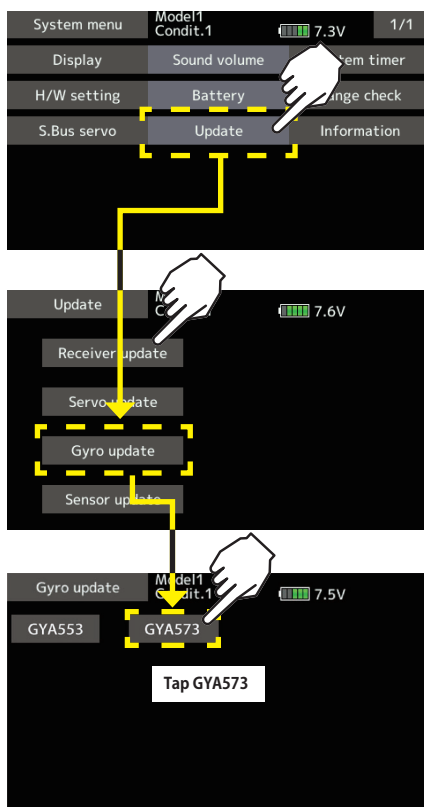
## 7. Transmitter menu : [System menu] ⇒ [Update] ⇒ [Gyro update] ⇒ [GYA573]

\*Update is not possible when CRSF is ON.

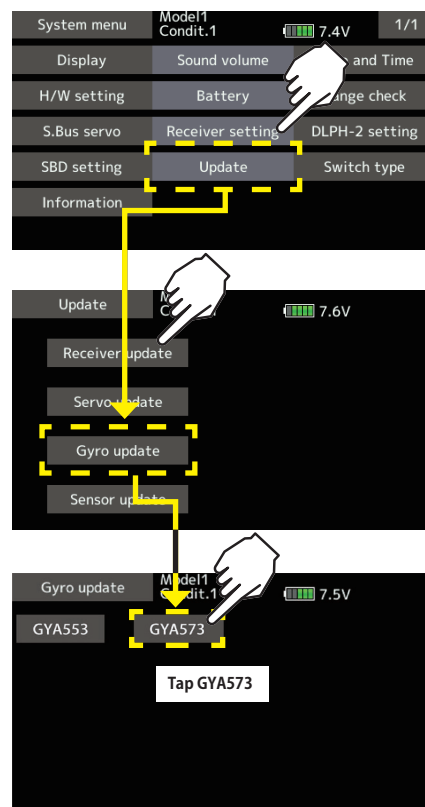
### T16IZ



### T16IZ SUPER

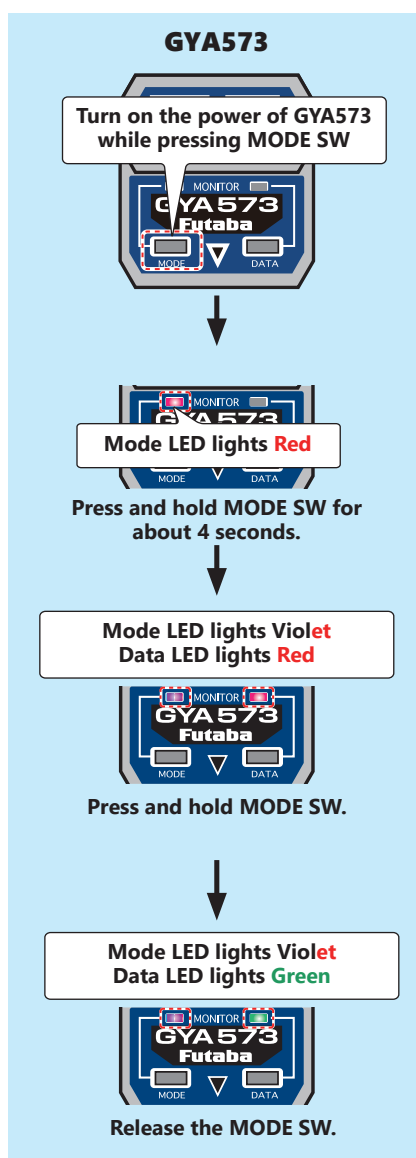


### T26SZ



8. Turn on the power of GYA573 while pressing MODE SW.

9. Put the GYA573 into update mode as shown.

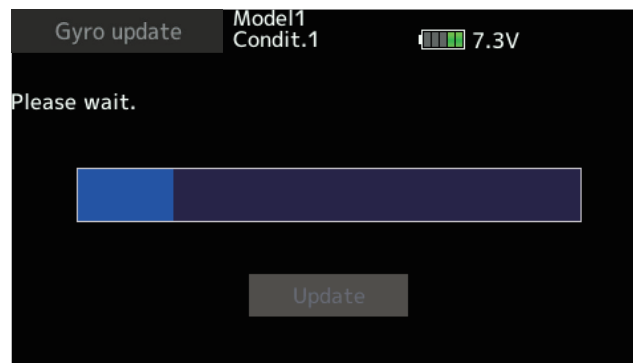


10. Tap [Update] on the transmitter.





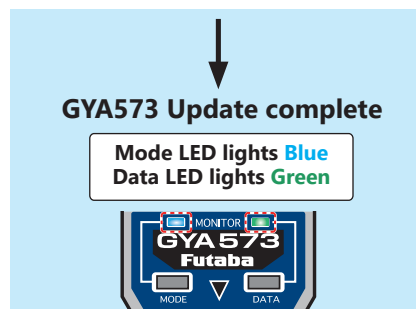
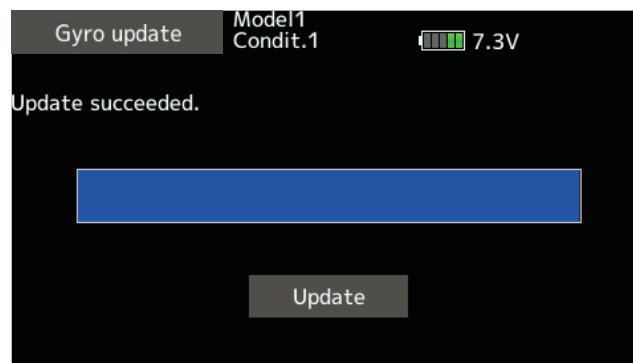
## 11. Update start.



### ⚠ CAUTION

⊗ Do not turn off the power or remove the battery while updating. GYA573 may be damaged.

## 12. When the update is completed, the following display will appear.



### Error

If this happens, it will be up from the beginning. Please try the update again. A place to fail again If so, re-download the update file please.

### Update failed

Mode LED lights Red  
Data LED lights Green



If the cable disconnects or a contact failure occurs during the update, the update stops halfway. In that case, please try updating again from the beginning.

## Ver 5.2

Fixed the operation when auto recovery mode is turned ON in ON/OFF CH of the roll flat function.