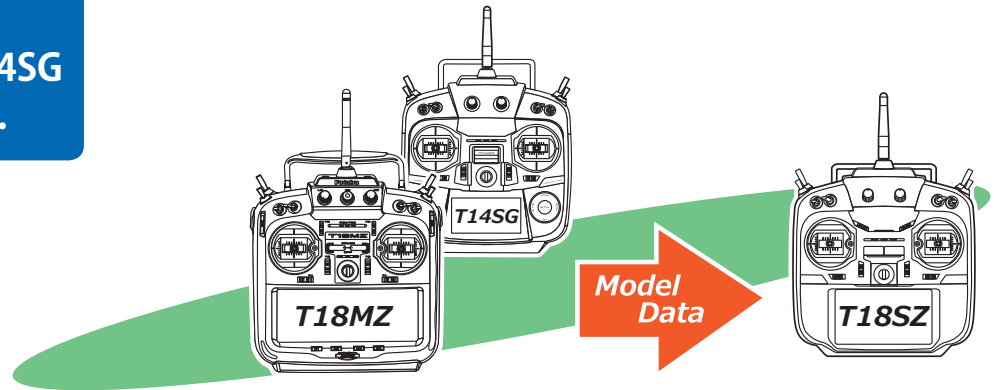


T18SZ Model Data Converter (from T18MZ/T14SG to T18SZ only)

Ver.2

Original data of T14SG could be used now.



The T18SZ Model Data Converter is a software that converts model data of T18MZ or T14SG to that for T18SZ. The software cannot convert model data that made by other transmitters such as T14MZ etc. Thus please still use the existing converter - Futaba Model Data Converter Ver.1.0.4, if you want to convert model data of T14MZ/FX-40/T12Z/T12FG/FX-30 on your T18SZ.

Prior to using the Model Data Converter software, please ensure that your transmitter is utilizing the latest update for the respective transmitter (T18SZ V1.7~). Also, be sure to select the desired conversion data in transmitter after it has been updated.

Important: Check the operation of the model prior to flight.

1. Preparation	P2
2. Select the Source of the Data	P3
3. Select the Intended Location for the Converted Data	P4
4. Detailed setting	P5
5. Data conversion	P7
6. Precautions and warnings	P8
7. Error Message	P11

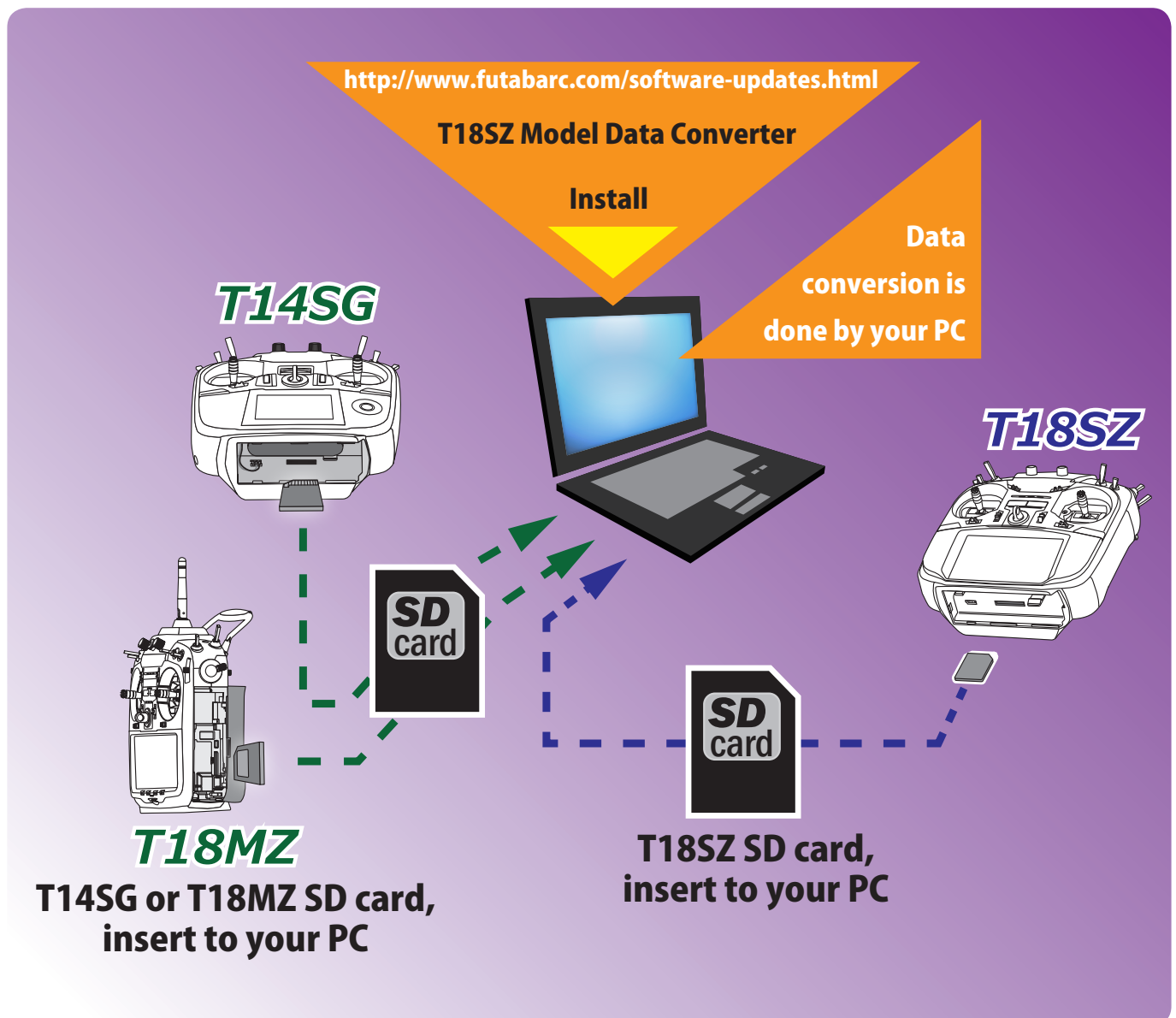
Distribution & exemption of liability

- Microsoft and Windows are registered trademark of Microsoft Corporation in the United States and other countries.
- Futaba Corporation shall not be responsible for any damage caused by use of this software without regard to legal foundation. Use this software based on agreement to this.
- The copyright of this software and document resides with Futaba Corporation. Redistribution without the approval of the copyright holder is prohibited.
- Reverse engineering and modification of this software is strictly prohibited.

T18SZ Model Data Converter

1. Preparation

- 1.1. Please make sure that a card reader is attached to a PC prior to inserting a memory card.
- 1.2. After ensuring that the memory card of the original transmitter contains the model to be converted, place the memory card in the card reader which is attached to your PC. You can utilize the same memory card to save the data.
- 1.3. Please run the Model Data Converter. To do so, click the Model Data Converter executable.

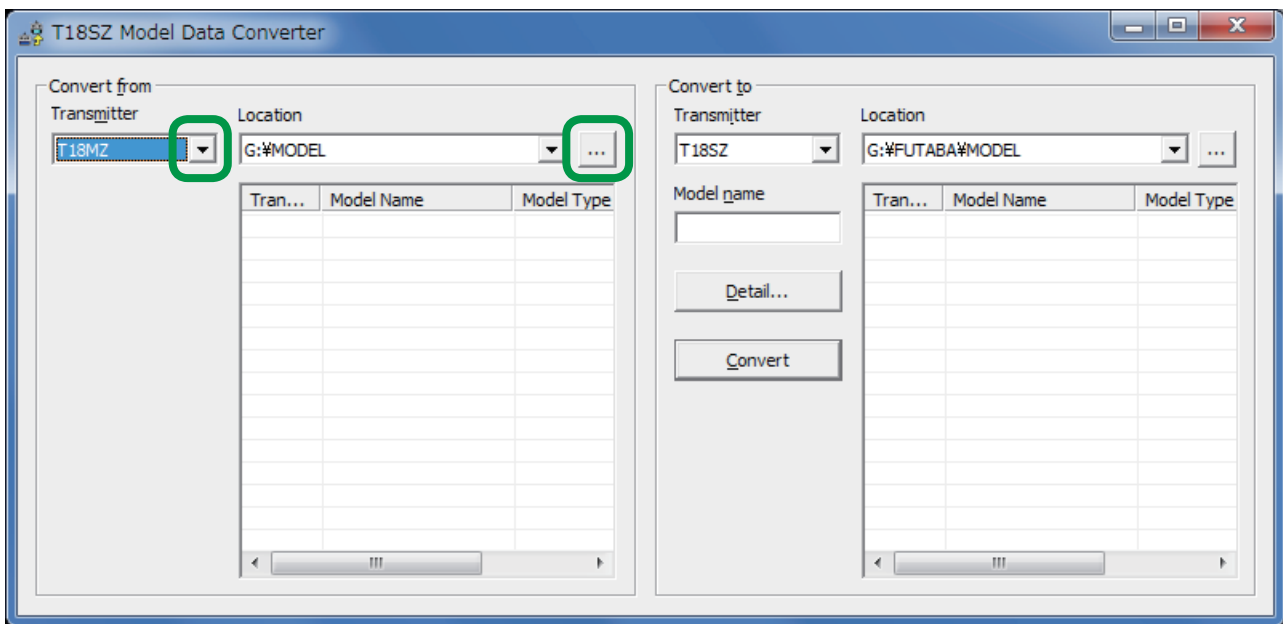


T18SZ Model Data Converter

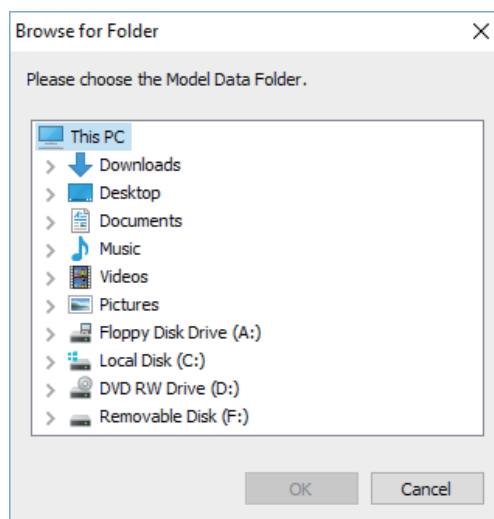
2. Select the Source of the Data

2.1. Click the " ▼ " button in the "Convert from" group box, select the transmitter T18MZ or T14SG.

2.2. Click the "... " button in the "Convert from" group box.

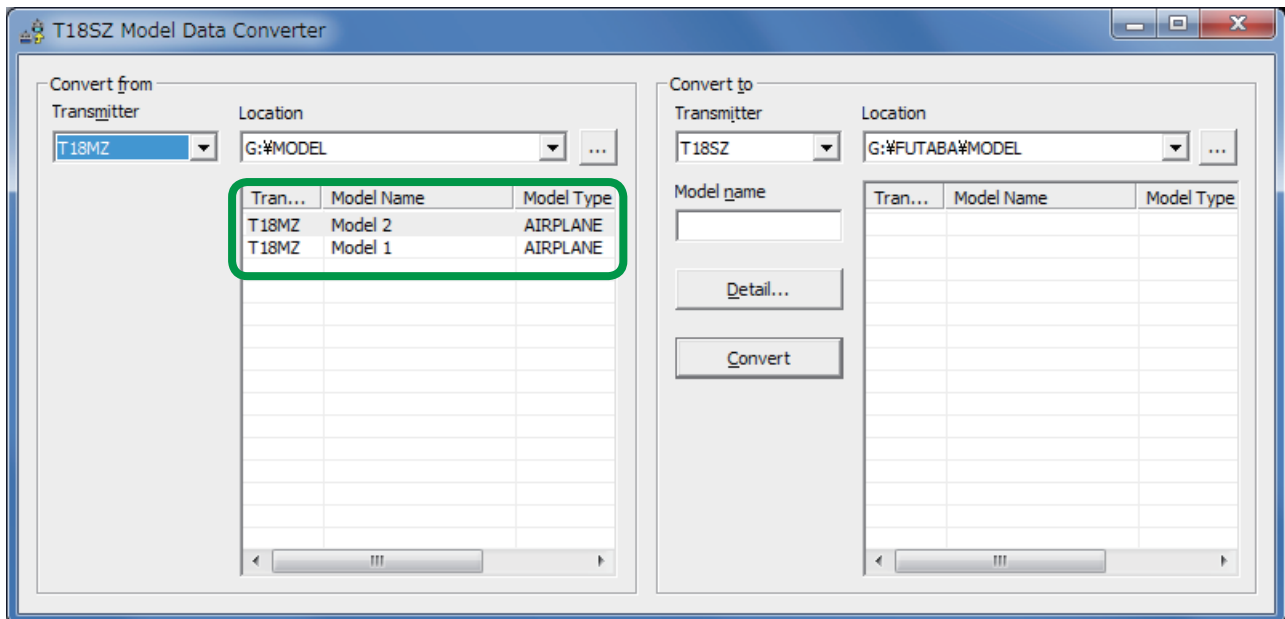


2.3. The "Browse for Folder" dialog, as shown below, will appear. Please select the directory and/or folder in which the model data is saved and click the "OK" button.



T18SZ Model Data Converter

2.4. The list of the saved model data from this card will be displayed in the Transmitter, Model Name, Model Type and Date columns in the "Convert from" group box. Select the desired conversion data from this list.

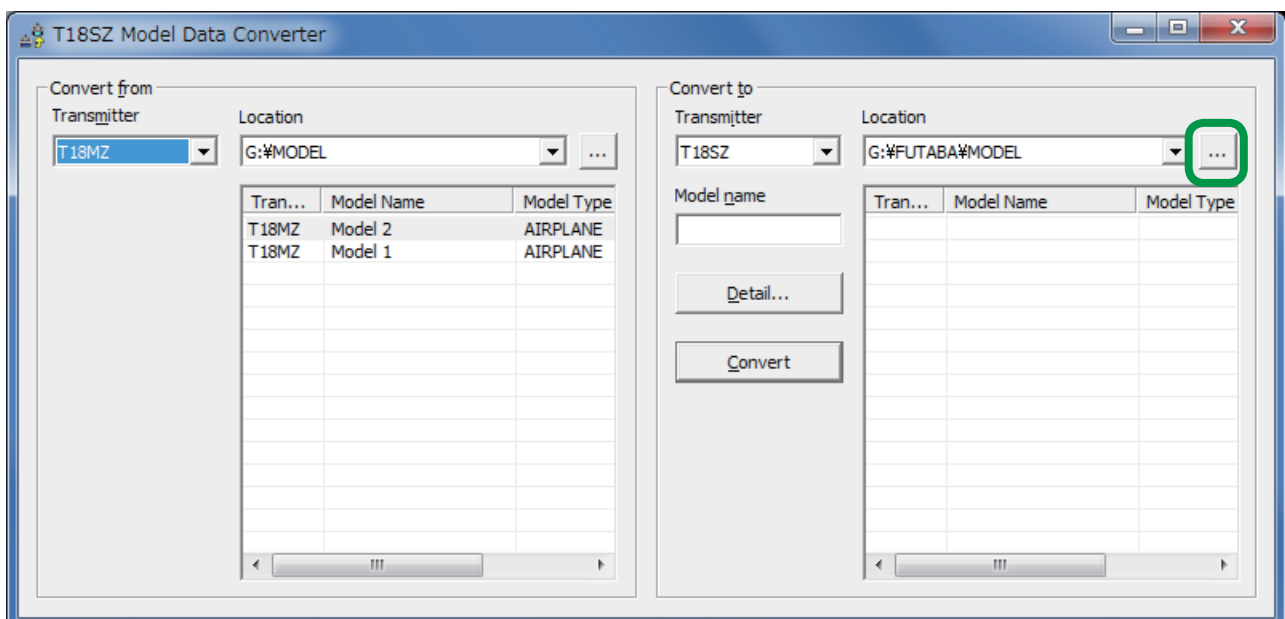


(Note) If the "Model name" text box in the "Convert to" block is blank, the selected model data name is input into this "Model name" text box automatically.

(Note) If a name is already input into the text box, it will be changed to reflect the model data name which has been selected in the "Convert from" group box.

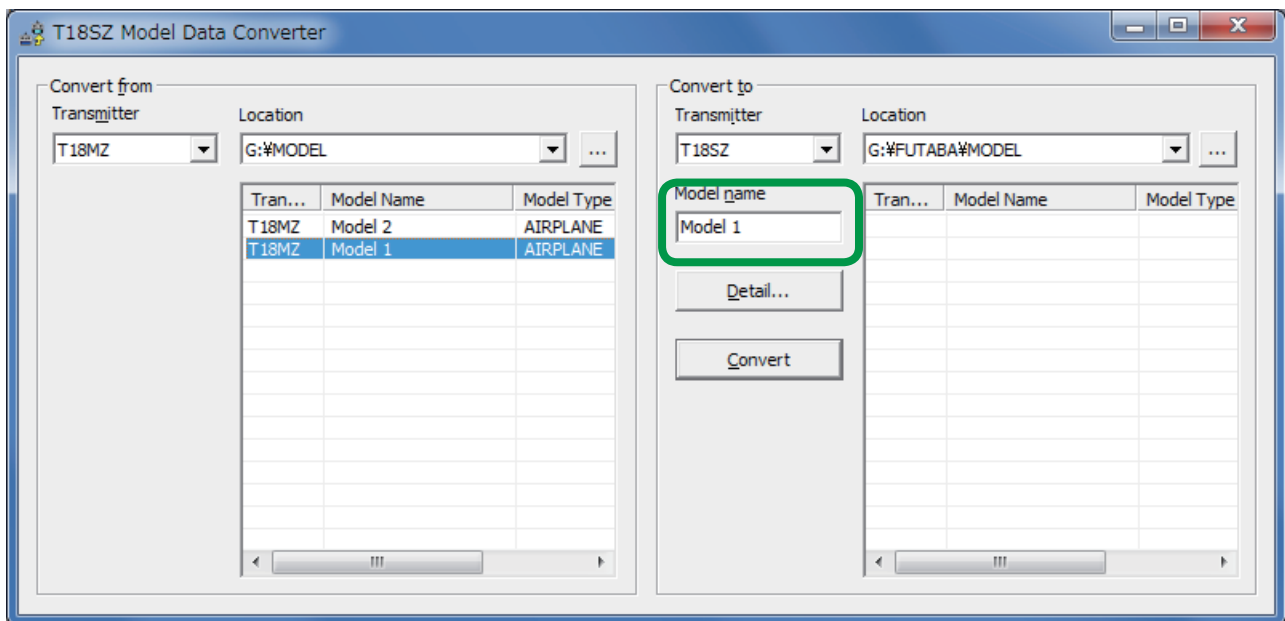
3. Select the Intended Location for the Converted Data

3.1. Click the "..." button of the "Convert to" group box and select the respective folder or directory designation. Once you are satisfied with the selection, click the "OK" button.



T18SZ Model Data Converter

3.2. Click on the "Model name" text box. Using the PC's keyboard, enter a new name for the model. Please note: this will be the name displayed in the "Model name" columns of the "Convert to" group box when the data is converted.

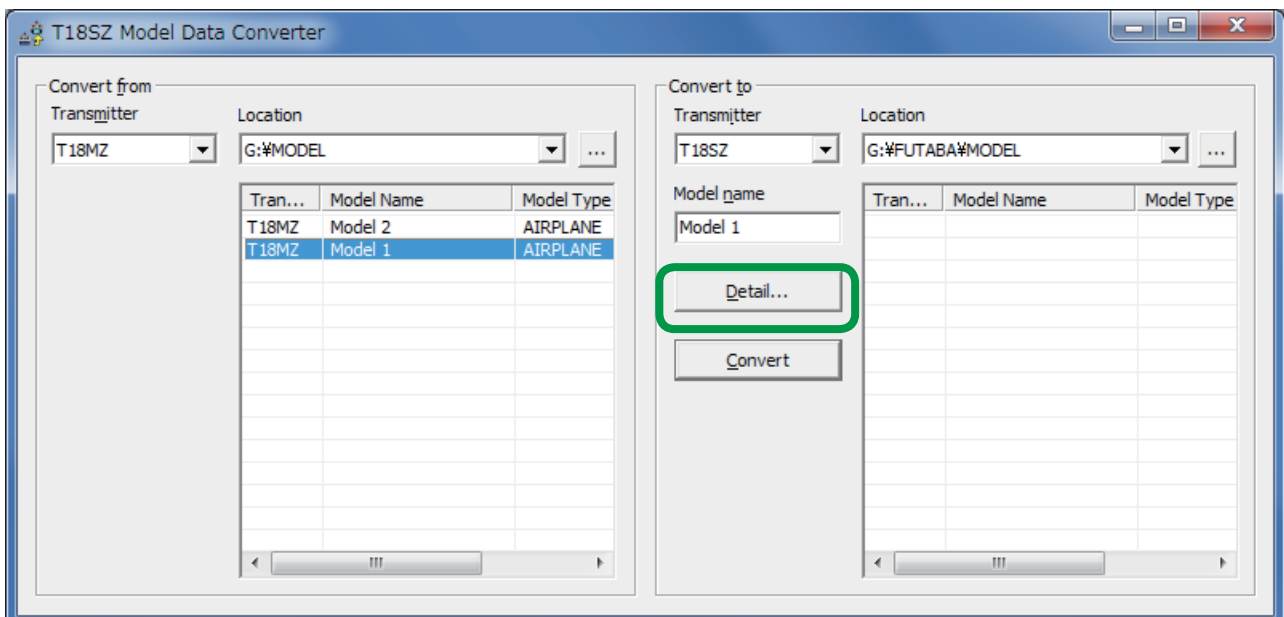


4. Detailed setting

It is possible to change the "condition name", "dual rate name", and "hardware assignment" during the data conversion.

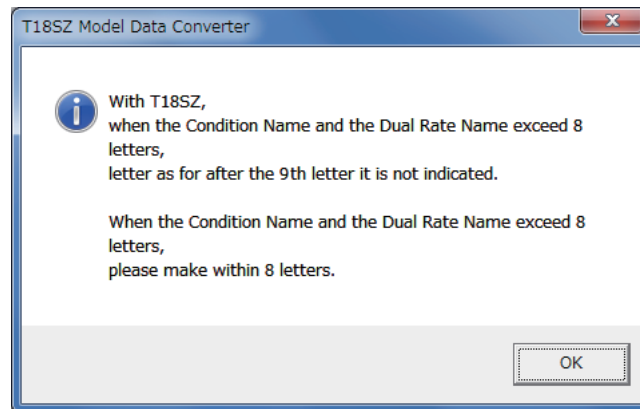
If you do not desire to make these changes, it is not necessary to follow the steps in this section.

4.1. Click the "Detail" button in the "Convert to" group box.

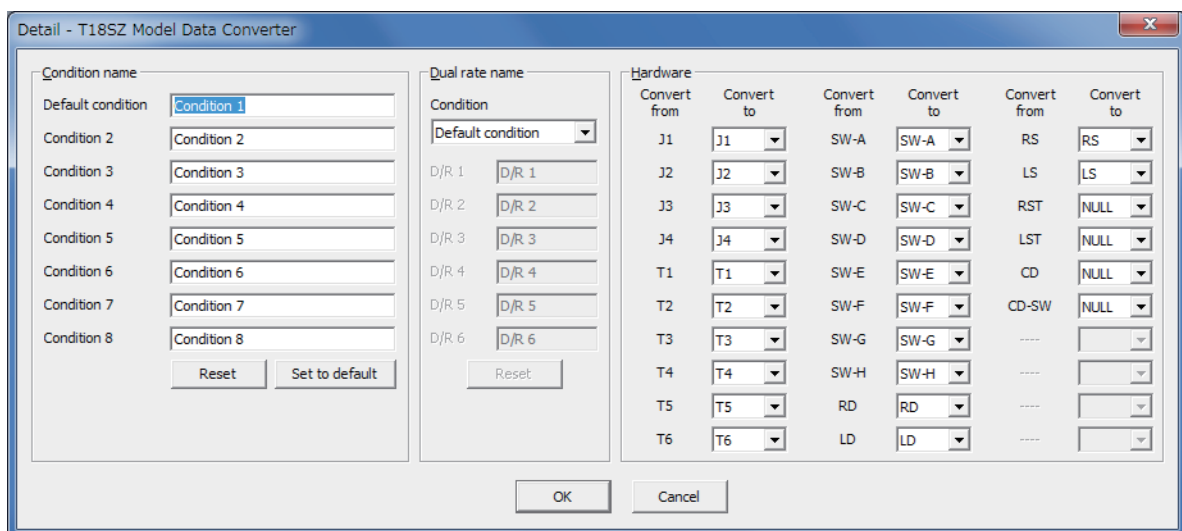


T18SZ Model Data Converter

4.2. Click the "OK" button after you have read the information in the dialog box which appears.



4.3. The "Detail" dialogue is displayed. If you are satisfied with the detailed settings, click the "OK" button. To make refinements to this information, please refer to the information below contained in the Condition Name, Dual rate Name and Substitute Hardware function sections.



[Condition Name]

- * Please input the new condition name into the text box of the respective editing condition.
- * If you click the "Reset" button of the "Condition name" block, and select "Yes" in the confirmation dialog, the condition names are initialized using the name of the conditions from the original data.
- * If you click the "Set to default" button of the "Condition name" block, and select "Yes" in the confirmation dialog, the condition names are initialized in an abbreviated form with only eight (8) characters. For example, "CONDIT1" rather than "Condition 1".

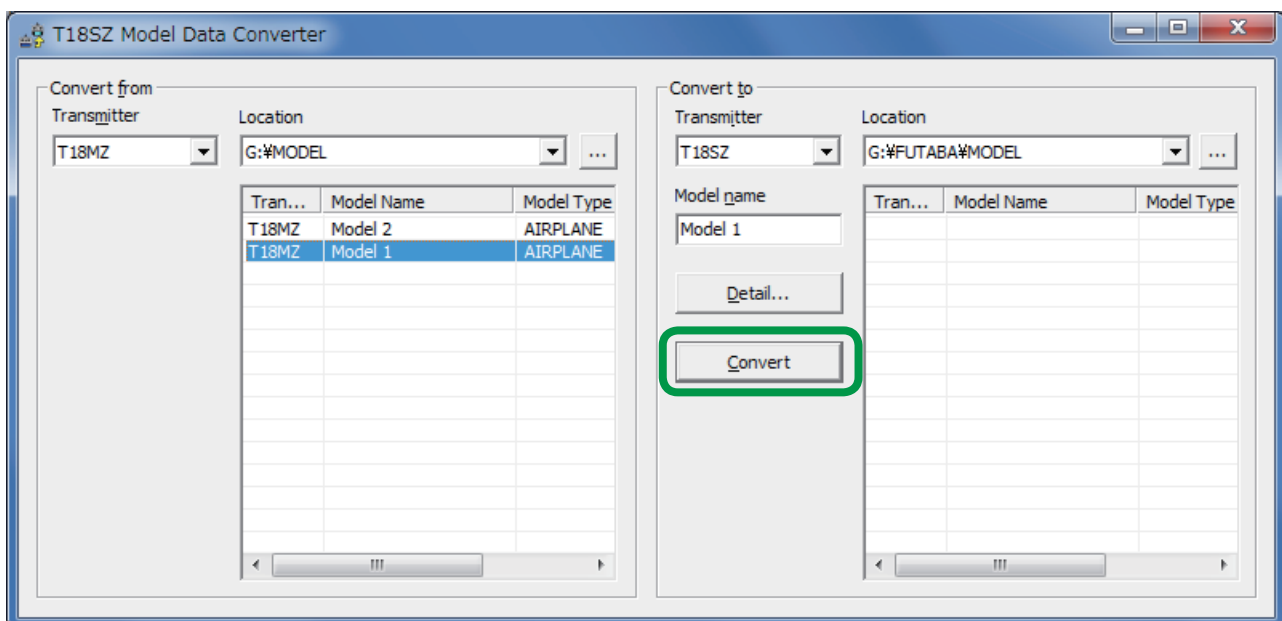
T18SZ Model Data Converter

[Substitute hardware function]

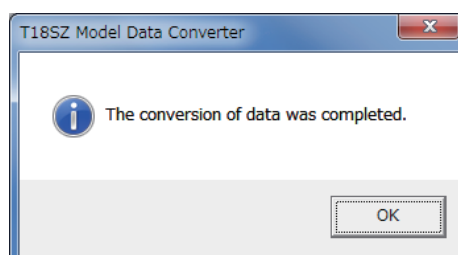
- * The Futaba Model Data Converter can substitute hardware if the intended transmitter is not equipped with the same items. For example, if the source code transmitter utilized an "RST" designation, the converted data may be replaced by "RS" if the destination transmitter does not utilize the "RST" designation but uses "RS" instead.
- * If the intended transmitter does not utilize the same hardware, the initial value of the hardware is set to NULL.
- * The substitution of switch hardware and the linear hardware is not possible.
 - Switch hardware ...SW-A, SW-B, SW-C, SW-D, SW-E, SW-F, SW-G, SW-H
 - Linear hardware ...LD, RD, LS, RS, J1, J2, J3, J4, T1, T2, T3, T4, T5, T6

5. Data conversion

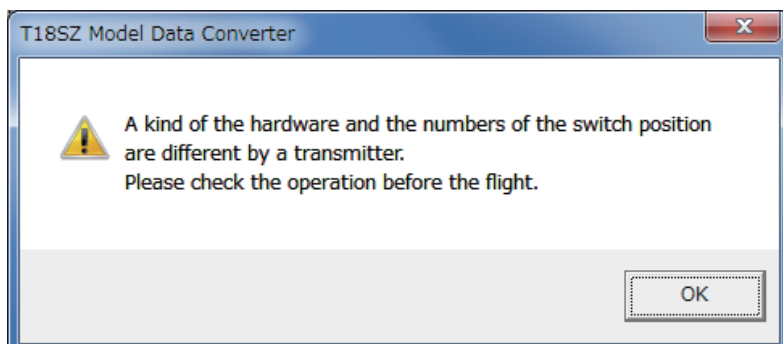
5.1. Click the "Convert" button.



5.2. If successful a dialog box, as shown below, will appear. Please click the "OK" button.



5.3. Depending upon the source and destination transmitter models, a warning dialog might appear. Read the information in the dialog box prior to clicking the "OK" button. Additionally, we suggest that you check the operation of the model prior to flight.



6. Precautions and warnings

● Data Conversion from T18MZ Data

1. Telemetry setting data are not converted by the converter.
2. The Box/Hysteresis setting of the hardware is canceled.
3. The nested logic switch is set to NULL.
4. All logic switches except the "Condition Select" are set to NULL.
5. The Linear/VTR/Spline curve is changed to a point curve.
6. The combination setting is set to Single mode unless it is set in all Condition to Group.
7. The setting of "Fuel Mixture" and "Multi Engine" are initialized.

● Data Conversion from T14SG Data

1. If original data whose system type is "FASSTest-14CH", it will be converted to "FASSTest-18CH".
2. From 12th to 16th channels will be assigned "Auxiliary1" function.
3. "VPP" function will be converted to "Auxiliary7" function.
4. The function of STICK ALARM will be converted to "Throttle" function.
5. If "Vibes" types are set to "TYPE4", they will be converted to "Type1".
6. No data of telemetry settings will be converted.
7. The vibrator setting of CONDITION SELECT will be not converted.
8. If condition name contain Japanese special characters "フ" or "ト", they will be converted to "フ" or "ト".
9. DUAL RATE 1st rate of each function will be converted to AFR of T18SZ. If function whose Switch mode is set to "COND", 2nd D/R to 5th D/R will be converted AFR of from 2nd Condition to 5th Condition. If function whose Switch mode is set to "SW", 2nd D/R and 3th D/R of only AILERON, ELEVATOR and RUDDER will be converted D/R of T18SZ.

● D/R converted results in "COND" mode

Original data of T14SG	Converted result of T18SZ
1st D/R	AFR of 1st Condition
2nd D/R	AFR of 2nd Condition
3rd D/R	AFR of 3rd Condition
4th D/R	AFR of 4th Condition
5th D/R	AFR of 5th Condition

● D/R converted results in "SW" mode

Original data of T14SG	Converted result of T18SZ
1st AILERON D/R	Aileron AFR of 1st to 5th Conditions
2nd AILERON D/R	D/R 1 of 1st to 5th Conditions
3rd AILERON D/R	D/R 2 of 1st to 5th Conditions
4th AILERON D/R	Not converted
5th AILERON D/R	Not converted
1st ELEVATOR D/R	Elevator AFR of 1st to 5th Conditions
2nd ELEVATOR D/R	D/R 3 of 1st to 5th Conditions
3rd ELEVATOR D/R	D/R 4 of 1st to 5th Conditions
4th ELEVATOR D/R	Not converted
5th ELEVATOR D/R	Not converted
1st RUDDER D/R	Rudder AFR of 1st to 5th Conditions
2nd RUDDER D/R	D/R 5 of 1st to 5th Conditions
3rd RUDDER D/R	D/R 6 of 1st to 5th Conditions
4th RUDDER D/R	Not converted
5th RUDDER D/R	Not converted
1st D/R of other functions.	Related function's AFR of 1st to 5th Conditions
2nd D/R of other functions.	Not converted
3rd D/R of other functions.	Not converted
4th D/R of other functions.	Not converted
5th D/R of other functions.	Not converted

10. If data of model type is AIRPLANE, GLIDER or MULTICOPTER, THR CURVE and THR DELAY will be converted to Throttle AFR of T18SZ.
11. If data of model type is AIRPLANE, PIT CURVE will be not converted.
12. Butterfly Adjust of AIL DIFF. will be not converted.
13. Throttle limiter function will be not converted.
14. FUEL MIX will be not converted.
15. User Menu function will be not converted.
16. 2nd Home screen (large size timer) will be not converted.
17. Display unit selection of T1-T4 SET. and Trim memory function will be not converted.
18. Though the converter converts value of fine tuning VR settings, actual tuning range of converted data is different from that of original data because of difference of behavior about fine tuning between T14SG and T18SZ.
19. If MODE of CMBFLP to ELE is set to "MODE B", it will be not converted.
20. If data of model type is AIRPLANE or MULTICOPTER, fine tuning VR setting of GYRO will not converted.
21. START SW function and TRIM function of MOTOR will be not converted.
22. If data of model type is HELICOPTER, fine tuning VR setting of GYRO will not converted.
23. Individually adjust the Throttle Cut activation setting for each condition will be not converted.
24. If switch mode is set to "SW" in GYRO or GOVERNOR mixing, only 1st to 3rd rates will be converted.

7. Error Message

Message	No items were selected in the "Convert from" group. Please select an item on the model list.
Explanation	The model name of conversion data is the same as an existing model name.
What to do	Model data cannot be displayed on a list of "Convert from" block. Please set "Location" of the "Convert from" block to the location where the source conversion data is saved. If the location is correct, the items are displayed on the respective list and it will be possible to select amongst these items.

Message	There is "file path" file. Please change the Model Name.
Explanation	There is already the model data of the same name. As such, you must rename the data accordingly.
What to do	Please input a unique name into the "Model name" text box of the "Convert to" group box. You can confirm the name of other model data from the list of the "Convert to" group box.

Message	The "Transmitter" type of the "Convert from" group is not correct. Please check the "Transmitter" type and the items on the model list in the "Convert from" group.
Explanation	The transmitter type information of the source code information is different from the transmitter type chosen in "Transmitter" of the "Convert from" group box.
What to do	Confirm that the model data are for T18MZ.

Message	Could not open the "file path" file. Please check the Location in the "Convert from" group.
Explanation	After the setting of origin of conversion data, it appears that a file was erased, or that the memory card was removed prematurely.
What to do	Select the source conversion data once again.

Message	Could not open the "file path" file. Please check the Model Name and the Location in the "Convert to" group.
Explanation	After the selecting the source data, it appears that a folder set in the "Location" of the "Convert to" group box was erased, or that a memory card was removed prematurely.
What to do	Choose the location of conversion data once again

T18SZ Model Data Converter

Message	Unsupported data selected. This data is saved with the transmitter of an older version of the software. Please update your transmitter accordingly.
Explanation	The structure of model data is different in the version saved in the transmitter's memory. As such, the model data converter cannot convert the old data as it is unsupported.
What to do	Select the origin of conversion data in the "Model Select" screen of the transmitter after it has been updated to the latest software version. Next, try converting the data once again.

Message	Unsupported data selected. Please use a newer data converter.
Explanation	The structure of model data is different than the version of a saved transmitter. The model data converter cannot support the data of the future transmitter software.
What to do	Download the latest version of the model data converter. Next, try converting the data once again.

Message	Please enter a model name into the "Model name" in the "Convert to" group.
Explanation	The "Model name" text box in the "Convert to" block is blank.
What to do	Enter a model name into the "Model name" in the "Convert to" group box.

Message	The model name is too long. Please check the "Model name" in the "Convert to" group. When converting data to the T18SZ, please edit the model name so that it is no longer than 8 characters.
Explanation	The number of model name characters exceeds the allowable limit.
What to do	Enter a shorter name into the "Model name" in the "Convert to" group box.

Message	The use of the character which is not usable for a model name in the T18SZ. Please check the "Model name" in the "Convert to" group.
Explanation	The model name contains unusable characters. Some characters cannot be used for a model name in the T18SZ. For example, "Japanese KANJI".
What to do	Please enter a new model name into the "Model name" in the "Convert to" group box. (Note) The following characters are usable for the T18SZ. 0 to 9, A to Z, a to z, and signs (" * / : < > ? \ are unusable).