

Zusatzanleitung für die Sender T14MZ / FX-40, Software-Update Version 1.3

Hinweis!

Die Software-Versionen 1.2 oder höher sind nicht abwärtskompatibel zu den Versionen 1.1 oder früher. Da die Software der Anlage aufwärtskompatibel ist, können Modelldaten welche mit früheren Softwareversionen erstellt wurden auch von der neuen Softwareversion gelesen werden.

Verlängerung der Reichweitentestzeit

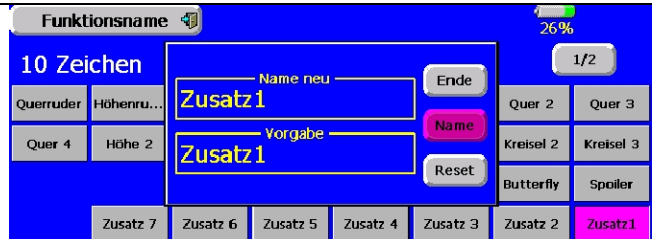


Um den RW-Testmodus zu verlängern, die „Restart“-Taste während der ablaufenden 90 Sekunden drücken, was einen Neustart bewirkt.

Freie Benennung der Funktionsnamen.



Dazu im Basismenü die Taste „Funktionsname“ drücken.



Funktion wählen, hier im Beispiel Zusatz 1.

Auf den beiden Menüseiten (1/2, 2/2), **muss** sowohl ein 4- als auch maximal 10-stelliger Name für die jeweilige Funktion vergeben werden, da die Anzeige in den diversen Menüs unterschiedliche Zeichenzahl besitzt. (Siehe Beispiele unten).



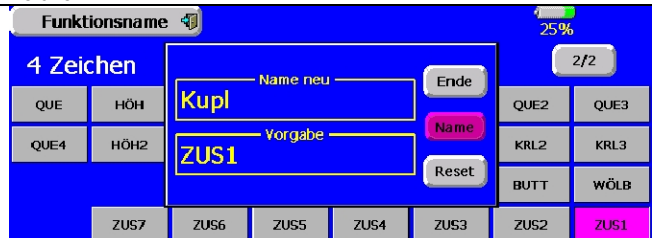
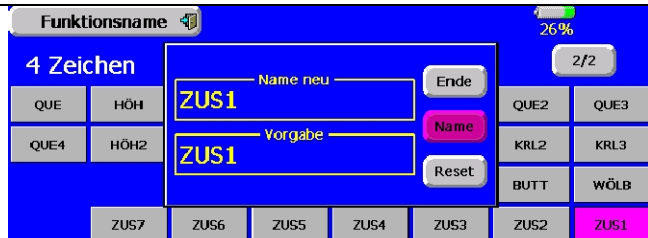
Bisherigen Namen mit „del“ oder „BS“ löschen.

Neuen Funktionsnamen eingeben.



Anzeige von Systeminternem Namen (Vorgabe) und neuem Funktionsnamen.

Für Übersichtsanzeigen wie Servo Monitor etc. ist erforderlich auch eine Abkürzung des Funktionsnamens einzugeben, maximal 4 Zeichen.



Beispiel für die 10-stellige Anzeige im Menü „Funktionen“.

Beispiel für die 4-stellige Anzeige im Menü „Servo Monitor“.

Umpolung der Schaltrichtung von Schalter „NULL“

Es besteht nun wahlweise die Möglichkeit, ein Mixprogramm über den Schalter „Null“ generell ein- oder auszuschalten .

Setzen Sie dazu den EIN-AUS Mode des Schalters „Null“ auf Ein = immer eingeschaltet, oder Aus = immer ausgeschaltet

Übernahme der Einstellungen bei Wechsel des Taumelscheibentyps

Mit dem neuen Software-Update besteht die Möglichkeit, den Taumelscheibentyp zu ändern, ohne dass die Kurveneinstellungen gelöscht werden.

vorher	nachher	ohne Datenverlust
H-1,H-2,HE3,HR3,HN3,H-3	H-1,H-2,HE3,HR3,HN3,H-3	möglich
H-4,H-4X	H-4,H-4X	möglich
H-1,H-2,HE3,HR3,HN3,H-3	H-4,H-4X	nicht möglich
H-4,H-4X	H-1,H-2,HE3,HR3,HN3,H-3	nicht möglich

Dies ist allerdings nur bei oben stehenden Kombinationen möglich. Bestätigt man die Abfrage „Alle Daten löschen?“ mit „Nein“, so bleiben diese erhalten.

Individuelle Lautstärkeeinstellung

Im Systemmenü „Lautstärke“ kann man eine Lautstärkeanpassung der verschiedenen Töne und Signale vornehmen, wobei sich die Lautstärke für „Fehler/Alarm“, aus Sicherheitsgründen, nicht niedriger als ca. 30% einstellen lässt.

Erweiterte Modelltypauswahl für Flugmodelle, bei PCM 1024 Modulation

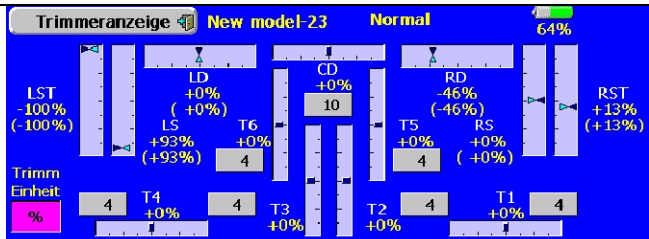
Beim Modelltyp Segler, kann man nun auch bei PCM 1024 Modulation, Modelle mit 6-Klappen auswählen.

Stoppuhr wahlweise mit oder ohne Reset

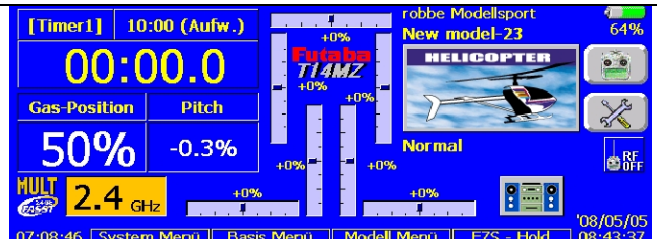


Im Menü „Stoppuhr“ kann nun eine Memory-Funktion aktiviert werden, welche die Uhr bei einem Neustart nicht zurücksetzt.

Umschaltbare Trimmwertanzeige Step / %

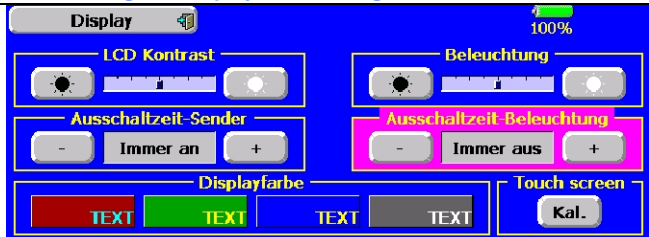


Die Trimmwertanzeige ist nun wahlweise umstellbar auf die Anzeige der Schrittweite „Step“, oder des Prozentwertes „%“.



Anzeige ebenfalls im Startdisplay.

Abschaltung der Displaybeleuchtung



Zur Energieeinsparung kann die Displaybeleuchtung abgeschaltet,

also auf „Immer aus“ gestellt werden.

Unterdrückung der Geberweg (AFR) Einstellung bei gemischten Funktionen.

Ka	Funktion	Ka	Funktion	Ka	Funktion
1	Höhenruder	7	VC1		
2	Seitenruder	8	VC2		
3	Zusatz 4	9	Wölbklappe	VC3	Zusatz 1
4	Querruder	10		VC4	Zusatz 1
5		11	Zusatz 2		
6	Zusatz 3	12	Zusatz 1		

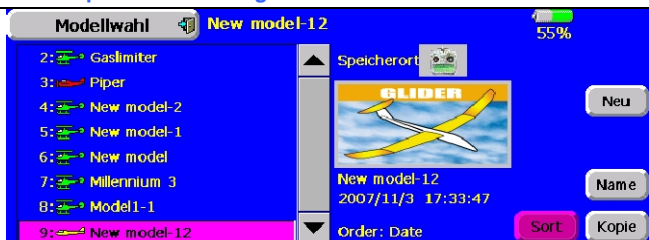
Dazu gehören die Funktionen:

- Querruder 2,3,4, • Wölbklappen 2,3,4 • Seitenruder 2
- Gas (nur Hubschrauber) • Pitch • Spoiler • Gyro
- Drehzahlregler • Mischer • Multiprop

Seit der Updateversion 1.0.10 ist es nicht mehr möglich bei Funktionen, welche bereits über einen Mischer verbunden sind (2. Querruder etc.) zusätzlich einen weiteren Steueregeber zu wählen.

Mit dieser Softwareversion werden diese Funktionen oder solche die über ein eigenes Einstellmenü verfügen (Gyro), der besseren Übersicht wegen, ausgeblendet.

Modellspeichersortierung nach Name und Datum oder manuell



Nun gibt es endlich die Möglichkeiten Modellspeicher zu sortieren. Nach Betätigung der „Sort“-Taste im Menü „Modellwahl“ erscheint ein Untermenü für die manuelle Sortierung der Modellspeicher.



Mittels der Up- und down-Tasten wird der „markierte“ Modellspeicher in seiner Position verschoben. Drückt man die „Auto“-Taste...

...besitzt man die Möglichkeit, die Modellspeicher nach Datum bzw. Namen zu sortieren.

Das Betätigen der „Ende“-Taste schließt diesen Vorgang ab.

Automatische Optimierung und Konfiguration der Empfängerausgänge

Bei Modellwechsel kann die Kanalreihenfolge durch Auswahl des Buttons „Nein“ beibehalten, oder durch „Ja“ entsprechend der

ausgewählten Modulationsart auf den Vorgabewert zurückgesetzt werden.

Modellspeicher Timer

Im Systemmenü unter „Datum-Uhrzeit“ ist es nun möglich, die bisherige Systemzeitanzeige, umzuschalten auf einen individuellen Modellspeicher Timer. Durch Drücken der Taste „Total“ wird auf Modell umgeschaltet. Somit werden nun die Nutzungszeiten der

einzelnen Modellspeicher angezeigt. Die Systemzeit läuft im Hintergrund weiter, zur Anzeige diese durch Drücken der Taste „Modell“ aufrufen.

FX-40 Software Update Function Modification Contents

(Editor Version:1.3.0, Encoder Version:1.39)

⚠ CAUTION

❗ To cope with 2.4GHz systems, when the software is updated to this version, the model data is converted to the new model. If the system is used by copying the transmitter model data of software version 1.2.0 and later versions to a transmitter of an older version, it will not operate normally. Always upgrade the copy destination transmitter to version 1.2.0 or a later version.

If the model data of a transmitter older than version 1.2.0 is copied to a version 1.2.0 or later version transmitter, the system will not operate normally because the data is automatically converted by the copy destination transmitter.

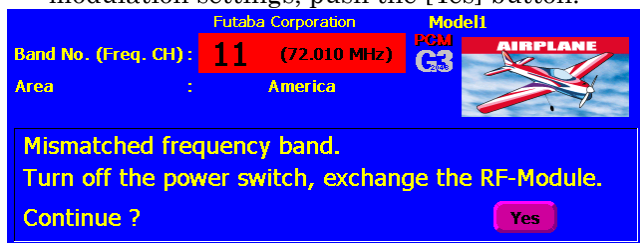
Changing the RF Modulation

The FX-40 transmitter is compatible with Futaba's TM-14 Module FASST 2.4GHz system.

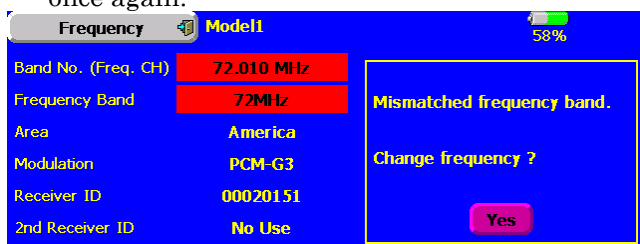
- When switching from the existing FX-FM module to the TM-14, the TM-14 to the FX-FM module, or similar situation, it is necessary to reset the band accordingly.
- When using the TM-14 and Futaba FASST receiver, it is necessary to link the transmitter module to the respective receiver prior to using them for the first time. This process will only be necessary the first time that these items are used. The unique identification code will be stored in the receiver.
- When using the TM-14 FASST system, the DSC function has been disabled as it is unnecessary. Futaba's FASST system will prevent any RF interference issues which might have arisen in the previous RF modulation.
- The multiprop function cannot be used.

How to Set the Band

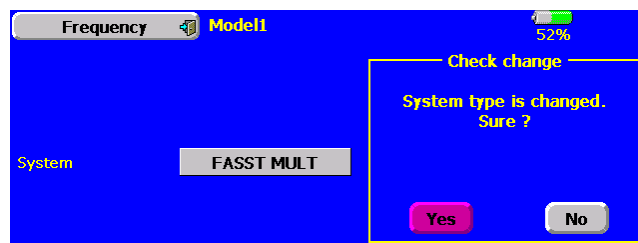
1. With the transmitter's power OFF, remove the existing RF module and replace it with the TM-14 module.
2. Turn ON the transmitter's power switch. Since the RF module was replaced by an RF module that varies from the previous settings, an on-screen warning is displayed. To change the modulation settings, push the [Yes] button.



3. In the linkage menu, select the frequency setting [Frequency]. A message confirming the band change is displayed. Press the [Yes] button once again.



4. A channel mode selection screen is displayed. Press the [Yes] button.



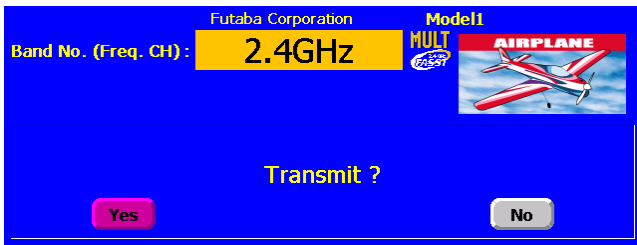
5. A function channel relocation confirmation screen is displayed. When the [YES] button is pressed, the function channel assignment changes to the optimum setting in the FASST system. When the [NO] button is pressed, the setting does not change.

❗ After the channel assignment has been changed, always change the receiver connections.

- In the FASST system, the optimum channel assignment and optimum setting in the conventional modulation mode are different.



6. The band setting changes accordingly to reflect the selection of the 2.4GHz band. The display will return to the frequency confirmation screen.



Range Check Mode Operation

The 'range check mode' reduces the transmission range of the radio waves to allow for a ground range check.

- The range check mode, when activated, will continue for 90 seconds unless the user exits this mode early. When the progress bar reaches 90s, the RF transmission automatically returns to the normal operating power.

⚠ WARNING

Do not fly in the range check mode.

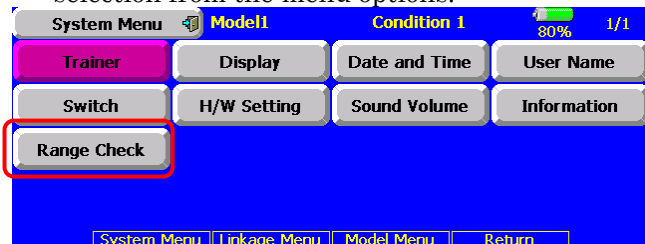
- Since the range of the radio waves is short, if the model is too far from the transmitter, control will be lost and the model will crash.

1. Turn ON the transmitter's power switch. Select [No] on the frequency confirmation screen.

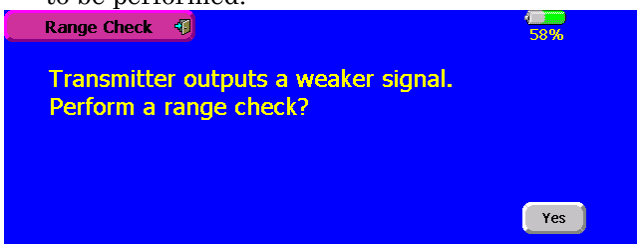


- For safety, the RANGE CHECK mode can not be selected while the RF transmission is active.

2. In the system menu, choose the 'Range Check' selection from the menu options.

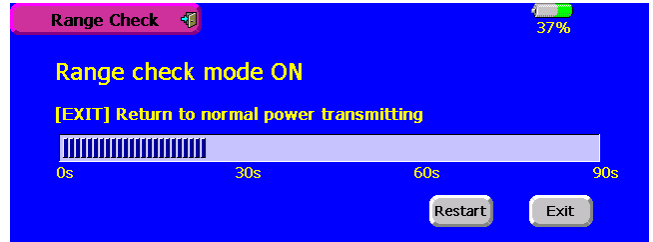


3. The Range Check screen is displayed. To activate the Range Check mode press the [Yes] button. During the Range Check period, the RF power is reduced to allow the ground range tests to be performed.



4. The Range Check mode is automatically reset after the 90 second time limit has expired. The progress bar is displayed on the transmitter's screen. Should you complete the range check before the 90 seconds has passed, press the [Exit] button.

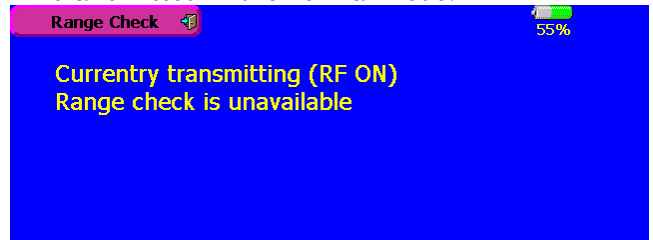
- When the [RESTART] button is pressed, the range check mode timer is returned to 0.



Please note, upon expiration of the 90 seconds, or when [Exit] is selected, the transmitter will automatically return to the normal RF operation as noted on the display.

- Once the transmitter is transmitting the normal RF signal, it is not possible to enter the Range Check mode once again without powering OFF the transmitter. This has been designed to prevent a modeler from inadvertently flying in the Range Check mode.

5. When the [Exit] button is pressed, the Range Check mode is reset and radio waves are transmitted in the normal mode.



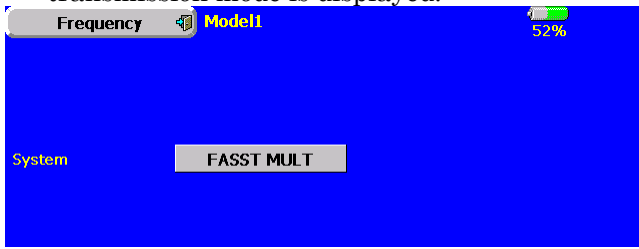
- After the Range Check mode was reset, it cannot be selected again. To select the Range Check mode again, turn on the power switch and start from the beginning.

Channel Mode Selection

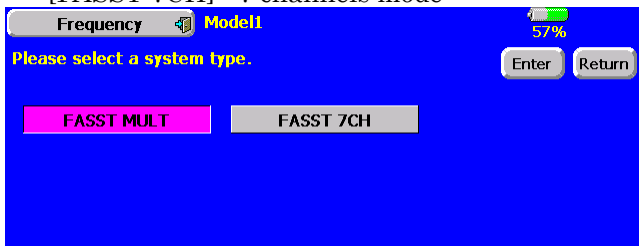
When using the TM-14 RF module with the FX-40, there are two modes of operation available: multi-channel mode (as utilized in conjunction with the R6014FS receiver) and 7-channel mode (used for receivers such as the R617FS). It is important to set the channel mode selection to match the receiver being utilized in the model. Please refer to the chart below as a reference guide.

Transmitter		Receiver		
		R606FS R616FFM	R607FS R617FS	R608FS R6014FS
TM-14 Module	Multi-ch mode	-	-	Okay
	7ch mode	Okay	Okay	-

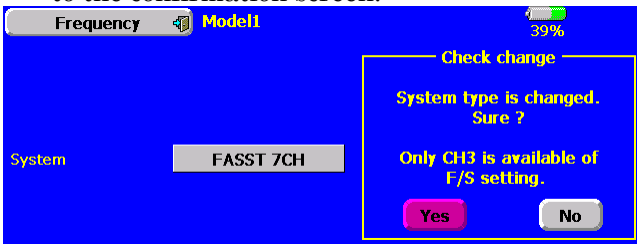
1. Access the frequency setting 'Frequency' in the linkage menu. The currently selected transmission mode is displayed.



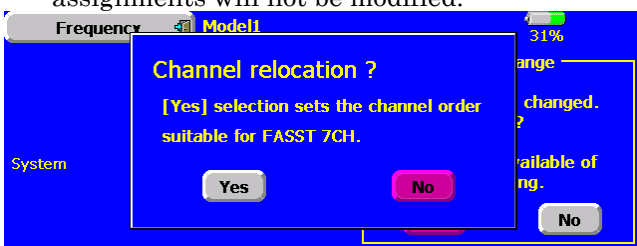
2. To change the mode selection, press the transmission mode button.
3. Transmission mode buttons are displayed. Press the new transmission mode button.
[FASST MULT] : Multi channel mode
[FASST 7CH] : 7 channels mode



4. Press the [Enter] button. The display will return to the confirmation screen.



5. A channel relocation dialog will appear. If you wish to relocate the channel assignments, press the [Yes] button. If not, select [No]. The channel assignments will not be modified.



(Information pertaining to the 7 channel mode)
When the 7 channel mode is selected, the following conditions are applicable:

- While the setting items of channels 8 and above may appear in the various menu options (e.g., sub trims, servo reverse, etc.), the only settings which are applicable are those of channels 1-7.
- When using the 7 channel mode, fail safe is only available for channel three (throttle). If/when the fail safe for channel three has been activated, the battery fail safe is also active. Unlike the multi channel mode, the fail safe and the battery fail safe can not be set independently.

Channel Assignment

Servo connection

Below is a reference chart which has been created to obtain the optimum performance from the FASST system in conjunction with the channel mode and various swash types.

It is important to note and adhere to this reference information in order to achieve the maximum performance from the model.

As such, please connect the servos to the corresponding channels in the chart below.

CH	Multi channel mode		7 channels mode	
	Except H-4, H4X	H-4,H4X	Except H-4, H4X	H-4,H4X
1	Aileron	Aileron	Aileron	Aileron
2	Elevator	Elevator	Elevator	Elevator
3	Pitch	Pitch	Throttle	Throttle
4	Rudder	Elevator2	Pitch	Pitch
5	Gyro	Rudder	Gyro	Gyro
6	Throttle	Throttle	Rudder	Rudder
7	Governor	Gyro	Governor	Elevator2
8	Governor2	Governor	AUX5	AUX5
9	Needle	Governor2	AUX4	AUX4
10	AUX3	Needle	AUX3	AUX3
11	AUX2	AUX2	AUX2	AUX2
12	AUX1	AUX1	AUX1	AUX1
VC1	AUX1	AUX1	AUX1	AUX1
VC2	AUX1	AUX1	AUX1	AUX1
VC3	AUX1	AUX1	AUX1	AUX1
VC4	AUX1	AUX1	AUX1	AUX1

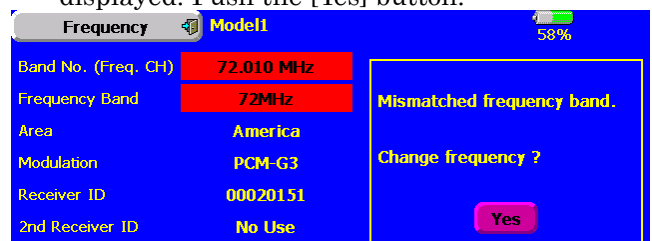
- It is important to note that these settings differ from that used in the previous G3 receivers. Utilizing the channel assignments from the G3 receivers will not allow you to obtain the ideal performance from your model.
- Please note that the settings in the chart above are the default settings. As such, when the data is reset, the channel assignments above will be utilized.

Automatic channel assignment

When using the TM-14 RF module, the FX-40 channel assignment function allows the automatic relocation of the channels (servo output) to maximize performance of the FASST system.

(Example) Change from the MZ-FM module to the TM-14 module

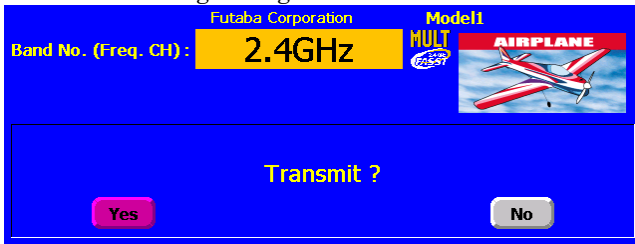
1. Replace the RF module of the FX-40 with the TM-14.
2. Turn on the transmitter.
3. Select Linkage menu.
4. Select 'Frequency' menu.
5. A band change confirmation message is displayed. Push the [Yes] button.



- A channel relocation dialog will appear. If you wish to relocate the channel assignments, press the [Yes] button. If not, select [No]. The channel assignments will not be modified.



- Band setting changes to 2.4GHz.



- The channel assignment is changed to suitable assignment of FASST.

Range Check the Radio

It is extremely important to range check your models prior to each flying session. This enables you to ensure that everything is functioning as it should and to obtain maximum enjoyment from your time flying. The TM-14 transmitter module incorporates a system that reduces its power output and allows you to perform such a range check.

- Turn on the transmitter and activate the 'RANGE CHECK' mode through the transmitter's System menu. Please note: if the RF is activated, the 'RANGE CHECK' mode will not be available to utilize. As such, do NOT activate the RF when the transmitter is turned ON.
- The LEDs on the rear of the TM-14 module will indicate that a radio frequency link has been established between the transmitter and receiver. This is noted by a solid green LED and a blinking red LED on the TM-14 module. The solid green LED indicates that the radio frequency link has been established. As indicated by the blinking red LED, the radio frequency power has been reduced to allow for the range check.
Note: the transmitter will remain in the RANGE CHECK mode for a maximum of 90 (ninety) seconds. This time limit has been established to ensure that the modeler not inadvertently forget to return to the standard power output when flying his/her model.

- Walk away from the model while simultaneously operating the controls. Have an assistant stand by the model to confirm that all controls are completely and correctly operational. You should be able to walk approximately 30-50 paces from the model without losing control.

- If everything operates correctly, return to the model. Set the transmitter in a safe, yet accessible, location so it will be within reach after starting the engine or motor. Be certain the throttle stick is in the low throttle position, then start the engine or motor. Perform another range check with your assistant holding the aircraft with the engine running at various speeds. If the servos jitter or move inadvertently, there may be a problem. We would strongly suggest you do not fly until the source of the difficulty has been determined. Look for loose servo connections or binding pushrods. Also, be certain that the battery has been fully charged.

Antenna of TM-14

- As with all radio frequency transmissions, the strongest area of signal transmission is from the sides of the TM-14 transmitter module's antenna. As such, the antenna should not be pointed directly at the model. If your flying style creates this situation, easily move the antenna to correct this situation.
- Please do not grasp the transmitter's antenna during flight. Doing so may degrade the quality of the RF transmission to the model

TM-14 LED indication

- When the transmitter is powered up, the LEDs on the rear of the module will begin to glow or blink accordingly. The chart below provides you with an easy reference as to the meaning of the LEDs.

LED Indication

Green	Red	Status
Solid	Solid	Initializing
Blink	Off	RF is off
Alternate Blink		Check nearby RF condition
Solid	Off	RF power on
Solid	Blink	RF power on (Power reduced to perform the range check function)

R6014FS LED Indication

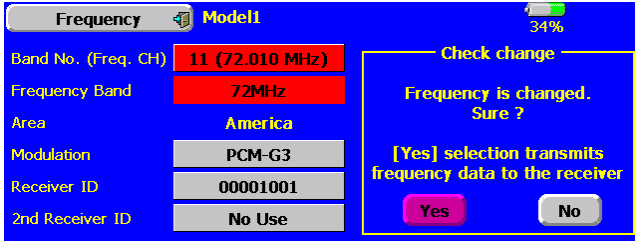
Green	Red	Status
Off	Solid	No signal received
Solid	Off	Signal received, normal operation
Blink	Off	Receiver is receiving signals but the ID is unmatched
Alternate Blink		Unrecoverable error (EEPROM, etc.)

Other modifications

Frequency setting

When a frequency setting was changed, FX-40 has to restart in the past. But plural frequency setting can be changed without restarting in the new software.

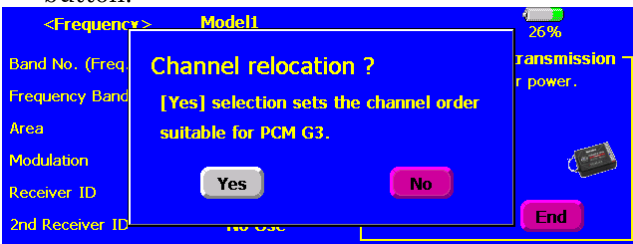
1. Change the frequency channel, the modulation mode or receiver ID using [Frequency] function of the Linkage Menu.
2. A confirmation screen is displayed.
3. If you want to change other setting, press the frequency channel button, the modulation type button or the receiver ID button.



Automatic channel assignment

A function which automatically resets the function channel to the standard value when the modulation mode (modulation) was changed has been added.

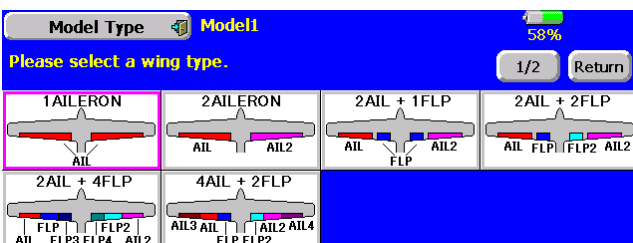
1. Change the modulation mode using the [Frequency] function of the Linkage Menu.
2. A function reset confirmation screen is displayed. To reset the function channel to the standard value, press the [YES] button. To not change the function channel, press the [NO] button.



Model type

2 ailerons + 4 flaps and 4 ailerons + 2 flaps have been added to the glider model types which can be selected in the PCM1024 mode.

- Motor gliders cannot be handled.



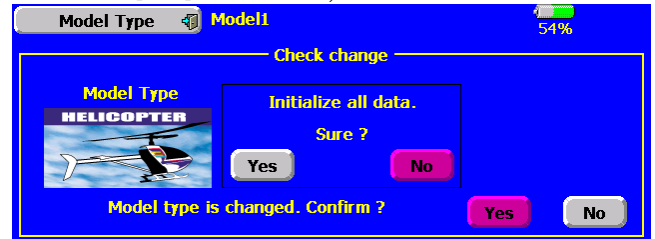
Data initialization after swash type switching

In the past, when the swash type was switched, all the model data was initialized. However, operation can now be continued without initializing the model data.

- The [Swash Setup] screen data can be initialized even when the model data is continued.
- It may not be possible to continue the model data, depending on the swash type before and after modification.

Before modification	After modification	Continuation
H-1,H-2,HE3,HR3,HN3,H-3	H-1,H-2,HE3,HR3,HN3,H-3	Possible
H-4,H-4X	H-4,H-4X	Possible
H-1,H-2,HE3,HR3,HN3,H-3	H-4,H-4X	Impossible
H-4,H-4X	H-1,H-2,HE3,HR3,HN3,H-3	Impossible

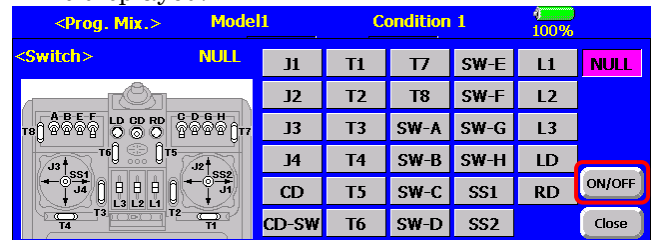
1. When the swash type is changed, and the data can be continued, a data initialization confirmation screen is displayed. When the [YES] button is pressed, the data is initialized. When [NO] is selected, the data is continued.



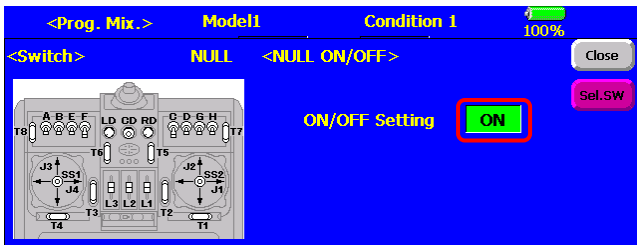
Mixing switch NULL-ON/OFF setting

When the switch which turns mixing ON/OFF was set to NULL, whether mixing is activated or inhibited can be selected.

1. Open the mixing switch selection screen. When the switch is set to NULL, an [ON/OFF] button is displayed.



2. When the [ON/OFF] button is pressed, an ON/OFF SETUP screen is displayed. When [ON/OFF SETUP] is set to ON, mixing is always on and when [ON/OFF SETUP] is set to OFF, mixing is turned off.



Function name

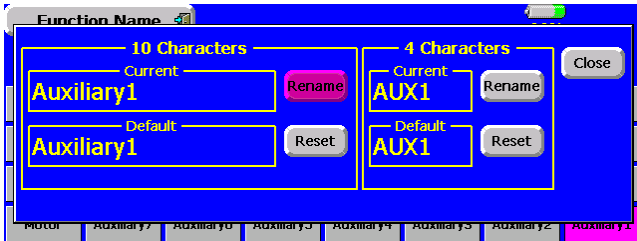
The function name can be freely changed.

- The function name may be displayed in 10 characters or 4 characters, depending on the setup screen.

- Select [Function Name] in the Linkage Menu.
- The FUNCTION NAME setup screen is displayed.



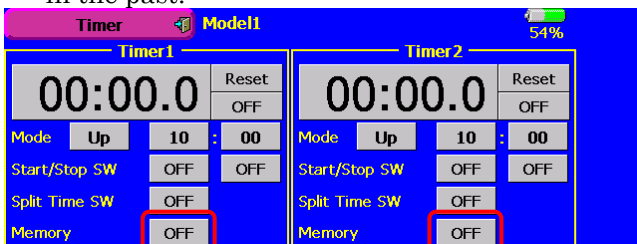
- When the function whose name is to be changed is selected, a modification screen is displayed. When the [Rename] button is pressed, a character input screen is displayed. Input the function name.
- When the [Reset] button is pressed, the function name is reset to the initial state function name.



Timer

A memory mode which does not reset the timer even when the power is turned off or the model is switched has been added.

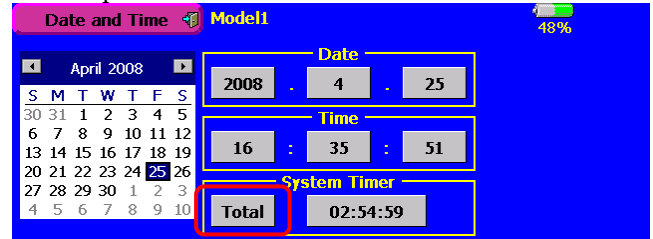
- When [Memory] on the timer setup screen is set to ON, the timer operates in the memory mode. When [Memory] is set to OFF, the timer is reset by power off and memory switching the same as in the past.



Integrating timer

A model timer mode which records the integrating timer display for each model has been added.

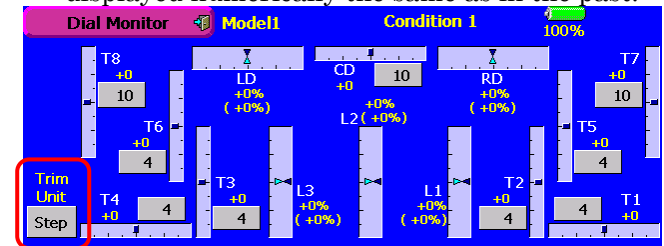
- Open [Date and Time] of the System Menu.
- When the integrating timer mode setting button is [Total], conventional operation is performed and when the setting button is [Model], the elapsed time for each model is recorded.



Trim display units

Percentage (%) display can be selected at trim.

- Open [Dial Monitor] of the Linkage Menu. When "Trim Units" is set to [%], trim is displayed in %. When "Trim Units" is set to "Step", trim is displayed numerically the same as in the past.



AFR, D/R

The following functions cannot be selected at AFR and D/R because they are not effective.

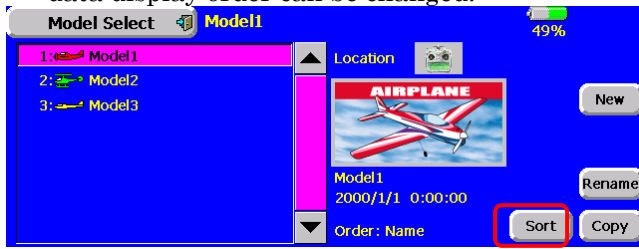
- Ailerons 2,3,4
- Flaps 2,4
- Rudder 2
- Throttle (helicopter only)
- Pitch
- Camber
- Gyro 1,2,3
- Governor 1,2
- Mixture
- Multiprop

Model selection

The model data display order can be specified. The following 3 modes can be selected:

- Name order mode (Model data is displayed in model name dictionary order. The system does not distinguish between uppercase and lowercase characters.)
- Date order mode (The data is displayed from the model data generated last.)
- Manual mode (The model data can be freely displayed in any order.)

1. Open [Model Type] of the Linkage Menu.
2. When the [Sort] button is pressed, the model data display order can be changed.



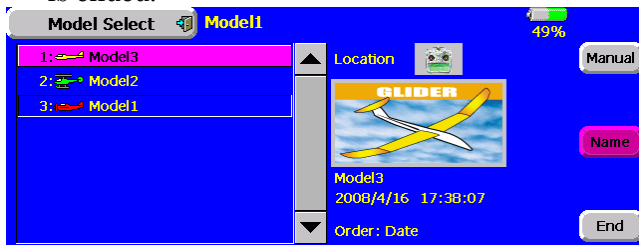
■ Name order mode

1. When the [Manual] button is pressed, the display is switched to the manual mode and when the [Date] button is pressed, the display is switched to the date order mode.
2. When the [Exit] button is pressed, mode change is ended.



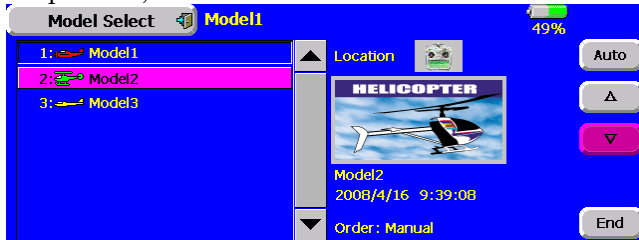
■ Date order mode

1. When the [Manual] button is pressed, the display is switched to the manual mode and when the [Name] button is pressed, the display is switched to the name order mode.
2. When the [Exit] button is pressed, mode change is ended.

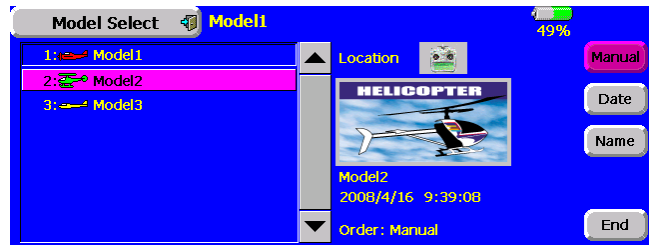


■ Manual mode

1. Select the mode whose display order is to be changed.
2. When the [Δ] button is pressed, the selected model is moved up and when the [▽] button is pressed, the selected model is moved down.



3. When the [Auto] button is pressed, the [Name] and [Date] button is displayed. When the [Date] button is pressed, the display is switched to the date order mode, and when the [Name] button is pressed, the display is switched to the name order mode.

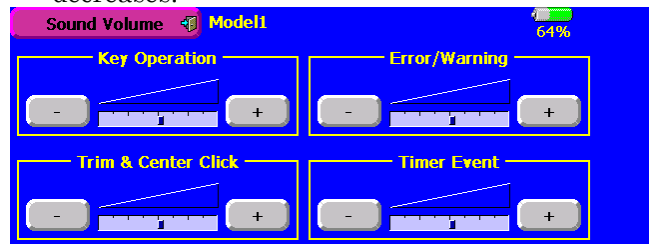


Volume modification

The volume can be set according to the type of sound. The types of sound which can be selected are:

- Key operation sound
- Error/Warning sound
- Trim and center click sound
- Timer event sound
- The volume of the Music Player can be set from the Music Player screen the same as in the past.

1. Select the [Sound Volume] button in the System Menu.
2. A sound volume setup screen opens. When the [+] button is pressed, the volume increases and when the [-] button is pressed, the volume decreases.

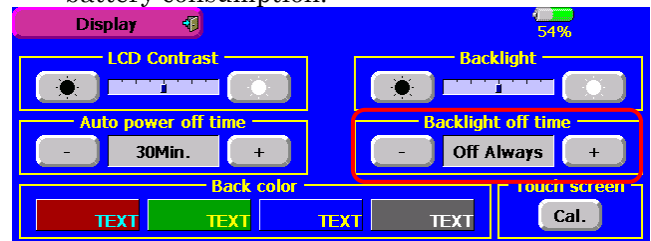


- For safety, the Error/Warning sound cannot be set below a certain volume.

Backlighting OFF time setting

Backlighting can be permanently turned off without regard to operation.

1. Open [Screen Setup] of the System Menu.
2. When "Backlighting OFF Time" is set to [Always Off], backlighting is not turned on by touch panel, rotary key, or direct keys operation. This is effective when you want to suppress battery consumption.



Direct keys

When [Return] is assigned to the direct keys, the display is returned to the previous screen.

Function channel initialization

PCM1024 mode and PPM mode function channel setting was changed as shown below.

■ Normal and V-tail

CH	1Aileron			2Aileron			2Aileron + 1Flap		
	Airplane	EP Glider	Glider	Airplane	EP Glider	Glider	Airplane	EP Glider	Glider
1	Aileron	Aileron	Aileron	Aileron	Aileron	Aileron	Aileron	Aileron	Aileron
2	Elevator	Elevator	Elevator	Elevator	Elevator	Elevator	Elevator	Elevator	Elevator
3	Throttle	Motor	AUX1	Throttle	Motor	AUX1	Throttle	Motor	AUX7
4	Rudder	Rudder	Rudder	Rudder	Rudder	Rudder	Rudder	Rudder	Rudder
5	Gear	AUX7	AUX7	Gear	AUX7	AUX7	Gear	AUX6	AUX6
6	Airbrake	Airbrake	Airbrake	Aileron2	Aileron2	Aileron2	Flap	Flap	Flap
7	AUX6	AUX6	AUX6	AUX6	AUX6	AUX6	Aileron2	Aileron2	Aileron2
8	AUX5	AUX5	AUX5	AUX5	AUX5	AUX5	AUX5	AUX5	AUX5
VC1	AUX1	AUX1	AUX1	Camber	Camber	Camber	Camber	Camber	Camber
VC2	AUX1	AUX1	AUX1	AUX1	Butterfly	Butterfly	AUX1	Butterfly	Butterfly
VC3	AUX1	AUX1	AUX1	AUX1	AUX1	AUX1	AUX1	AUX1	AUX1
VC4	AUX1	AUX1	AUX1	AUX1	AUX1	AUX1	AUX1	AUX1	AUX1

CH	2Aileron + 2Flap			2Aileron + 4Flap	4Aileron + 2Flap
	Airplane	EP Glider	Glider	Glider	Glider
1	Aileron	Aileron	Aileron	Aileron	Aileron
2	Elevator	Elevator	Elevator	Elevator	Elevator
3	Throttle	Motor	AUX6	Rudder	Rudder
4	Rudder	Rudder	Rudder	Aileron2	Aileron2
5	Gear	AUX5	AUX5	Flap	Aileron3
6	Aileron2	Aileron2	Aileron2	Flap2	Aileron4
7	Flap	Flap	Flap	Flap3	Flap
8	Flap2	Flap2	Flap2	Flap4	Flap2
VC1	Camber	Camber	Camber	Camber	Camber
VC2	AUX1	Butterfly	Butterfly	Butterfly	Butterfly
VC3	AUX1	AUX1	AUX1	AUX1	AUX1
VC4	AUX1	AUX1	AUX1	AUX1	AUX1

■ Flying wing

CH	2Aileron			2Aileron + 1Flap		
	Airplane	EP Glider	Glider	Airplane	EP Glider	Glider
1	Aileron	Aileron	Aileron	Aileron	Aileron	Aileron
2	Rudder2	Rudder2	Rudder2	Rudder2	Rudder2	Rudder2
3	Throttle	Motor	AUX1	Throttle	Motor	AUX7
4	Rudder	Rudder	Rudder	Rudder	Rudder	Rudder
5	Gear	AUX7	AUX7	Gear	AUX6	AUX6
6	Aileron2	Aileron2	Aileron2	Flap	Flap	Flap
7	AUX6	AUX6	AUX6	Aileron2	Aileron2	Aileron2
8	AUX5	AUX5	AUX5	AUX5	AUX5	AUX5
VC1	Elevator	Elevator	Elevator	Elevator	Elevator	Elevator
VC2	Camber	Camber	Camber	Camber	Camber	Camber
VC3	AUX1	AUX1	AUX1	AUX1	Butterfly	Butterfly
VC4	AUX1	AUX1	AUX1	AUX1	AUX1	AUX1

CH	2Aileron + 2Flap			2Aileron + 4Flap	4Aileron + 2Flap
	Airplane	EP Glider	Glider	Glider	Glider
1	Aileron	Aileron	Aileron	Aileron	Aileron
2	Rudder2	Rudder2	Rudder2	Aileron2	Aileron2
3	Throttle	Motor	AUX7	Rudder	Aileron3
4	Rudder	Rudder	Rudder	Rudder2	Aileron4
5	Gear	AUX6	AUX6	Flap	Rudder
6	Flap	Flap	Flap	Flap2	Rudder2
7	Aileron2	Aileron2	Aileron2	Flap3	Flap
8	Flap2	Flap2	Flap2	Flap4	Flap2
VC1	Elevator	Elevator	Elevator	Elevator	Elevator
VC2	Camber	Camber	Camber	Camber	Camber
VC3	AUX1	Butterfly	Butterfly	Butterfly	Butterfly
VC4	AUX1	AUX1	AUX1	AUX1	AUX1

■ Ailevator

CH	1Aileron			2Aileron			2Aileron + 1Flap		
	Airplane	EP Glider	Glider	Airplane	EP Glider	Glider	Airplane	EP Glider	Glider
1	Aileron	Aileron	Aileron	Aileron	Aileron	Aileron	Aileron	Aileron	Aileron
2	Elevator	Elevator	Elevator	Elevator	Elevator	Elevator	Elevator	Elevator	Elevator
3	Throttle	Motor	AUX1	Throttle	Motor	AUX1	Throttle	Motor	AUX7
4	Rudder	Rudder	Rudder	Rudder	Rudder	Rudder	Rudder	Rudder	Rudder
5	Gear	AUX7	AUX7	Gear	AUX7	AUX7	Gear	AUX6	AUX6
6	Airbrake	Airbrake	Airbrake	Aileron2	Aileron2	Aileron2	Flap	Flap	Flap
7	Elevator2	Elevator2	Elevator2	Elevator2	Elevator2	Elevator2	Aileron2	Aileron2	Aileron2
8	AUX5	AUX5	AUX5	AUX5	AUX5	AUX5	Elevator2	Elevator2	Elevator2
VC1	AUX1	AUX1	AUX1	Camber	Camber	Camber	Camber	Camber	Camber
VC2	AUX1	AUX1	AUX1	AUX1	Butterfly	Butterfly	AUX1	Butterfly	Butterfly
VC3	AUX1	AUX1	AUX1	AUX1	AUX1	AUX1	AUX1	AUX1	AUX1
VC4	AUX1	AUX1	AUX1	AUX1	AUX1	AUX1	AUX1	AUX1	AUX1

CH	2Aileron + 2Flap		
	Airplane	EP Glider	Glider
1	Aileron	Aileron	Aileron
2	Elevator	Elevator	Elevator
3	Throttle	Motor	AUX6
4	Rudder	Rudder	Rudder
5	Elevator2	Elevator2	Elevator2
6	Aileron2	Aileron2	Aileron2
7	Flap	Flap	Flap
8	Flap2	Flap2	Flap2
VC1	Camber	Camber	Camber
VC2	AUX1	Butterfly	Butterfly
VC3	AUX1	AUX1	AUX1
VC4	AUX1	AUX1	AUX1

■ Helicopter

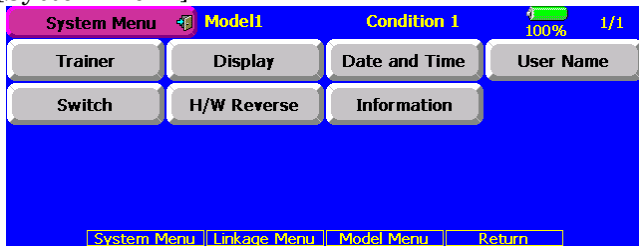
CH	H-1,H-2,HE3,HR3,HN3,H-3	H4,H-4X
1	Aileron	Aileron
2	Elevator	Elevator
3	Throttle	Throttle
4	Rudder	Rudder
5	Gyro	Gyro
6	Pitch	Pitch
7	Governor	Governor
8	Needle	Elevator2
VC1	AUX1	AUX1
VC2	AUX1	AUX1
VC3	AUX1	AUX1
VC4	AUX1	AUX1

(Update Modification Contents in the past)

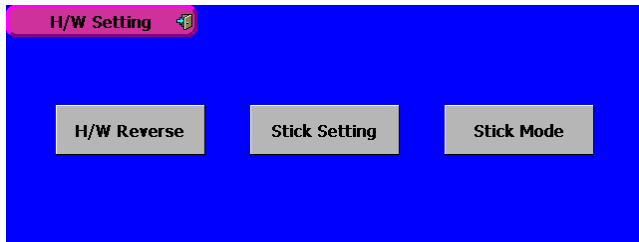
Hardware setting

This function is for adjusting the sticks, switches and trim characteristics.

[System menu]



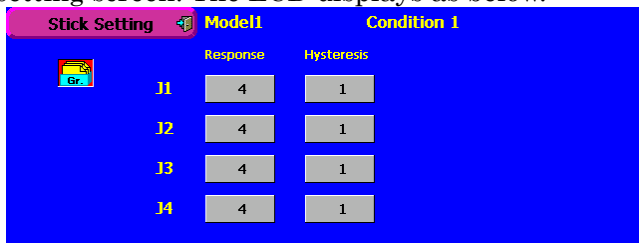
Push the “Hardware setting” button on the system menu. The LCD displays as below. The hardware reverse function is the same as before.



Stick setting

This function adjusts the stick’s response and hysteresis (null control). You can set your favorite control feeling on each flight condition.

Push the “stick setting” button on the hardware setting screen. The LCD displays as below.



Adjusting the stick response

1. Push the response button for either stick you want to adjust. The rate adjustment button appears.
2. Adjust the stick response by pushing the rate button.

Default: 4

Adjusting ranges: 1-32 (the greater value produces response)

Adjusting the hysteresis

1. Push the hysteresis button either stick you want to adjust. The rate adjustment button appears.
2. Adjust the hysteresis by pushing the rate button.

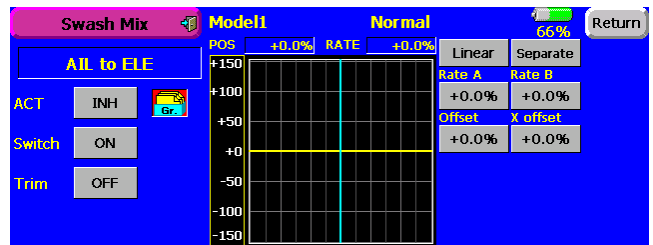
Default: 1

Adjusting ranges: 0-32 (the greater value is to be more hysteresis)

Push the “stick setting” button after finished the setting.

Swash mixing (Heli mixing)

The trim selection button is added.



■ Trim on /off setting

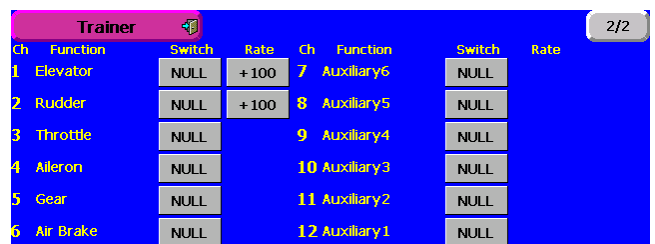
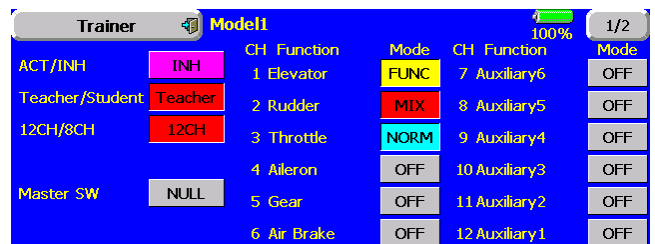
You can select mixing characteristics either with trim or without trim.

Changes the operation with model changes and frequency changes

The current software requires turning off the power switch when the model is changed or frequency is changed. The new version software moves to the confirmation screen of the radio after that operation. You will not be required to turn off the power switch as often, and continuous operation is available.

Trainer

- Setting data are stored to model data.
- Student rate can be adjusted at MIX and FUNC mode.
- Activated student channels can be selected by switches.



Set the trainer mode to either MIX or FUNC mode. The rate buttons appear on the 2nd page of the trainer screen. Set the student rate as desired.

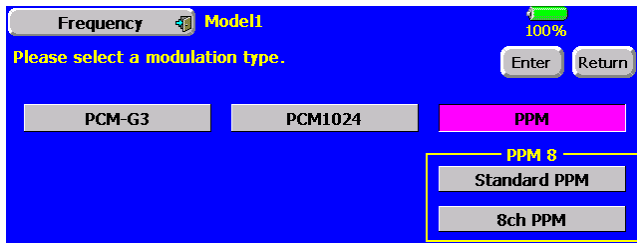
Push the switch button and select the desired switch.

Model select

Back to start-up screen when the model is changed
Back to start-up screen when new model is added.

PPM modulation

Added the modulation polarity selection at PPM mode. Added 12 channels PPM mode.



The additional dialog box appears when the PPM modulation is set. Push the upper side button to select the PPM polarity. The Standard PPM corresponds to FUTABA receivers. Push lower side button to select the PPM channels. There are 3 kinds of selections, 8ch PPM, 12ch PPM (N 1.5), 12ch PPM (N 1.3). N means neutral pulse width

PCM1024 10ch mode

Added 10th channel of the PCM1024 mode. The DG2 button is added on the function menu at the PCM1024 mode. It is 10th channel control selection.

PMIX

Added the timer mode on the offset PMIX mode. The on time can be set up to 9 seconds. It is useful for landing gear control of a Jet or scale plane, etc

Slave	Mode	ON	Offset	OFF	H/W	Fine Mode	Rate	IN	Speed	OUT	Duration/Start	Stop
1	Aileron	ON	+0.0%	+0.0%	NULL		+0%	+0	+0	+0	0.0s	0.0s
2	Aileron	OFF	+0.0%	+0.0%	NULL		+0%	+0	+0	+0	0.0s	0.0s
3	Aileron	OFF	+0.0%	+0.0%	NULL		+0%	+0	+0	+0	0.0s	0.0s
4	Aileron	OFF	+0.0%	+0.0%	NULL		+0%	+0	+0	+0	0.0s	0.0s

- Expanded the delay time to 9 seconds (all PMIX).
- Added the ALT switching mode on mixing on/off control (all PMIX).

Speed and condition delay time

Adjusting values are increased to 0-27. The delay time is doubled to 26 and four times to 27 compared to 25. The 0-25 delay times are unchanged. Some Jet pilot asked to extend the delay time for engine starting up.

Fine-tuning aileron differential and butterfly differential

- Both up and down moving rate are adjusted simultaneously. When you increase the up side, the down side is decreased.
- The butterfly differential fine tune rate is increased to 0-120 %.

Flap trim

The flap-flap4 trim can be set and activated individually on the function menu.

Condition delay of the camber and butterfly

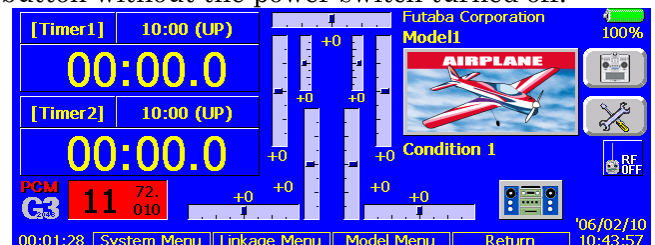
The condition delay button of the camber and butterfly on the condition menu are eliminated. They can be set by the camber mix and butterfly mix menu alternately

Idle down

The amount of the servo travel is double. The rate adjustment range is the same as 0-100 %. The rate data is automatically changed to a half when the update is done so that the servo travel should be same as before setting

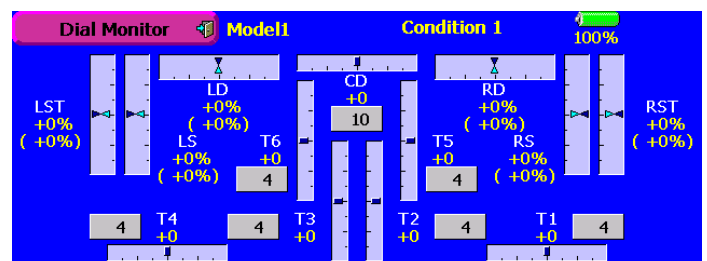
RF power on/off

The RF-off button is added on the home screen at the RF is not activated condition. You can go back to the RF on/off selection screen to push the RF-off button without the power switch turned off.



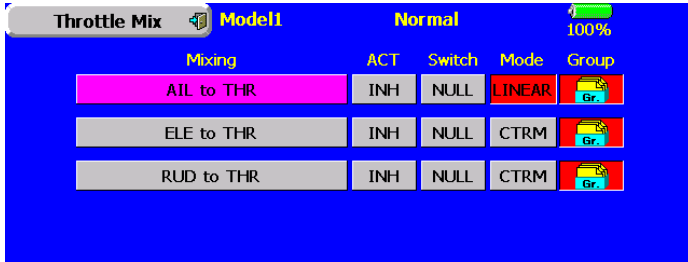
Dial monitor

The trim step of the T1-T6 (T1-T8 for FX-40) and CD can be set directly on the dial monitor menu.

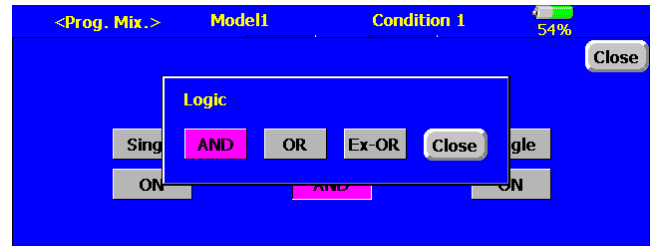


Throttle mixing on Helicopter mode

The linear and CTRM working mode are added. The current one has only CTRM mode (the mixing rate is reduced by the throttle stick high and low position). The linear mode gives constant mixing rate to all the throttle stick ranges



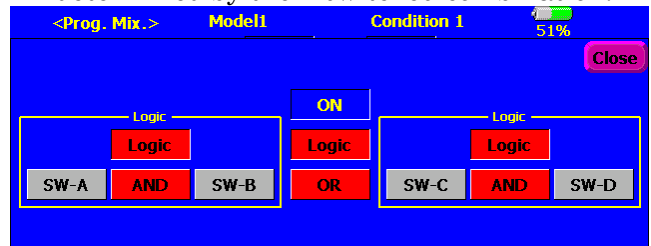
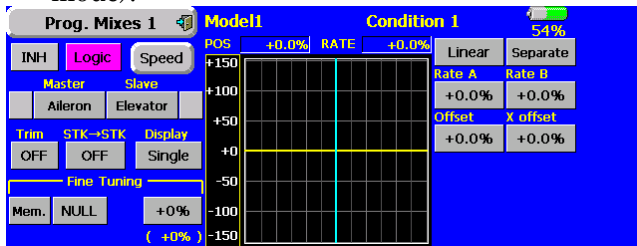
SWITCH		LOGIC		
SW1	SW2	AND	OR	Ex-OR
off	off	off	off	off
off	on	off	on	on
on	off	off	on	on
on	on	on	on	off



Logic switch

- The Logic switch can activate functions by some switches combination. Can be set up to 4 switch combinations.
- The Logic switch can be assigned to the mixing function as well as the flight condition select (except for Snap roll function on airplane mode).

5. The left and right side of the switch mode can be set to the logic switch mode as well. In this case, a maximum of 4 switches can be assigned to the logic switch. The left and right logic are calculated first, then the center of the logic is calculated. Finally, switch on/off status determined by the 4 switches' combination.



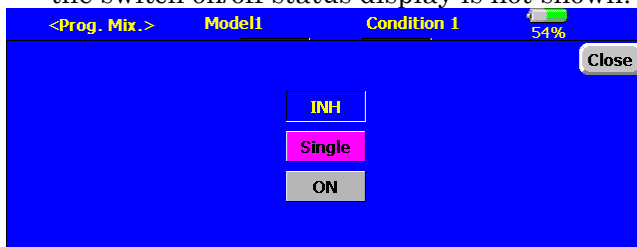
Directions

1. Push the switch selection button.
2. The switch selection screen appears and displays the status.
- In case of the flight condition select, the top of the switch on/off status display is not shown.

- In the above case, the SW-A and SW-B are calculated by AND logic. Next the SW-C and SW-D are calculated as same way. Finally the first case and 2nd case are calculated by OR logic.

Caution

1. The maximum number of the logic switch is 10 for the flight condition select and 8 for the mixing on/off selection on each flight condition. The error message will appear when the exceeded logic switch is going to be selected. In this case, delete the unused logic switch first, then select the new logic switch.
2. The mixing on/off switch modes are automatically assigned by single mode, not supported the group mode.



The display of the mixing on/off switch selection

3. The switch mode display is changed by pushing the switch mode button. The switch selection button is changed to the logic equation button by selecting the logic switch mode. At the logic switch mode, the switch selection buttons appear on both the left and right side of the display.

4. The logic selection dialogue appears when you push the logic mode button. The 3 types of logic, either AND, OR or EX-OR, can be selected.

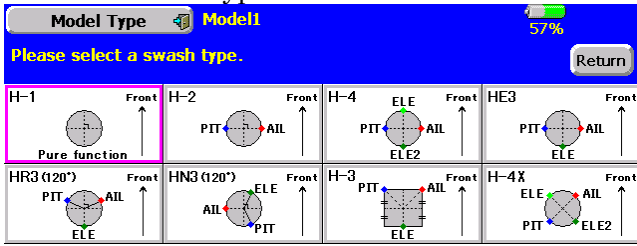
Sound playback

The repeating mode is added on the sound playback. When you select the playback mode button's repeat mode (⌂), the selected sound is playback repeatedly while the switch is on.

No	Switch Mode	File	Rec No	Switch Mode	File	Rec
1	Start up		7	OFF		
2	Power off		8	OFF		
3	SW-A		9	OFF		
4	OFF		10	OFF		
5	OFF		11	OFF		
6	OFF		12	OFF		

Model type

The H-4X model type is added to the heli mode.



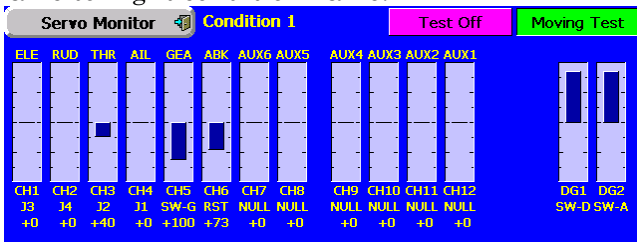
- The H-4X mode turns the swash plate to 45 degree from H-4 swash. It is familiar for big scale heli. Currently, H-4 mode and using the swash mixing makes the operation. Using the H-4X, no swash mixing is needed (must be inhibited the swash mixing). The linkage compensation on the swash detail setting is also available with H-4X mode.

Motor mixing

The motor mixing is added to the Airplane mode. The warning message is appears when the mixing is on status at the power on for safety.

Servo monitor

The display of the servo monitor is added to the function control name and changed from model name to flight condition name.

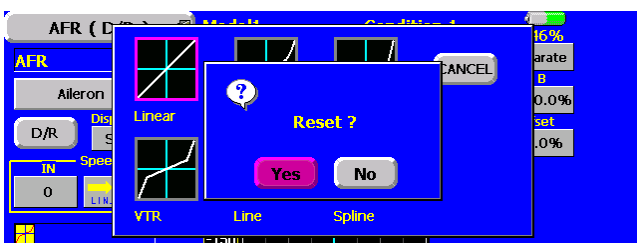


Curve mode

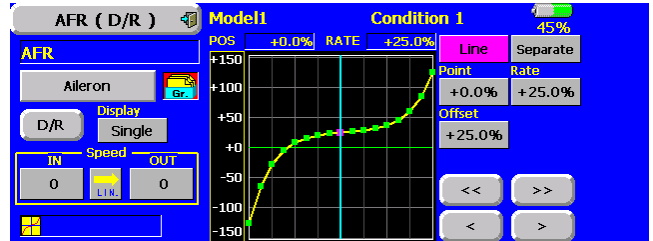
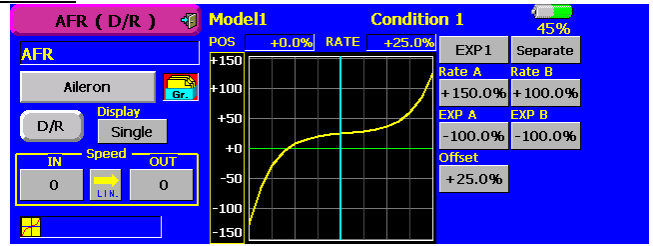
The curve shape is inherited when the curve mode is changed.

Changed to line or spline mode, the curve is retrieved as 17 points curve. The Rate A and Rate B are inherited on the linear, EXP1, EXP2 and VTR. Other data except Rate A and Rate B are retrieved from the previous setting data when changing the curve mode.

At the curve mode changes, the dialogue box asks whether the current curve is reset or inherited. The default curve is used when selecting the Yes button on the confirmation dialogue.

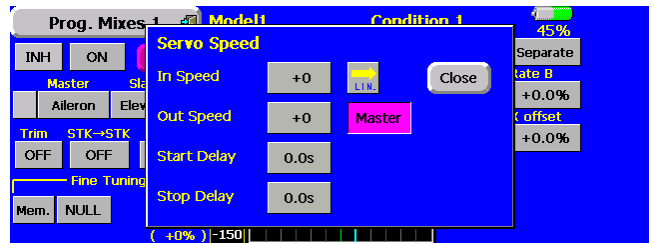


Example. Changes from EXP1 to Linear curve mode.



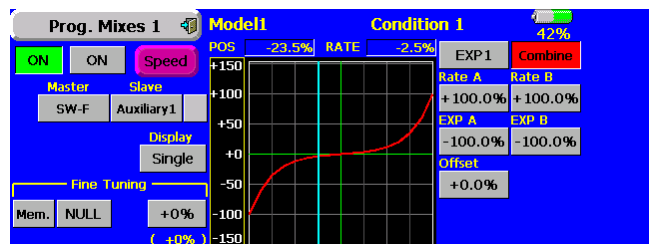
Programmable mixing

The speed mode selection is added on the programmable mixing. The slave mode works same as current speed function. The master mode is a new feature. The servo movement is traced by the setting curve at the master mode. The trace speed is adjusted by in and out speed same as before.



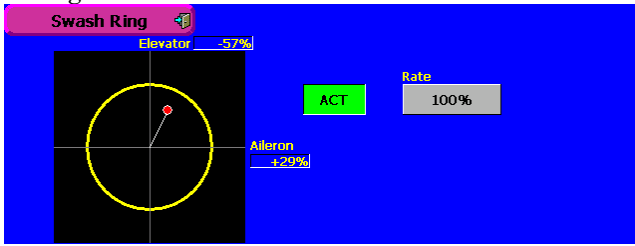
Directions

- Select the programmable mixing to curve mode and push the speed button.
- Push the speed mode button to master mode.
- Set desired in and out speed
- Select the master channel to any toggle switch.
- The slave channel's servo traces the setting curve as the master toggle switch is moved. Below the case, AUX1 servo traces the setting curve as the SW-F is operated.



Swash ring

This function limits the decline of the swash plate to prevent linkage damage as the aileron and elevator operation is added. It is useful for 3D heli setting.

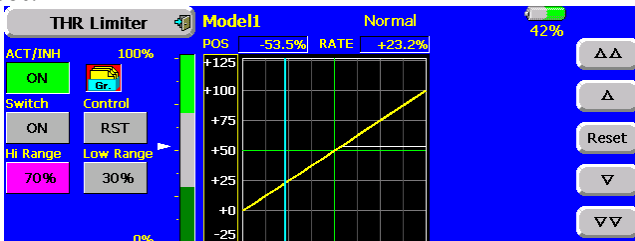


Directions

1. Push the Swash ring button on the linkage menu.
2. Push ACT/INH button to activate. The movement area monitor shows the current aileron and elevator values and limit ranges by the yellow circle.
3. Adjust the rate to the maximum amount of swash plate decline. The swash movement is limited within the circle. The rate adjustment range is 50~200%.

Throttle limiter

This function limits the high range of the throttle movement by any slider or trimmer. The adjustment range of the high and low end can be set.

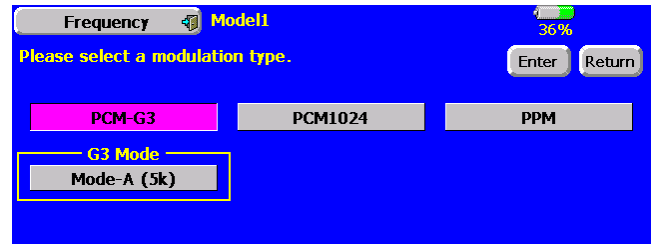


Directions

1. Push the Throttle limiter button on the model menu.
2. Activate the mixing and select the on/off switch.
3. Select the control for adjustment of the high limit.
4. Set the high range. The range gauge shows the setting position.
5. Set the low range same as high range setting.

PCM-G3 communication mode

Two PCM-G3 communication modes are added. The Mode-A is a current communication mode. Mode-B is a new one. The Mode-B is a more reliable communication mode than the Mode-A but the servo response is a little bit slower. Please choose either mode as required by your airfield.



Directions

1. Open the frequency setting menu on the linkage menu.
2. Push modulation mode button to PCM-G3 mode.
3. Select either Mode-A or Mode-B and push the Enter button.
4. The confirmation screen appears. Push yes button to activate the setting.

Caution

1. The receiver must correspond to Mode-B. (R5014DPS does not support the Mode-B).
2. The servo response is about 20% slower than the Mode-A.