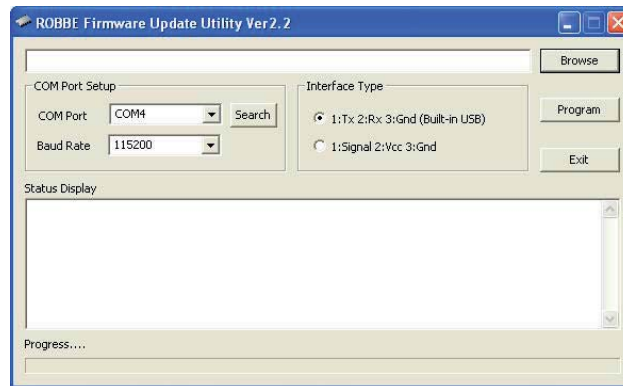


UPDATEANLEITUNG

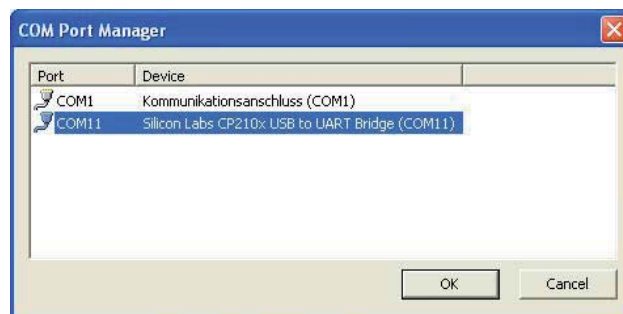
Für die Sprachinstallation Englisch, Italienisch und Spanisch“ den Ordner „ENGLISH, ITALIANO, ESPANOL“ auf den Desktop kopieren.

Den Ordner „FIRMWARE UPGRADE“ öffnen und die Datei „ROBBE_PC_PROGRAMM_VER2.2.exe“ starten.

1. USB Kabel an Lader und PC anschliessen. Im Feld COM PORT „SEARCH“ anklicken.



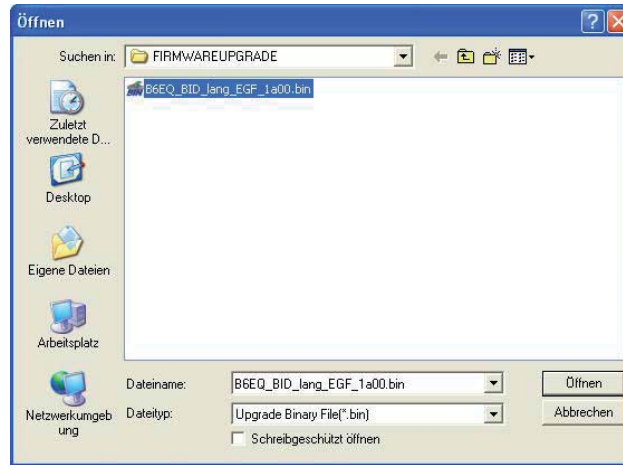
2. Treiber „Silicon Labs CP210x USB to UART Bridge“ auswählen und mit „OK“ bestätigen .
Hinweis: Die COM-PORT Nummer kann je nach PC variieren.



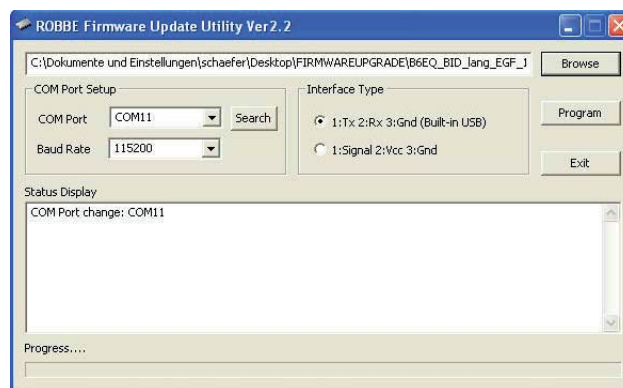
3. Nun das „BROWSE“ Feld anklicken.



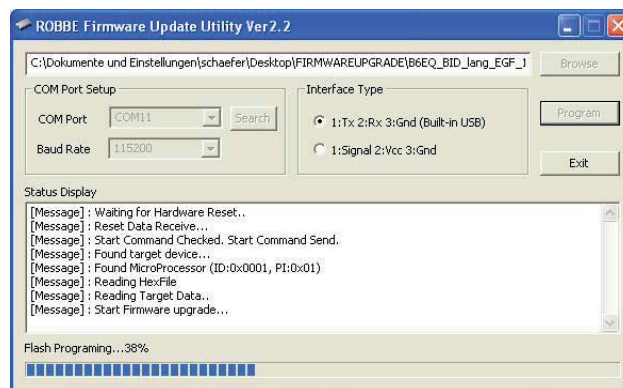
4. Gewünschtes Update auswählen und auf „ÖFFNEN“ klicken.



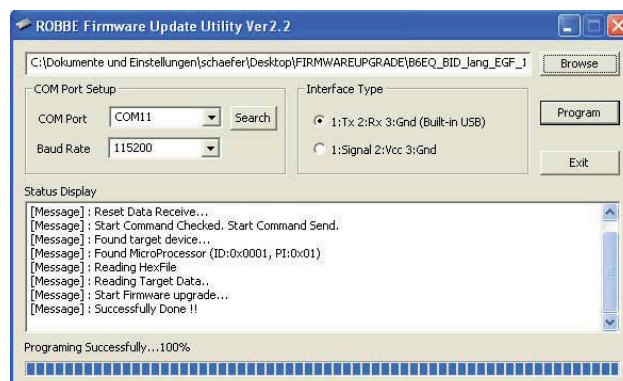
5. Der Pfad wird nun in der oberen Zeile eingeblendet. „PROGRAM“ anklicken und **danach** Spannungsversorgung zum Lader herstellen (zeitlich begrenzt).



6. Update wird ausgeführt. Der Fortschritt wird angezeigt.



7. Update abgeschlossen. Mit „EXIT“ Programm verlassen.

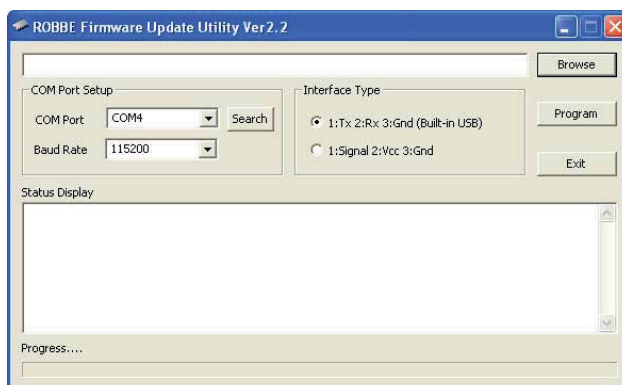


UPDATE INSTRUCTIONS

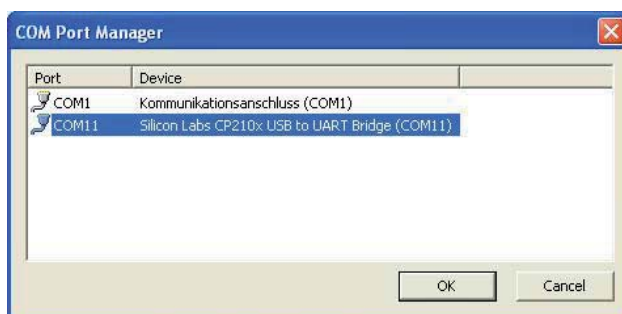
Copy the „ENGLISH, ITALIANO, ESPANOL“ folder to the desktop for the language installation English, Italian and Spanish

Open the „FIRMWARE UPGRADE“ folder and run the file „ROBBE_PC_PROGRAMM_VER2.2.exe“.

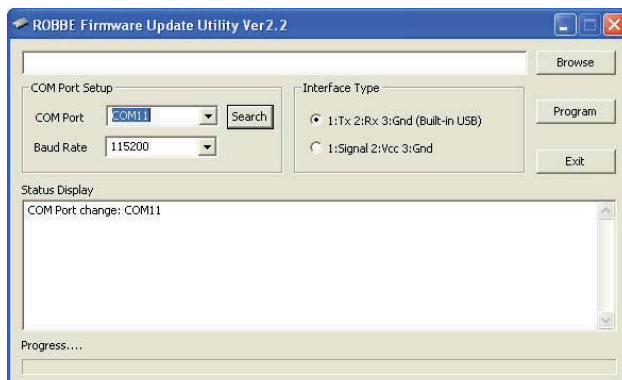
1. CONNECT USB CABLE TO CHARGER AND PC. CLICK ON „SEARCH“ IN COM PORT FIELD.



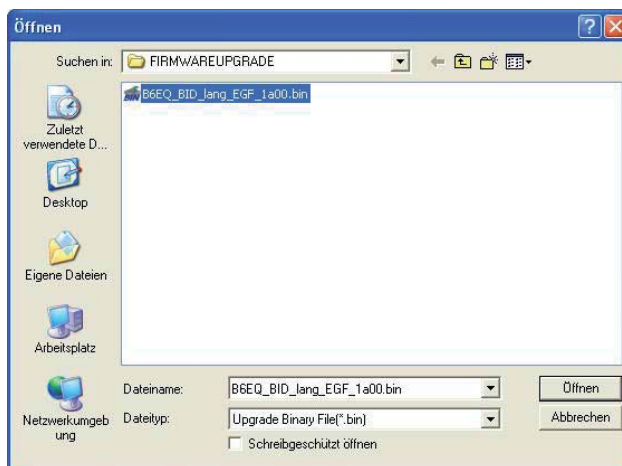
2. SELECT DRIVER „SILICON LABS CP210X USB TO UART BRIDGE“ AND CLICK ON „OK“ TO CONFIRM. NOTE: THE COM PORT NUMBER CAN VARY DEPENDING ON THE PC.



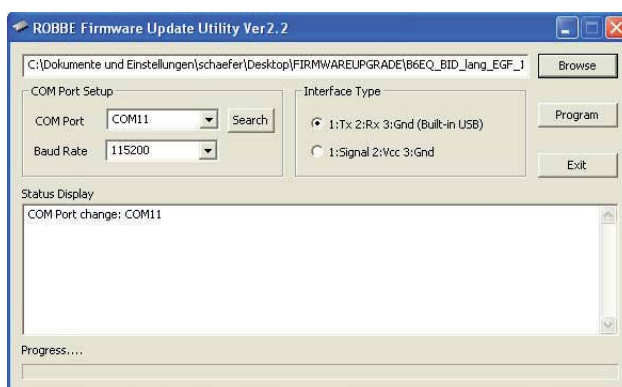
3. NOW CLICK ON THE „BROWSE“ BUTTON.



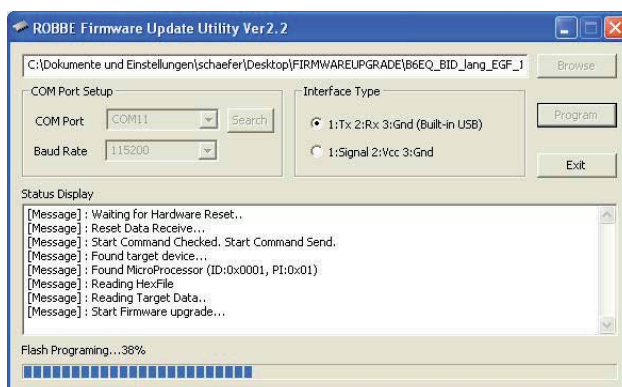
4. SELECT REQUIRED UPDATE AND CLICK ON „OPEN“.



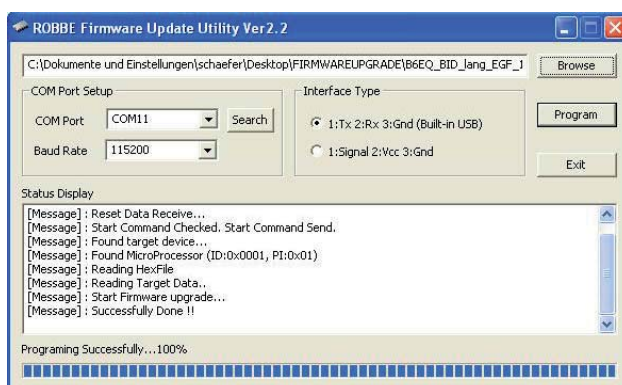
5. THE PATH IS NOW SHOWN IN THE TOP LINE. CLICK ON „PROGRAM“ AND THEN SET UP VOLTAGE SUPPLY TO THE CHARGER (TIME LIMIT).



6. THE UPDATE IS INSTALLED. PROGRESS IS SHOWN.



7. UPDATE FINISHED. EXIT PROGRAM BY CLICKING ON „EXIT“.

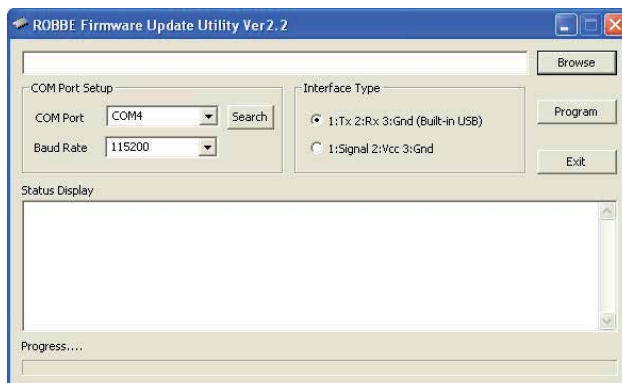


INSTRUCTIONS DE MISE A JOUR

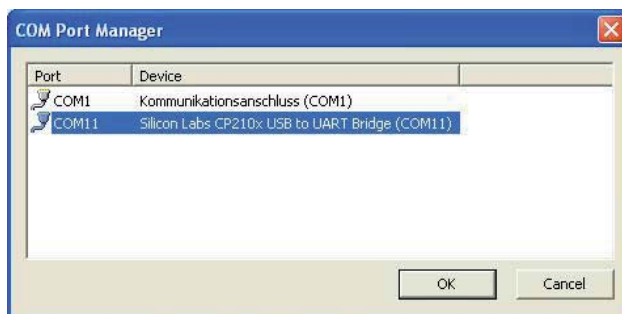
Pour l'installation en anglais, italien et espagnol, copier le dossier „ENGLISH, ITALIANO, ESPAGNOL“ sur le bureau.

Ouvrir le dossier „FIRMWARE UPGRADE“ et démarrer l'application „ROBBE PC PROGRAMM VER 2. exe“.

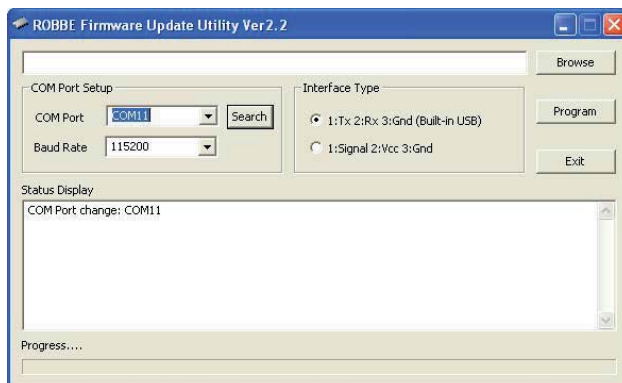
1. RELIER LE CHARGEUR AU PC À L'AIDE DU CORDON USB. CLIQUER SUR „SEARCH“ DANS LE CHAMP COM PORT.



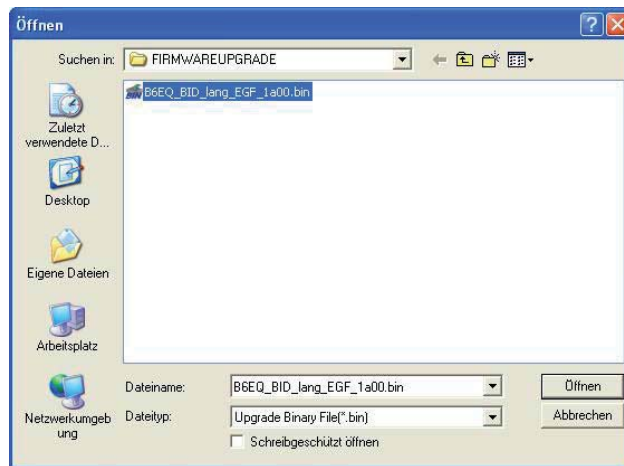
2. SÉLECTIONNER LE DRIVER „SILICON LABS CP210X USB TO UART BRIDGE“, PUIS VALIDER PAR „OK“ NOTEZ BIEN : LE NUMÉRO COM-PORT PEUT VARIER SUIVANT LE PC.



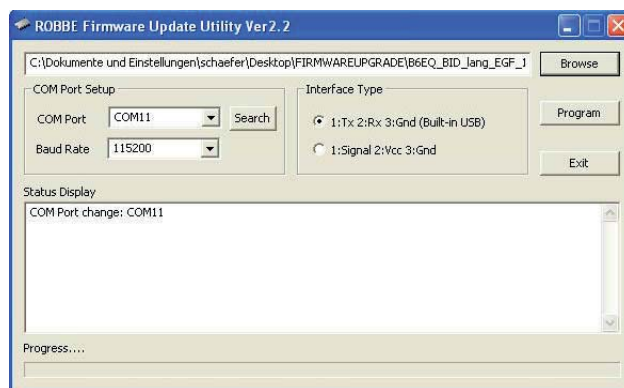
3. CLIQUEZ MAINTENANT LE CHAMP „BROWSE“.



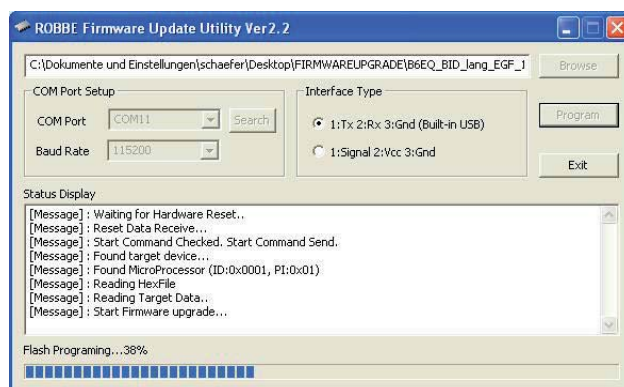
4. SÉLECTIONNER L'UPDATE SOUHAITÉ ET CLIQUEZ SUR „OUVRIR“



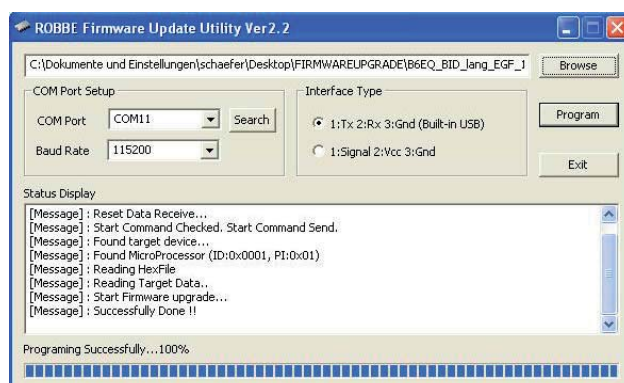
5. LE CHEMIN S'AFFICHE MAINTENANT DANS LA LIGNE DU HAUT. CLIQUER SUR „PROGRAM“ ET DÉFINIR LA TENSION D'ALIMENTATION DU CHARGEUR (LIMITÉ DANS LE TEMPS).



6. LA MISE À JOUR EST EFFECTUÉE. L'AVANCEMENT EST AFFICHÉ.



7. LA MISE À JOUR EST TERMINÉE. QUITTER LE PROGRAMME AVEC „EXIT“.

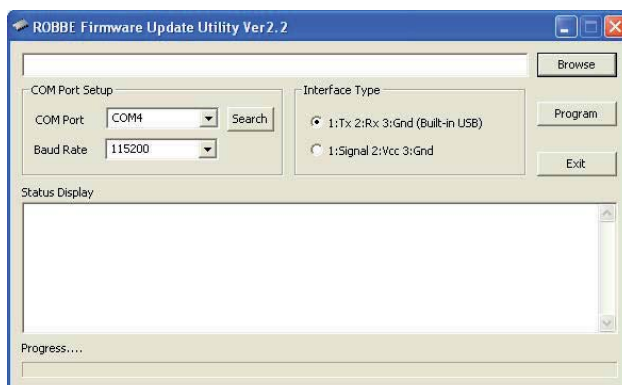


ISTRUZIONI PER L'AGGIORNAMENTO

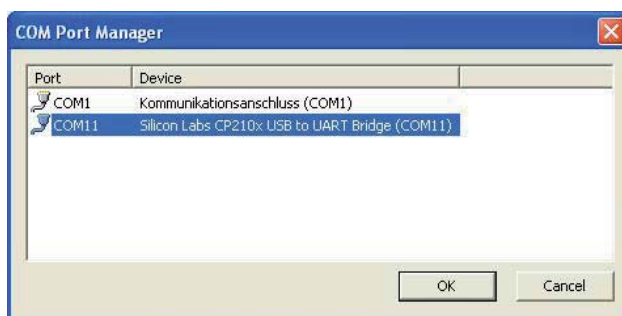
Per la selezione della lingua inglese, italiana e spagnola, copiare sul desktop la cartella „ENGLISH, ITALIANO, ESPANOL“.

Aprire la cartella „FIRMWARE UPGRADE“ e lanciare il file „ROBBE_PC_PROGRAMM_VER2.2.exe“.

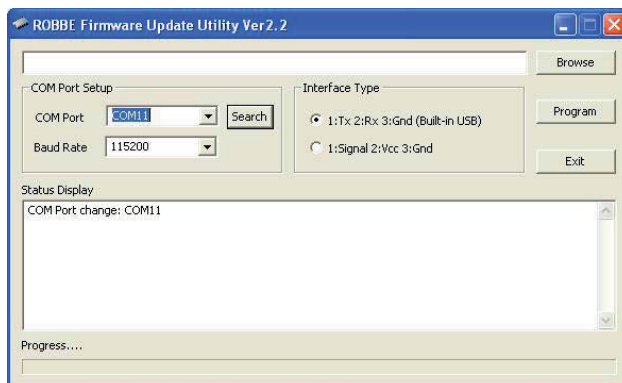
1. Mediante il cavo USB collegare il caricabatterie al PC. Cliccare „SEARCH“ nel campo COM PORT.



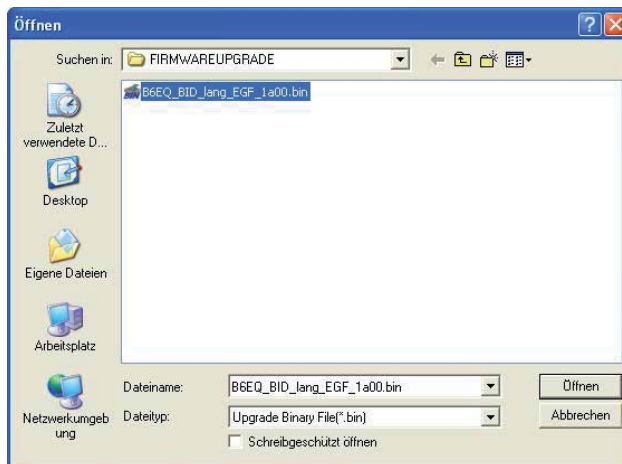
2. Selezionare il driver „Silicon Labs CP210x USB to UART Bridge“ e confermare con „OK“. Avvertenze: il numero COM-PORT può variare in base a ogni PC.



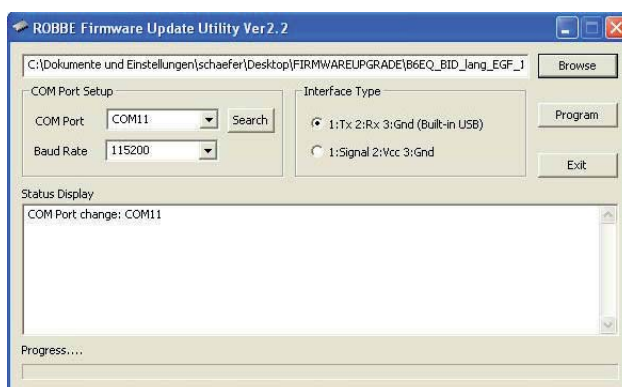
3. Cliccare sul campo „BROWSE“.



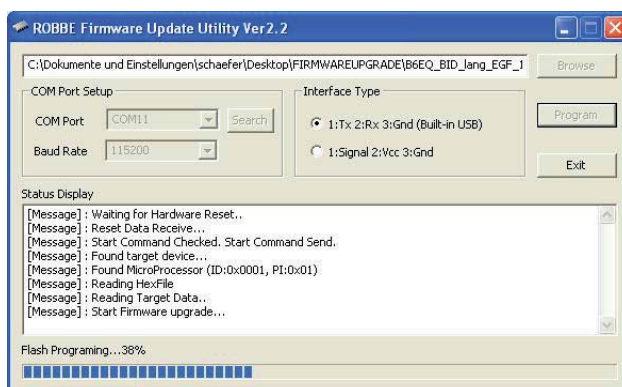
4. Selezionare l'aggiornamento desiderato e cliccare su „ÖFFNEN“.



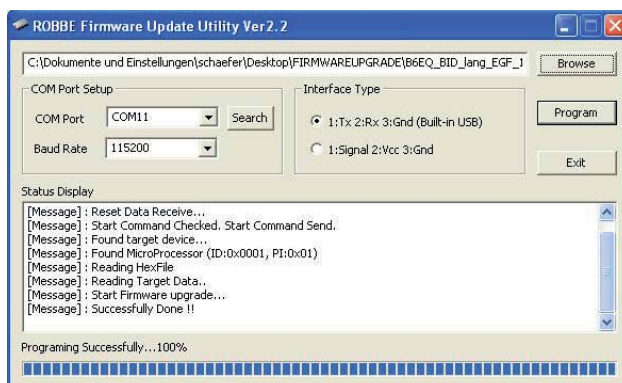
5. Il percorso appare sulla riga in alto. **Cliccare su “PROGRAM”** e a procedura già avviata alimentare il **POWER PEAK B6 EQ-BID (12V o 220Vca con alimentatore)**.



6. . La procedura d'aggiornamento avrà inizio visualizzando lo stato d'avanzamento.



7. Terminata la procedura di aggiornamento, uscire dal programma cliccando „EXIT“.

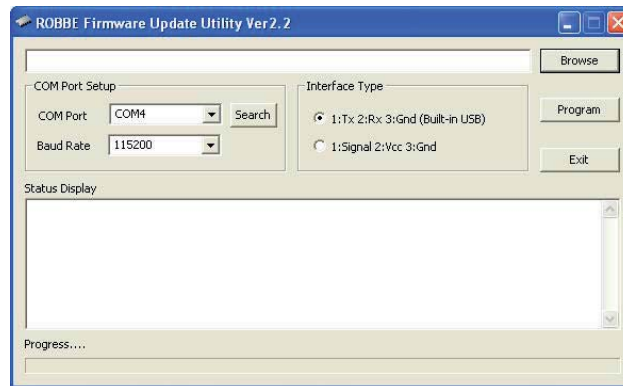


INSTRUCCIONES PARA LA ACTUALIZACIÓN

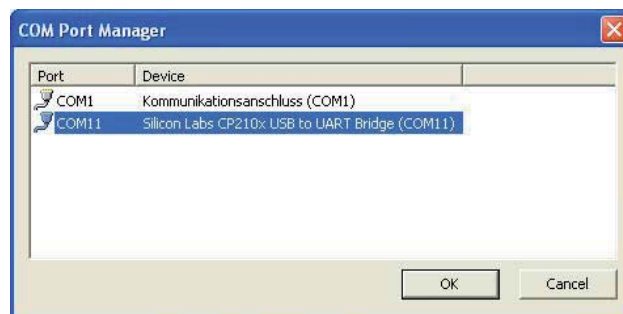
Para instalar los idiomas inglés, italiano y español copie en el escritorio la carpeta „ENGLISH, ITALIANO, ESPAÑOL“.

Abra la carpeta „FIRMWARE UPGRADE“ e inicie el archivo „ROBBE_PC_PROGRAMM_VER2.2.exe“.

1. Enchufe el cable USB en el cargador y el PC. Pulse „SEARCH“ en el campo COM PORT.



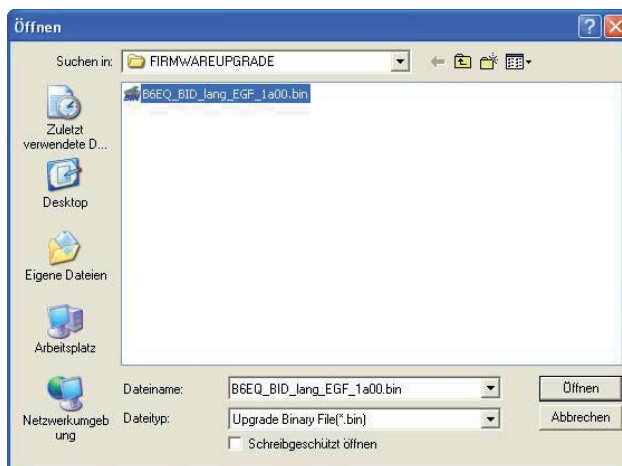
2. Seleccione el controlador „Silicon Labs CP210x USB to UART Bridge“ y confirme con „OK“.
Nota: el número del COM-PORT puede variar de un ordenador a otro.



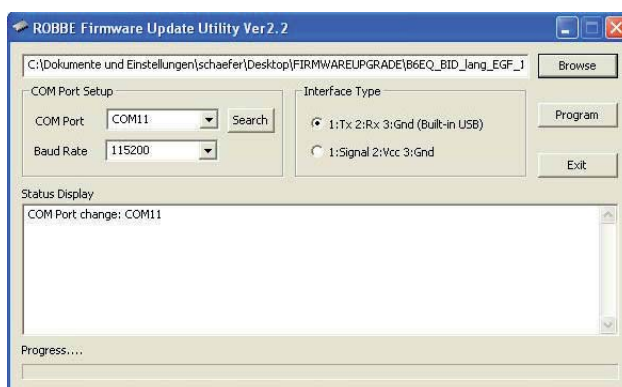
3. Haga clic ahora en el campo „BROWSE“.



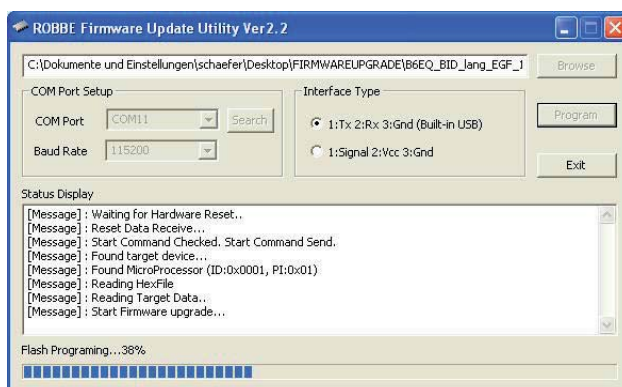
4. Seleccione la actualización deseada y pulse „ÖFFNEN“ (ABRIR).



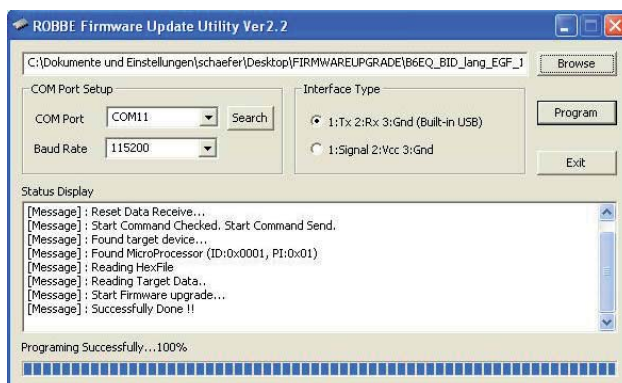
5. La ruta aparece ahora en la línea superior. Pulse „PROGRAM“ y conecte el suministro de tensión para el cargador (limitado temporalmente).



6. A continuación se ejecuta la actualización, mostrándose su avance.



7. Actualización concluida. Salga del programa con „EXIT“.

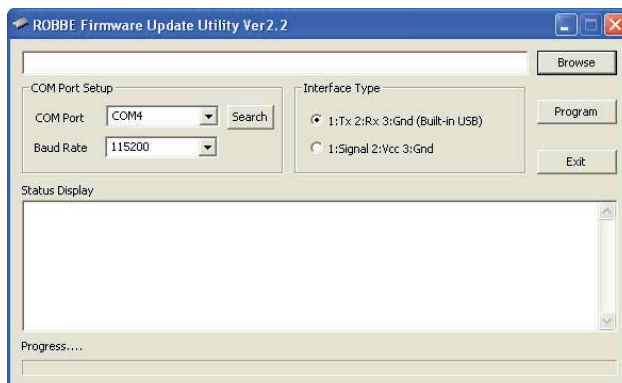


NÁVOD PRO UPDATE

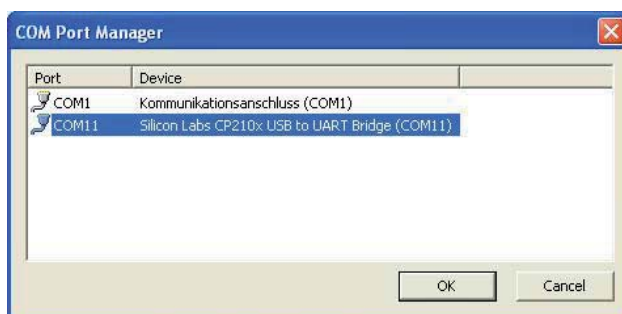
Pro instalaci angličtiny, italštiny a španělštiny zkopírujte složku „ENGLISH, ITALIANO, ESPANOL“ na počítač.

Otevřete složku „FIRMWARE UPGRADE“ a spusťte soubor „ROBBE_PC_PROGRAMM_VER2.2.exe“.

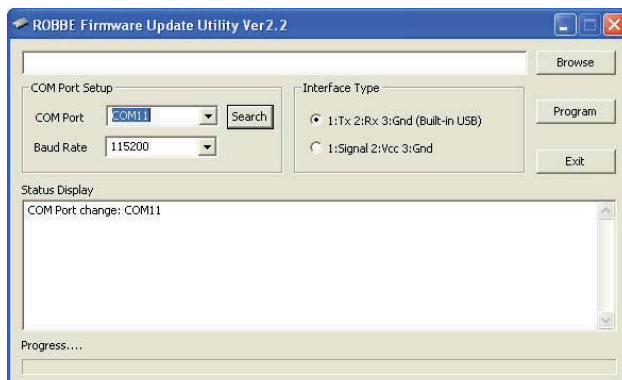
1. Připojte USB kabel k nabíječce a PC. V poli COM PORT klikněte na „SEARCH“.



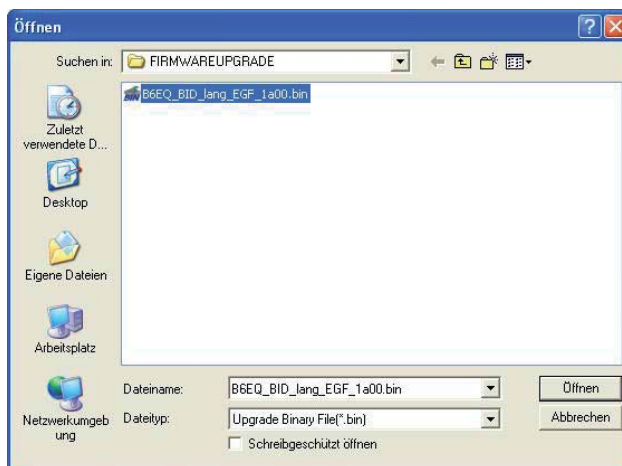
2. Vyberte ovladač „Silicon Labs CP210x USB to UART Bridge“ a potvrďte pomocí „OK“. Upozornění: Číslo COM-PORT může být různé v závislosti na počítači.



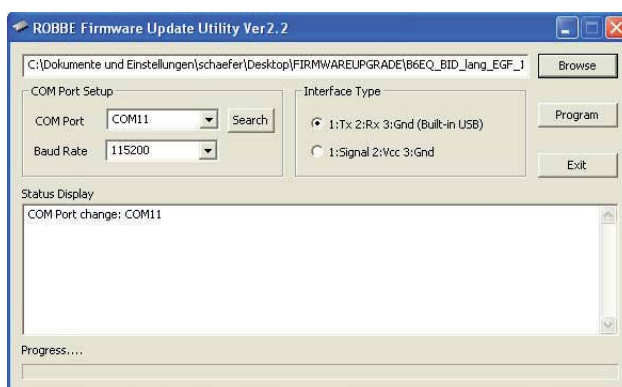
3. Nyní klikněte na políčko „BROWSE“.



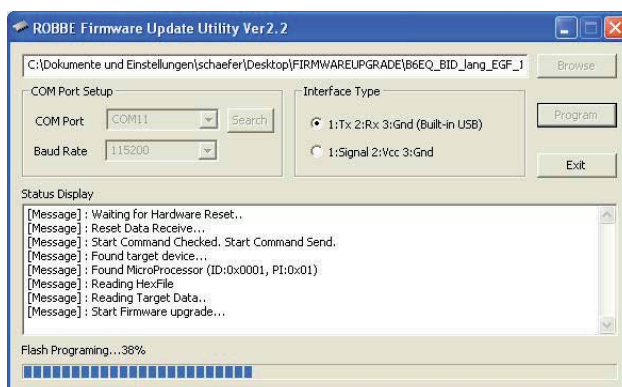
4. Vyberte požadovaný update a klikněte na „ÖFFNEN“ (OTEVŘÍT).



5. Cesta se nyní objeví nahorní řádce. Klikněte na „PROGRAM“ a připojte napětí k nabíječce (časově omezeno).



6. Update se provede. Zobrazí se stav průběhu.



7. Update je ukončen. Pomocí „EXIT“ ukončete program.

