

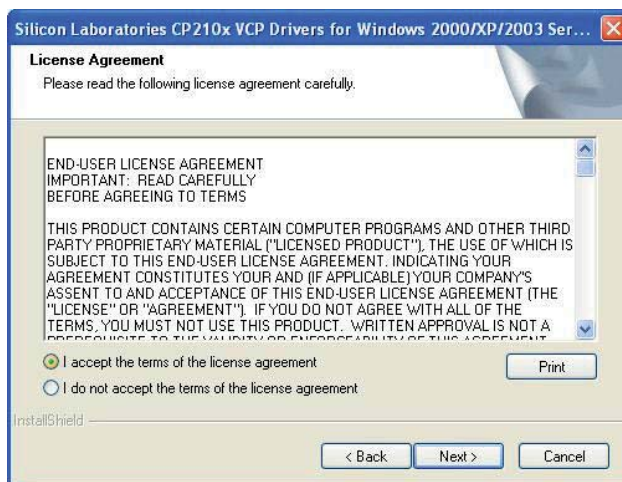
## USB TREIBERINSTALLATION

**Hinweis: Die USB Treiberinstallation ist zwingend notwendig, wenn ein Sprach Update durchgeführt werden soll. Ebenso ist dieser Treiber bei der Nutzung von Logview erforderlich.**

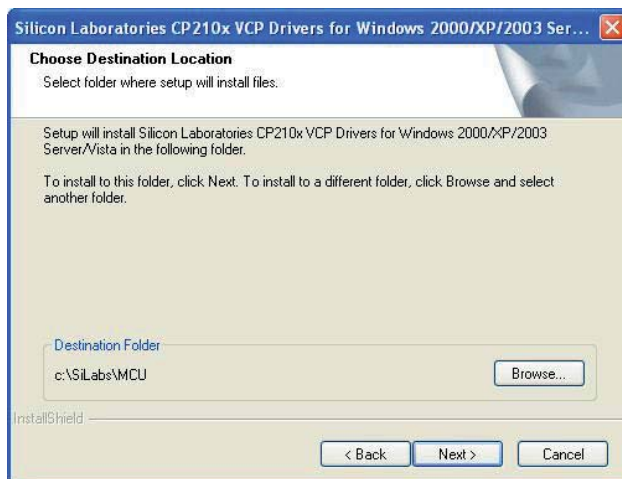
1. Den Ordner „USB DRIVER“ auf der CD öffnen und die Datei „CP210x\_VCP\_Win2K\_XP\_S2K3.exe“ starten. Folgendes Bild wird angezeigt. Drücken Sie „NEXT“.



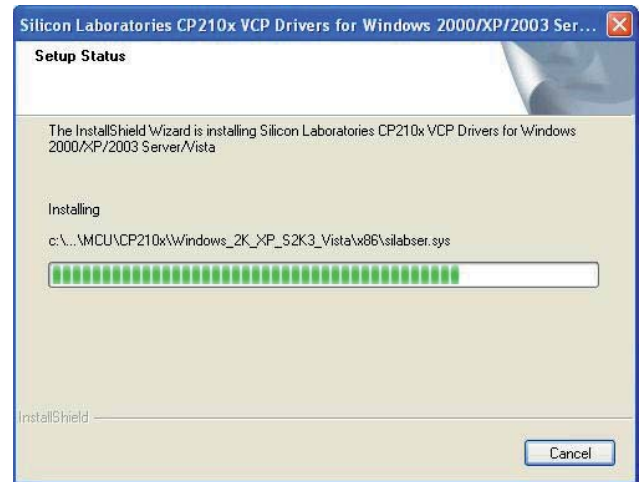
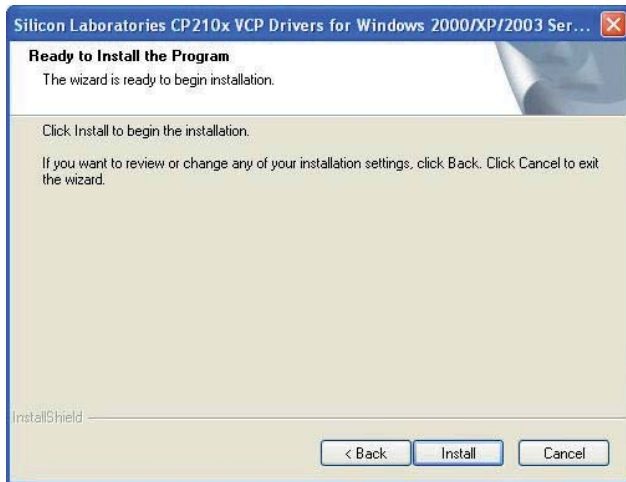
2. „I accept the terms of the license agreement“ auswählen und auf „NEXT“ klicken.



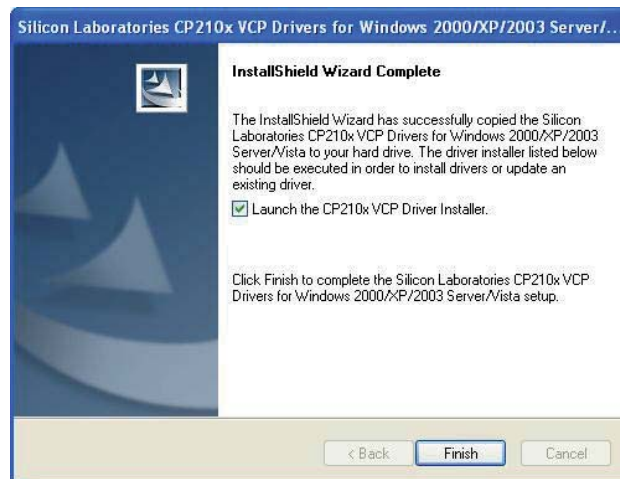
3. Drücken Sie „NEXT“.



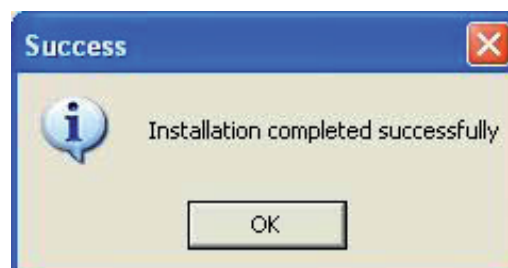
4. Drücken Sie „INSTALL“.



5. Die Treiber installation ist abgeschlossen. Feld „Launch the CP210x VCP Driver Installer“ auswählen und auf „FINISH“ klicken.



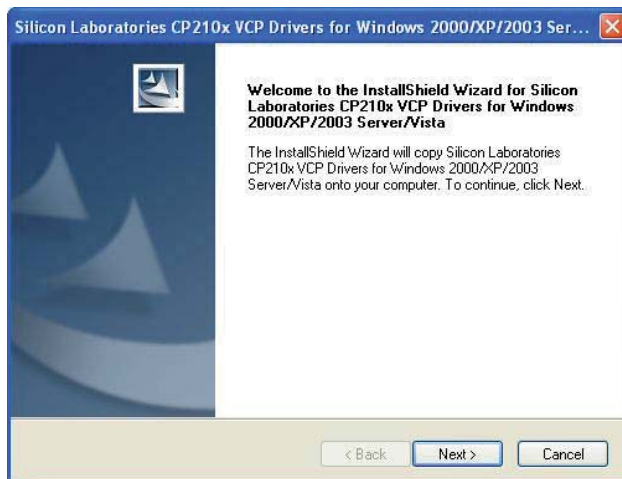
6. „INSTALL“ drücken.



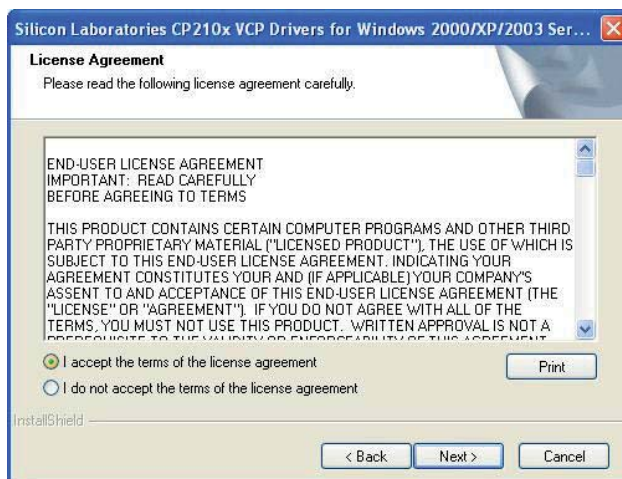
## USB DRIVER INSTALLATION

**NOTE: THE USB DRIVER MUST BE INSTALLED FOR THE PURPOSE OF CARRYING OUT A LANGUAGE UPDATE. THIS DRIVER IS ALSO REQUIRED FOR USING LOGVIEW.**

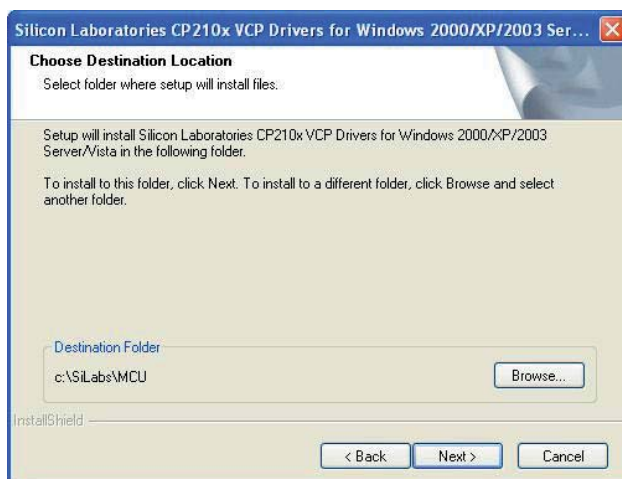
1. Open the „USB DRIVER“ folder on the CD and run the file „CP210x\_VCP\_Win2K\_XP\_S2K3.exe“. The following screen is shown. Click on „NEXT“.



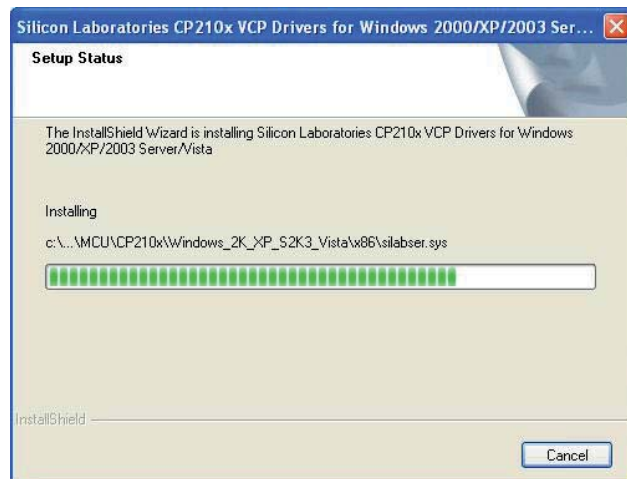
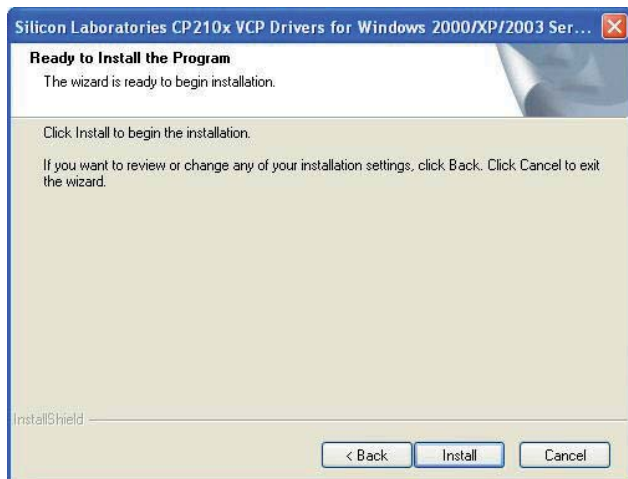
2. Select „I accept the terms of the license agreement“ and click on „NEXT“.



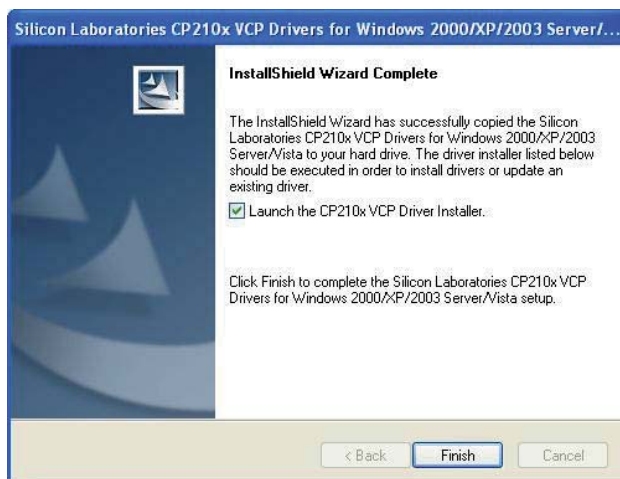
3. Click on „NEXT“.



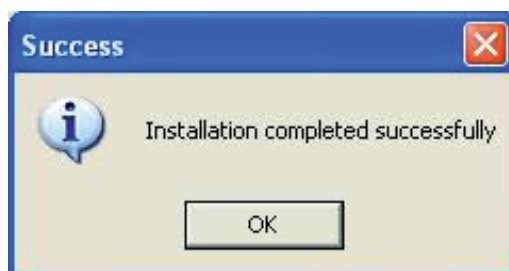
4. Click on „INSTALL“.



5. Driver installation is finished. Check „Launch the CP210x VCP Driver Installer“ box and click on „FINISH“.



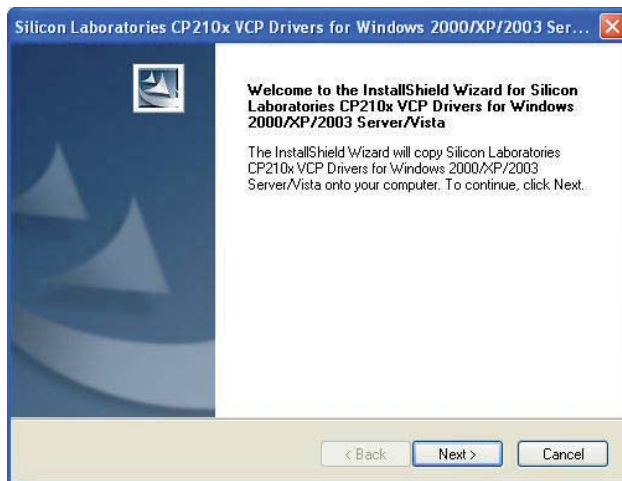
6. Click on „INSTALL“.



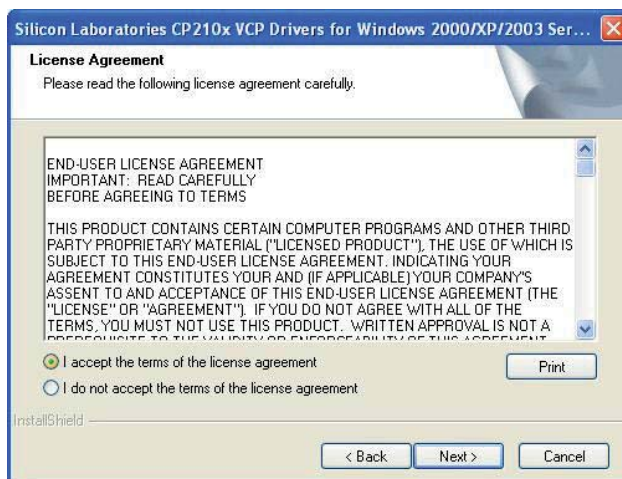
## INSTALLATION DES PILOTES USB

**REMARQUE : IL EST IMPÉRATIF D'INSTALLER LES PILOTES USB APRÈS UNE MISE À JOUR DE LA LANGUE. IL EST ÉGALEMENT INDISPENSABLE D'UTILISER CE PILOTE SI VOUS UTILISEZ LOGVIEW.**

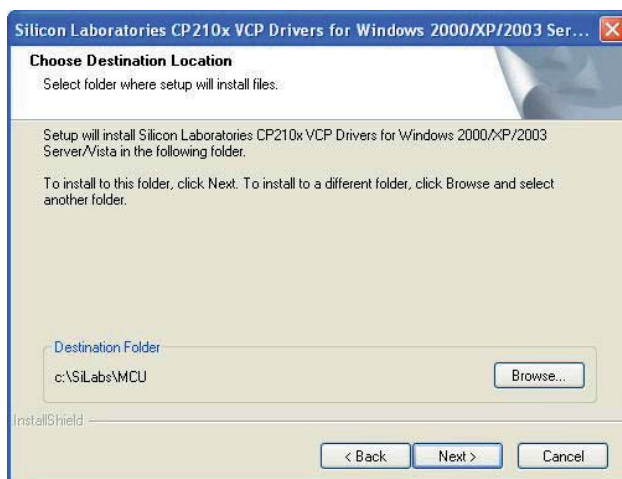
1. Ouvrez le classeur « PILOTES USB » se trouvant sur le CD puis démarrez le fichier « CP210x\_VCP\_Win2K\_XP\_S2K3.exe ». L'image suivante s'affiche à l'écran. Cliquez sur « SUIVANT ».



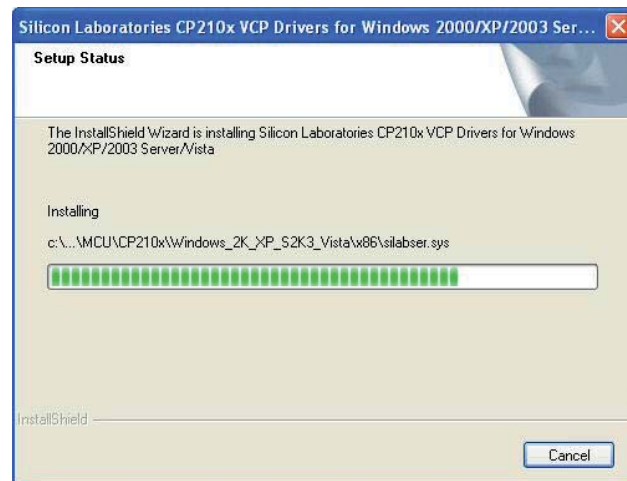
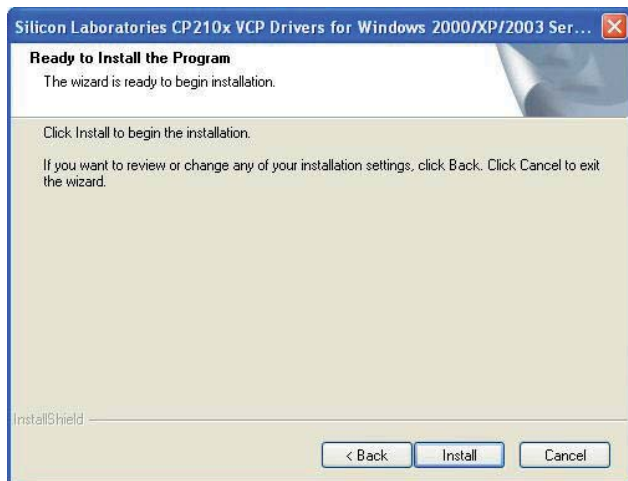
2. Sélectionnez « J'accepte les termes du contrat de licence », puis cliquez sur « NEXT ».



3. Cliquez sur « SUIVANT ».



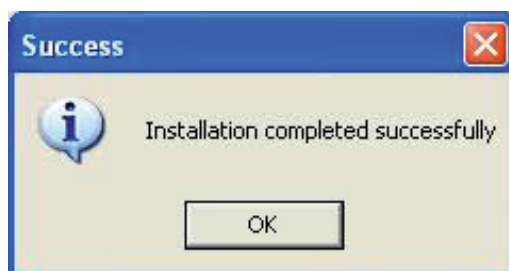
4. Cliquez sur « INSTALLER ».



5. L'installation des pilotes est terminée. Sélectionnez le champ « Lancer le programme d'installation des pilotes CP210x VCP », puis cliquez sur « TERMINER ».



6. Cliquez sur « INSTALLER ».



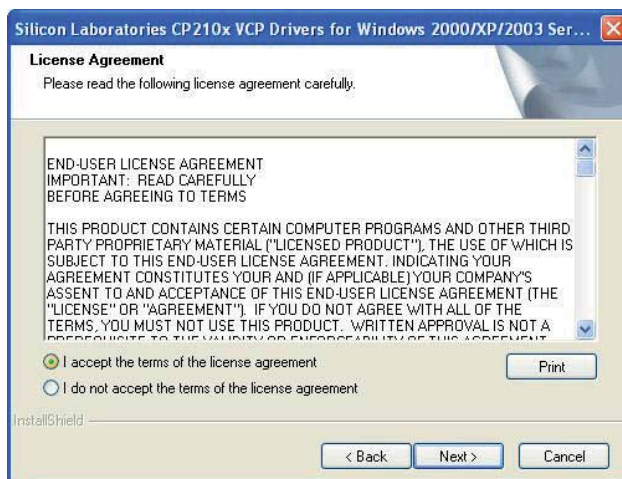
## INSTALLAZIONE DEL DRIVER USB

**Attenzione:** l'installazione del driver USB è assolutamente necessaria se deve essere effettuato un aggiornamento linguistico. In egual modo il presente driver è necessario per l'utilizzo di Logview.

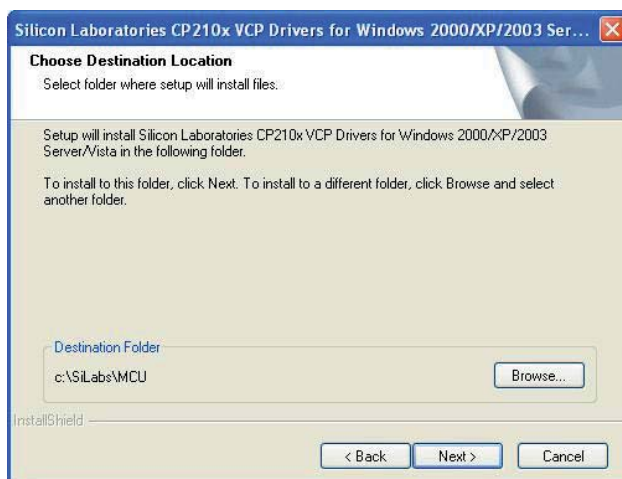
1. Aprire la cartella „USB DRIVER“ sul CD e avviare i comandi „CP210x\_VCP\_Win2K\_XP\_S2K3.exe“ La seguente immagine viene visualizzata. Cliccare su „NEXT“.



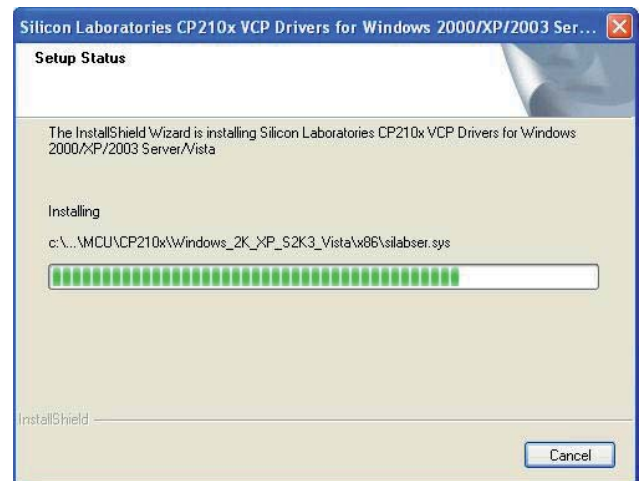
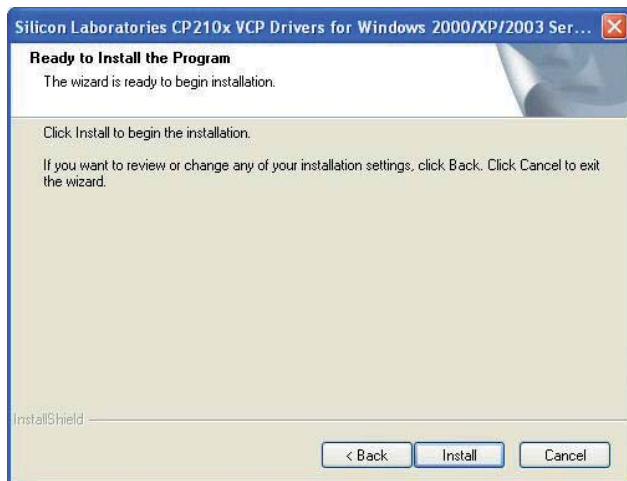
2. Scegliere „I accept the terms of the license agreement“ e cliccare su „NEXT“.



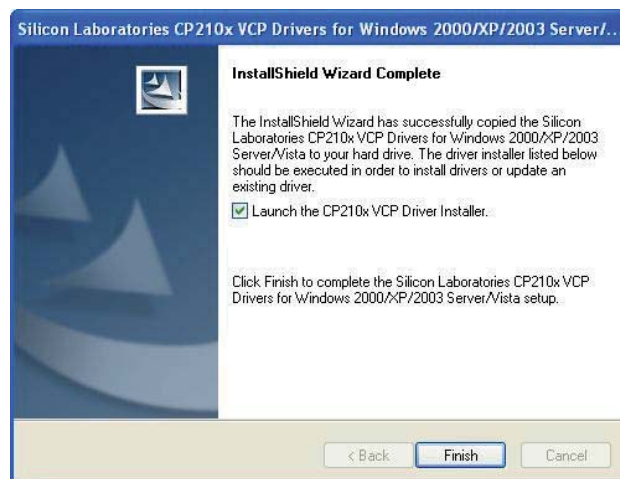
3. Cliccare su „NEXT“.



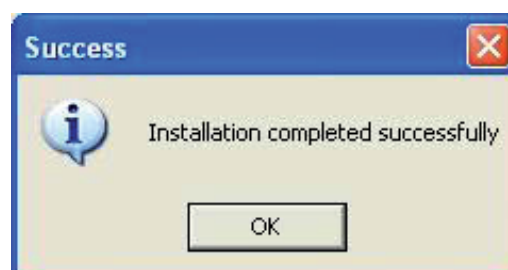
4. Cliccare su „INSTALL“.



5. L'installazione del driver è completata. Spuntare il campo „Launch the CP210x VCP Driver Installer“ e cliccare su „FINISH“.



6. cliccare su „INSTALL“.





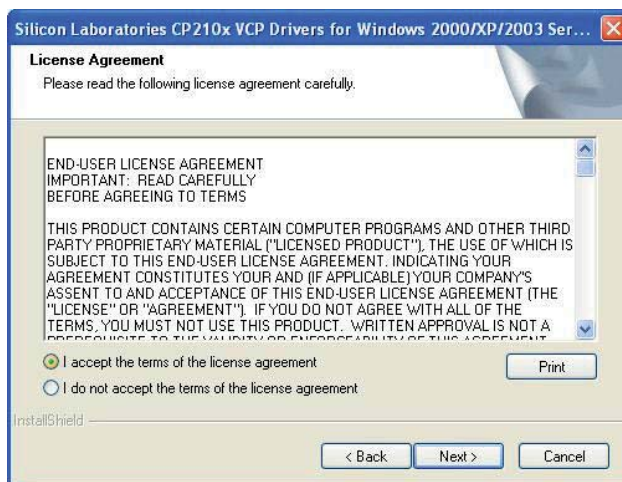
## INSTALACIÓN DEL CONTROLADOR USB

**Nota:** es indispensable instalar el controlador USB para poder realizar una actualización de idiomas. También es necesario este controlador para utilizar Logview.

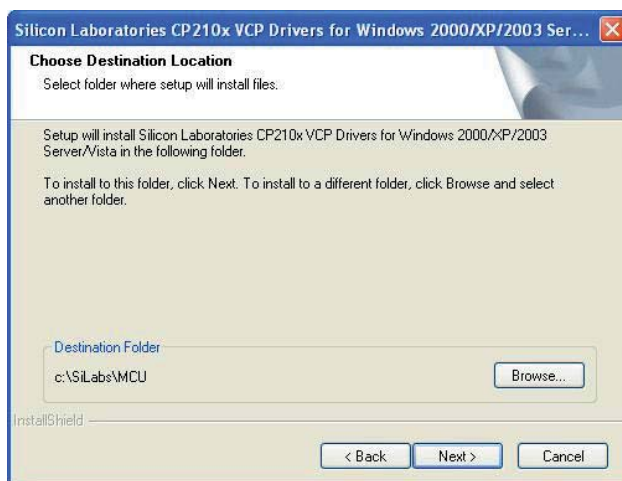
1. Abra la carpeta „USB DRIVER“ desde el CD e inicie el archivo „CP210x\_VCP\_Win2K\_XP\_S2K3.exe“. A continuación se abre la siguiente ventana. Pulse „NEXT“.



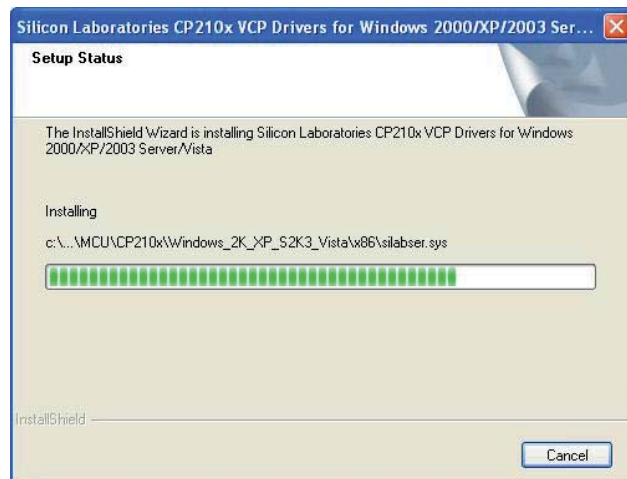
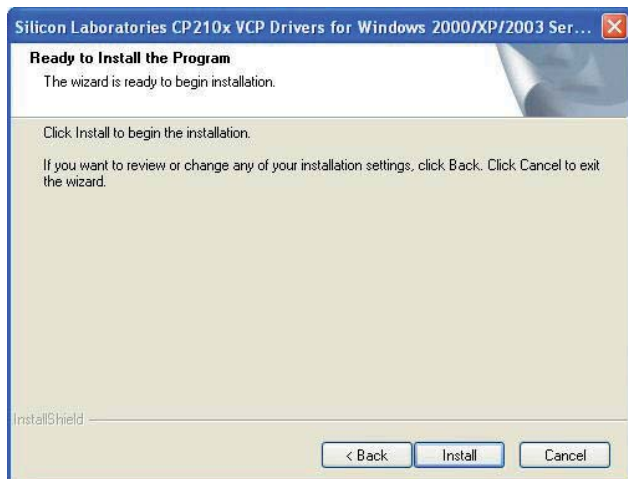
2. Seleccione „I accept the terms of the license agreement“ y pulse „NEXT“.



3. Pulse „NEXT“.



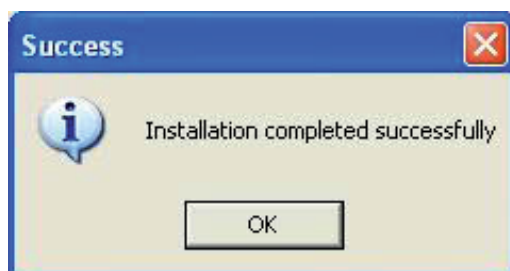
4. Pulse ahora „INSTALL“.



5. La instalación del controlador ha terminado. Seleccione el campo „Launch the CP210x VCP Driver Installer“ y pulse „FINISH“.



6. Pulse „INSTALL“.



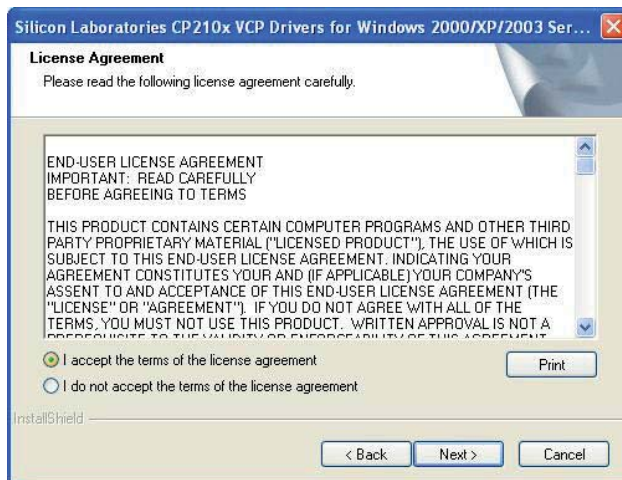
## INSTALACE OVLADAČE USB

**Upozornění: Instalace ovladače USB je bezpodmínečně nutná, pokud se má provést update jazyka. Rovněž je tento ovladač nutný při používání Logview.**

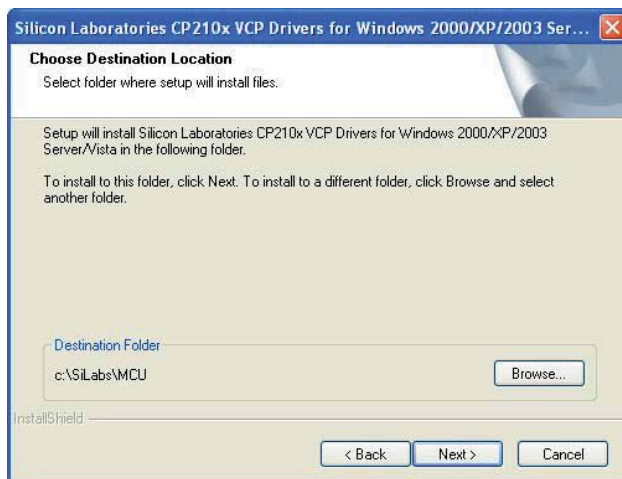
1. Otevřete složku „USB DRIVER“ na CD a spusťte soubor „CP210x\_VCP\_Win2K\_XP\_S2K3.exe“  
Zobrazí se následující obrázek. Stiskněte „NEXT“.



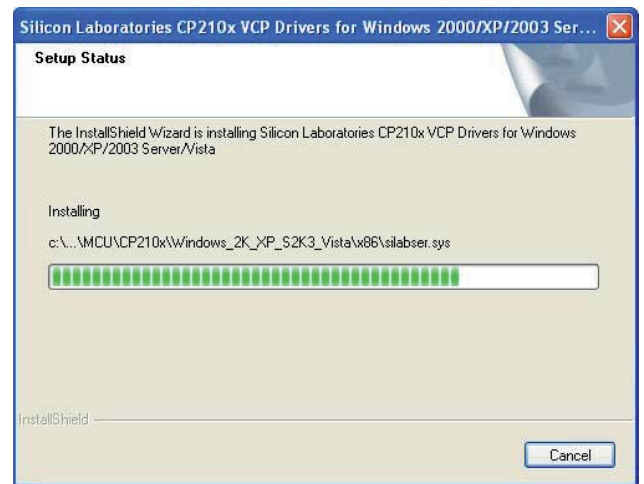
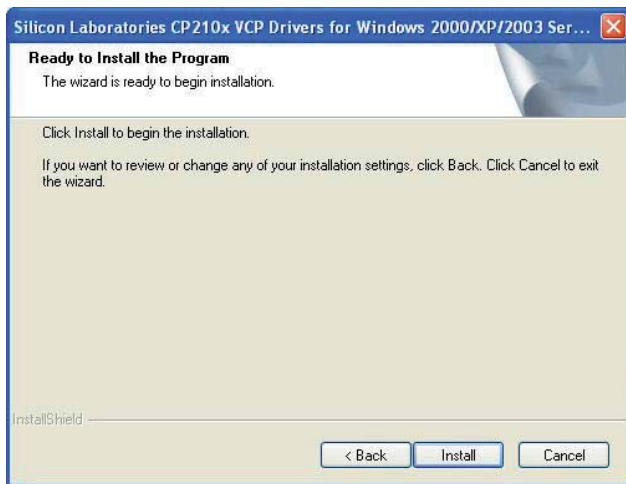
2. Vyberte „I accept the terms of the license agreement“ a klikněte na „NEXT“.



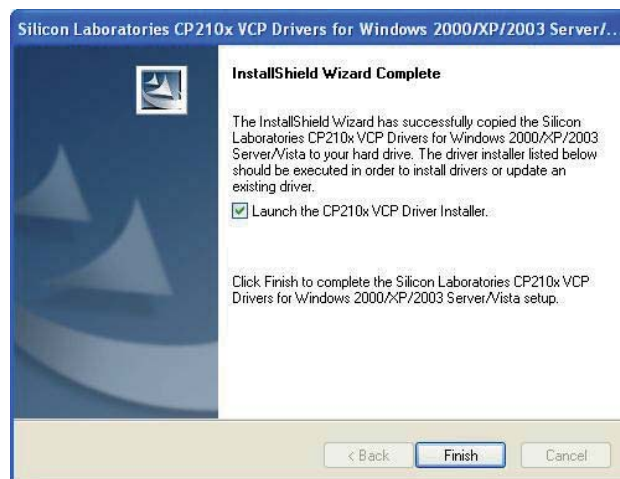
3. Stiskněte „NEXT“.



4. Stiskněte „INSTALL“.



5. Instalace ovladače je ukončena. Vyberte políčko „Launch the CP210x VCP Driver Installer“ a klikněte na „FINISH“.



6. Stiskněte „INSTALL“.

